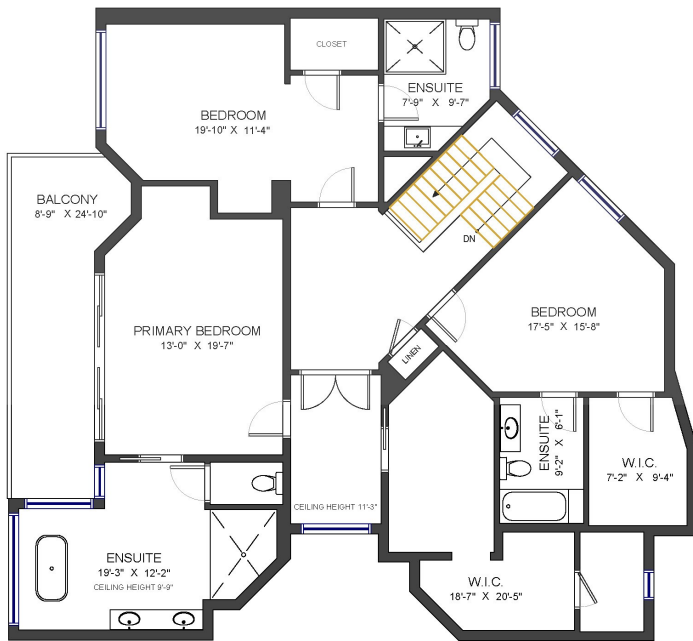


6215 Overstone Drive
West Vancouver, BC

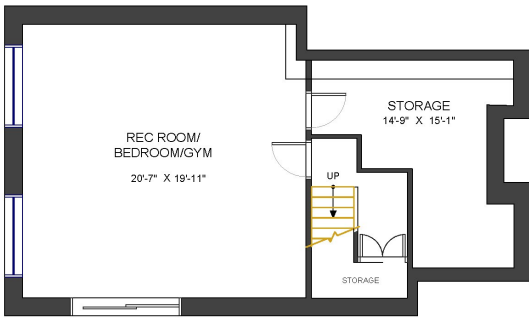
EVERY HOME DEMANDS
ITS OWN STRATEGY ...
THAT'S THE POINT

LIVING AREA	5,235 SF
MAIN FLOOR	2,704 SF
UPPER FLOOR	1,750 SF
LOWER FLOOR	781 SF

AUXILIARY AREA	1,507 SF
BALCONY	173 SF
PATIO	552 SF
DECK	223 SF
GARAGE	513 SF
UTILITY ROOM	46 SF



Upper Floor
Ceiling Height: 9'-6"



Lower Floor
Ceiling Height: 8'



Main Floor
Ceiling Height: 9'



All dimensions are approximate and not suitable for architectural/construction use.
This is for marketing purposes only. The measurements are approximate within +/- 2%. E&O insured.
Total square footage might be kept consistent with strata plan. It might include unfinished area.
We have no guarantee or warranty of the degree of room titles. Area is calculated per ANSI Z765-2003 method.