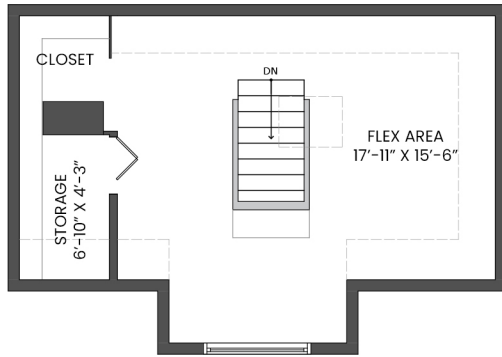
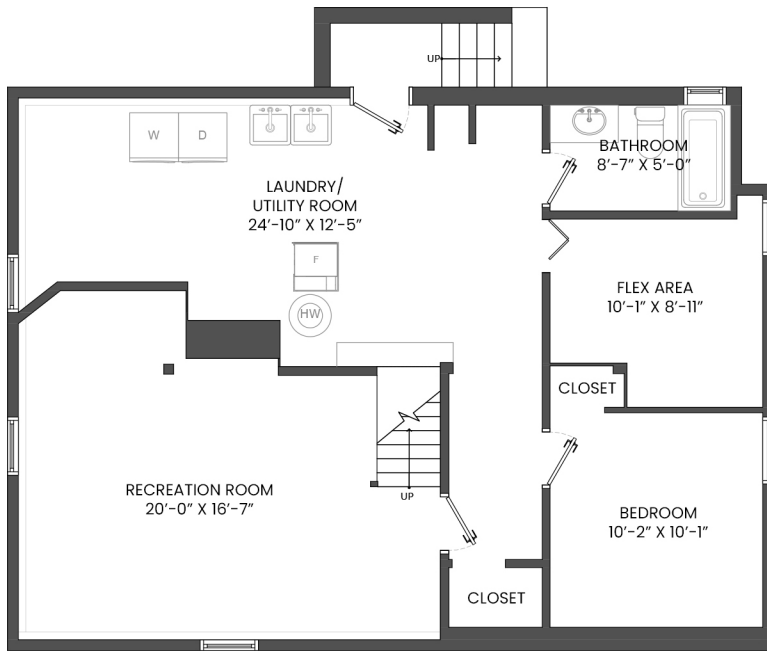


1531 INGLEWOOD AVENUE, WEST VANCOUVER, BC

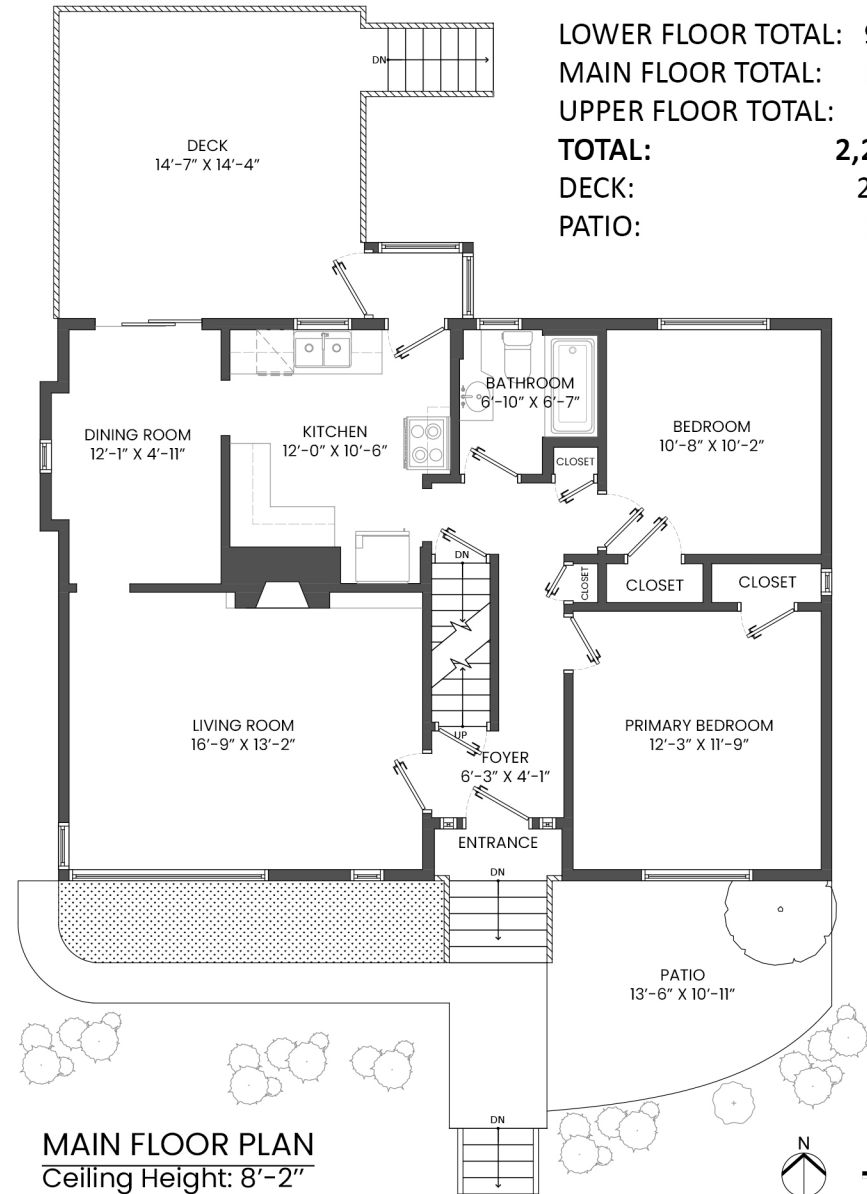
LOWER FLOOR TOTAL: 965 SQ.FT.
 MAIN FLOOR TOTAL: 984 SQ.FT.
 UPPER FLOOR TOTAL: 323 SQ.FT.
TOTAL: 2,272 SQ.FT.
 DECK: 209 SQ. FT.
 PATIO: 126 SQ. FT.



UPPER FLOOR PLAN
 SLOPED CEILING HEIGHT
 FROM 7'-5" TO 4'-0"



LOWER FLOOR PLAN
 Ceiling Height: 6'-6"



MAIN FLOOR PLAN
 Ceiling Height: 8'-2"



John Jennings

604-790-1900

John@JohnJennings.com

JohnJennings.com

