

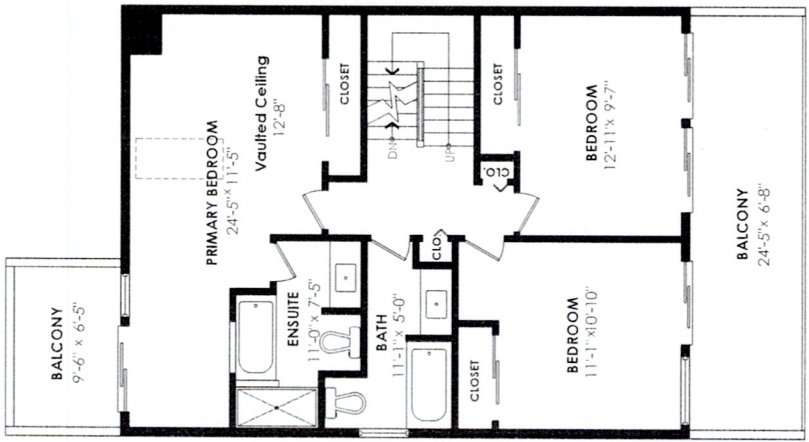
25-4957 Marine Drive, West Vancouver



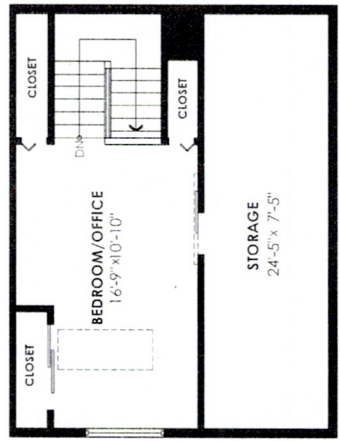
Main Floor: 1,142 sq. ft. Porch: 30 sq. ft.
 2nd Floor: 860 sq. ft. Patios: 443 sq. ft.
 Upper Floor: 495 sq. ft. Balconies: 245 sq. ft.
Total Livable: 2,497 sq. ft. Total Extras: 718 sq. ft.



2nd Floor Plan
 Floor Area: 860 sq. ft.
 Ceiling Height: 8'-1" - 12'-8"



Upper Floor Plan
 Floor Area: 495 sq. ft.
 Ceiling Height: 7'



Floor plan is for marketing purposes only. Not intended for architectural or construction use. Sizes and dimensions are approximate, actual may vary. All information provided within +/- 2% tolerance.