

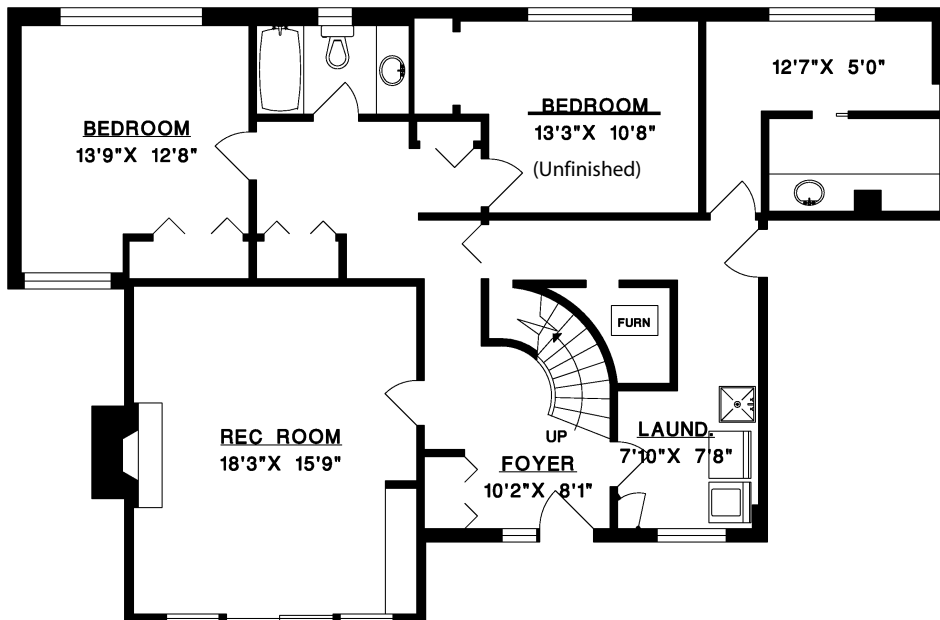
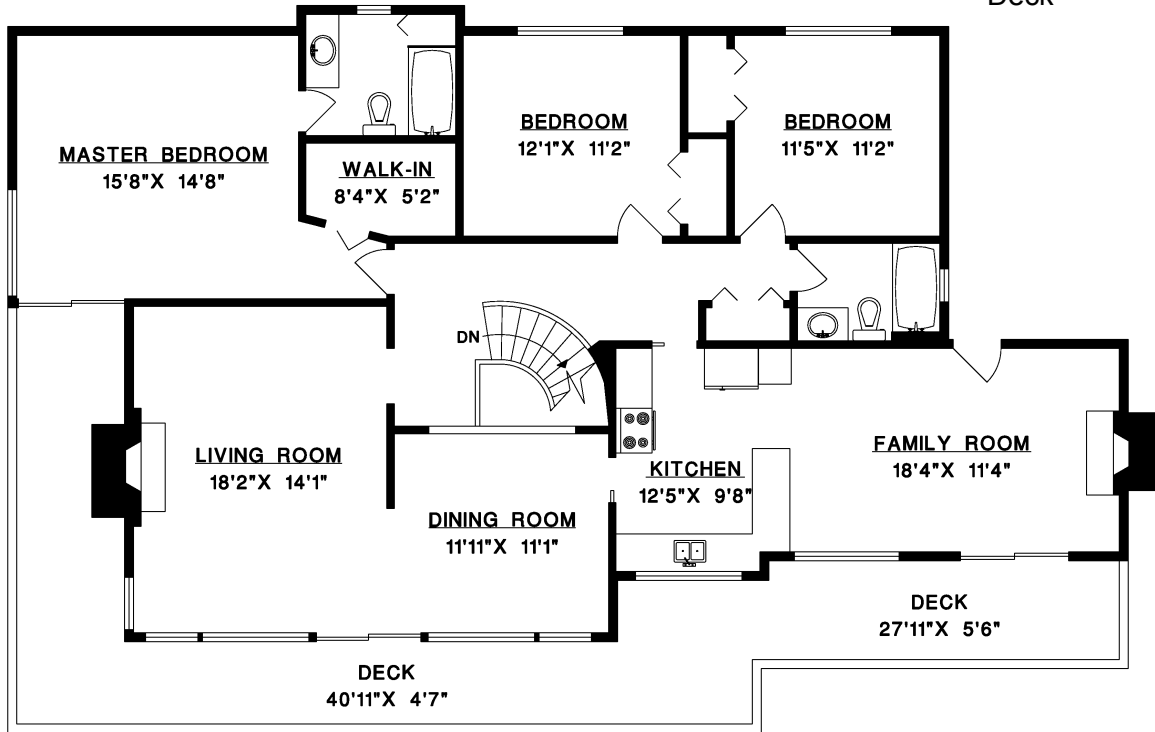
RAY AND LYND A PROC

www.proc.ca

3105 Benbow Road West Vancouver

Main Floor	1,733 sq. ft.
Lower Floor	1,361 sq. ft.
TOTAL	3,094 sq. ft.

Deck	204 sq. ft.
------	-------------



1' 6'
SCALE

LOWER FLOOR