

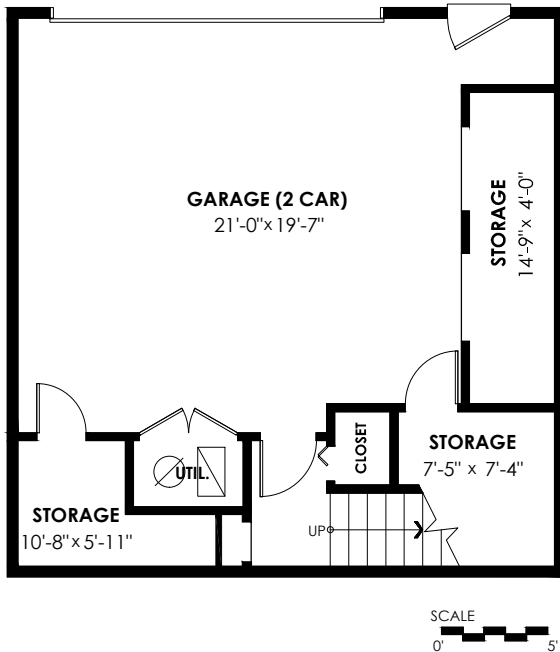
2485 Folkestone Way, West Vancouver

Garage Floor: 64sq. ft.
Below Floor: 815sq. ft.
Main Floor: 1,132sq. ft.
Total Livable: 2,011 sq. ft.

Storage: 316 sq. ft.
Balcony: 278 sq. ft.
Patio: 188 sq. ft.
Garage: 427 sq. ft.

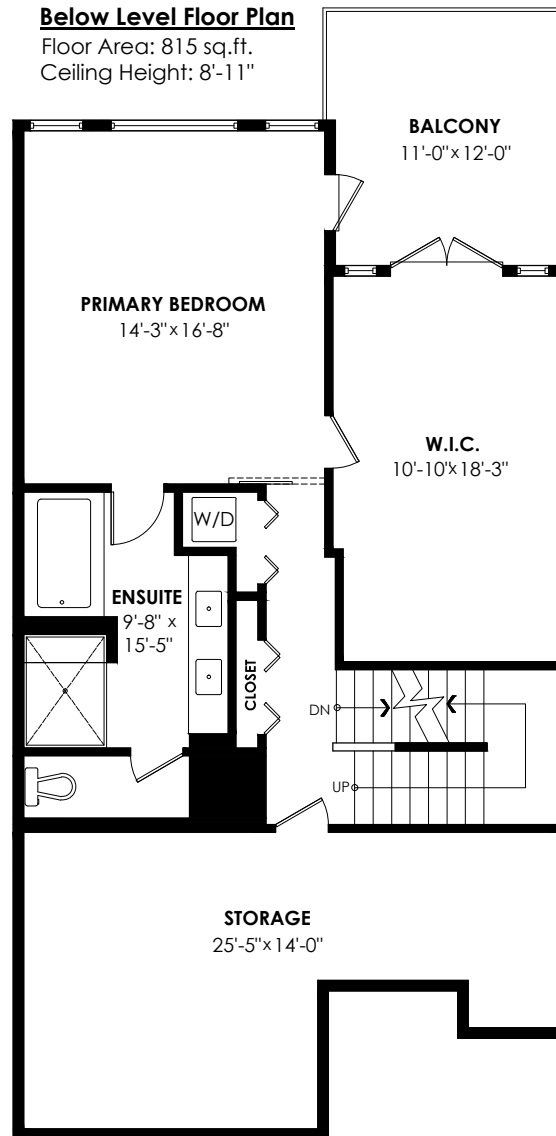
Garage/Basement Level Floor Plan

Floor Area: 64 sq.ft.
Ceiling Height: 9'-5"



Below Level Floor Plan

Floor Area: 815 sq.ft.
Ceiling Height: 8'-11"



Main Level Floor Plan

Floor Area: 1132 sq.ft.
Ceiling Height: 8'-11" - 9'-10"

