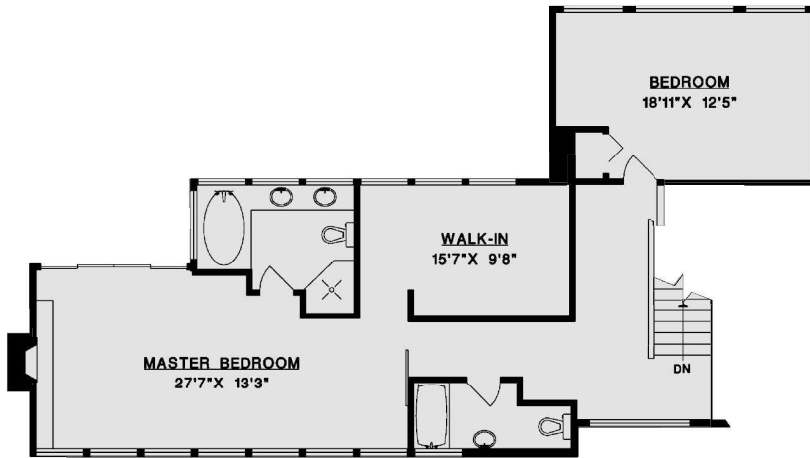


6072 Eagleridge Drive

Designed by Lewis Morse

Built in 2005



Upper Floor

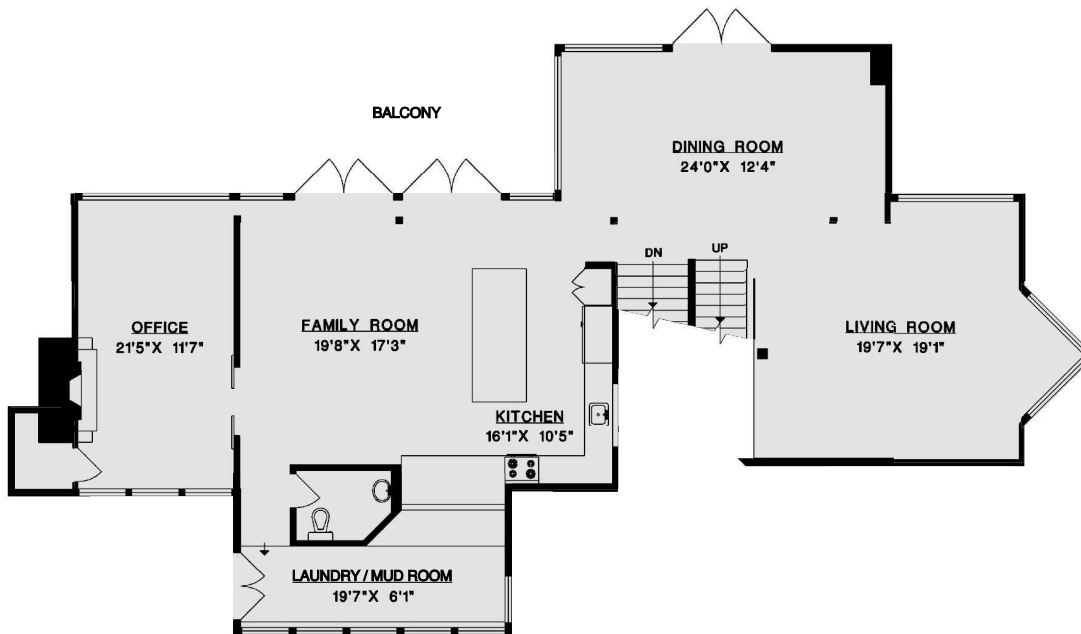
upper floor 1,250 sqft
main floor 2,055 sqft
lower floor 1,176 sqft

total 4,481 sqft

balcony 275+ sqft
garage 390 sqft

lot 12,141 sqft

bed 4
bath 3.5



Main Floor

N

1' 2' 5' SCALE



Lower Floor