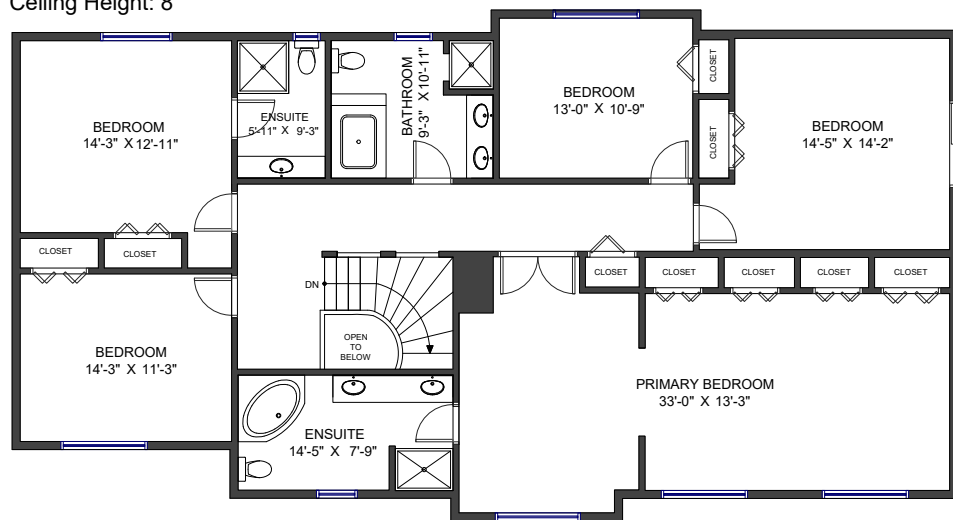
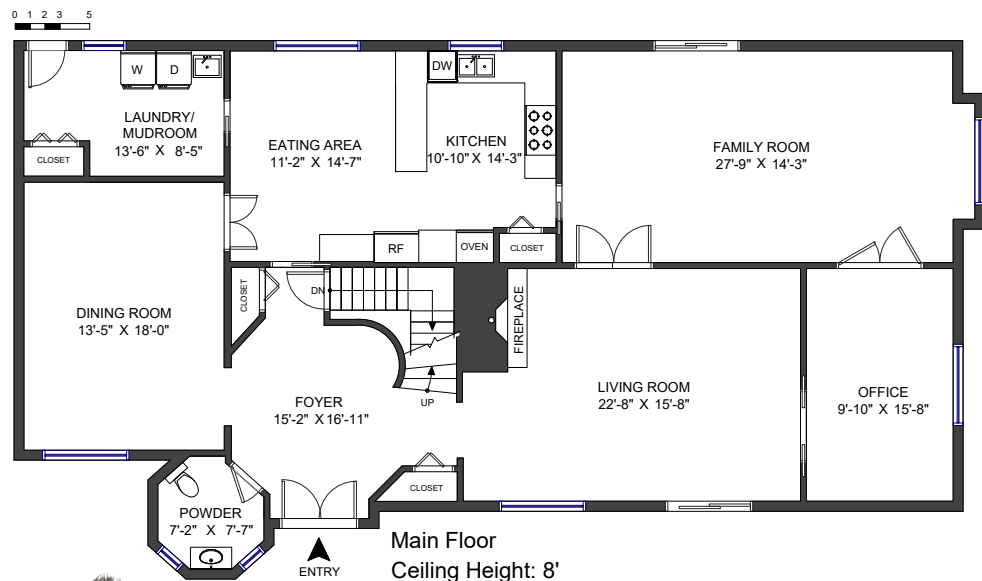


Upper Floor  
Ceiling Height: 8'

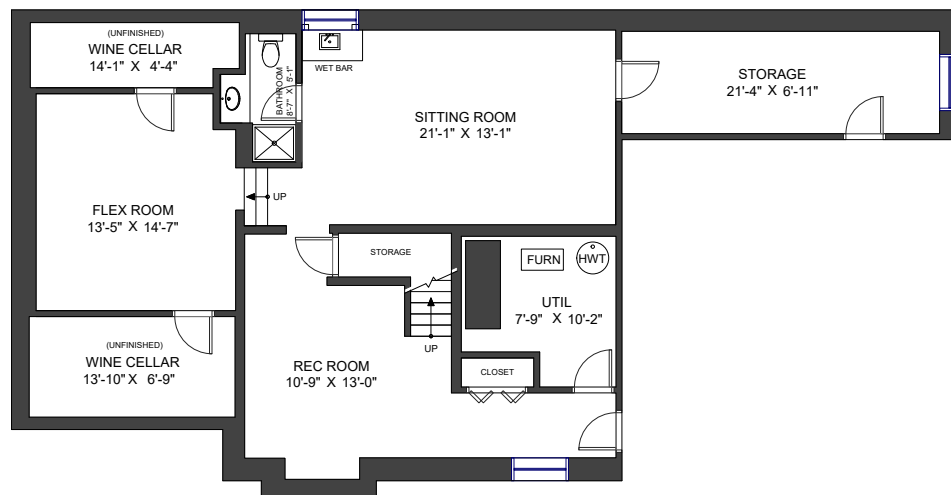


2362 Westhill Drive  
West Vancouver, BC

MAIN FLOOR	2,066 SF
UPPER FLOOR	1,991 SF
LOWER FLOOR	1,278 SF
LIVING AREA	5,335 SF
UNFINISHED AREA	192 SF
LIVING AREA	5,527 SF



Lower Floor  
Ceiling Height: 8'



Valid Until: June 24, 2024



All dimensions are approximate and not suitable for architectural/construction use. This is for marketing purposes only. The measurements are approximate within +/- 2%, E&O insured. Total square footage might be kept consistent with strata plan. It might include unfinished area.

**UPLAN.CO**  
BUILD UP YOUR PLAN

**360**hometours.ca  
since 2006

EVERY HOME DEMANDS  
ITS OWN STRATEGY ...  
THAT'S THE POINT

**THE PARTNERS**  
Derek Grech  
REAL ESTATE

ThePartnersVancouver.com  
604.833.4862