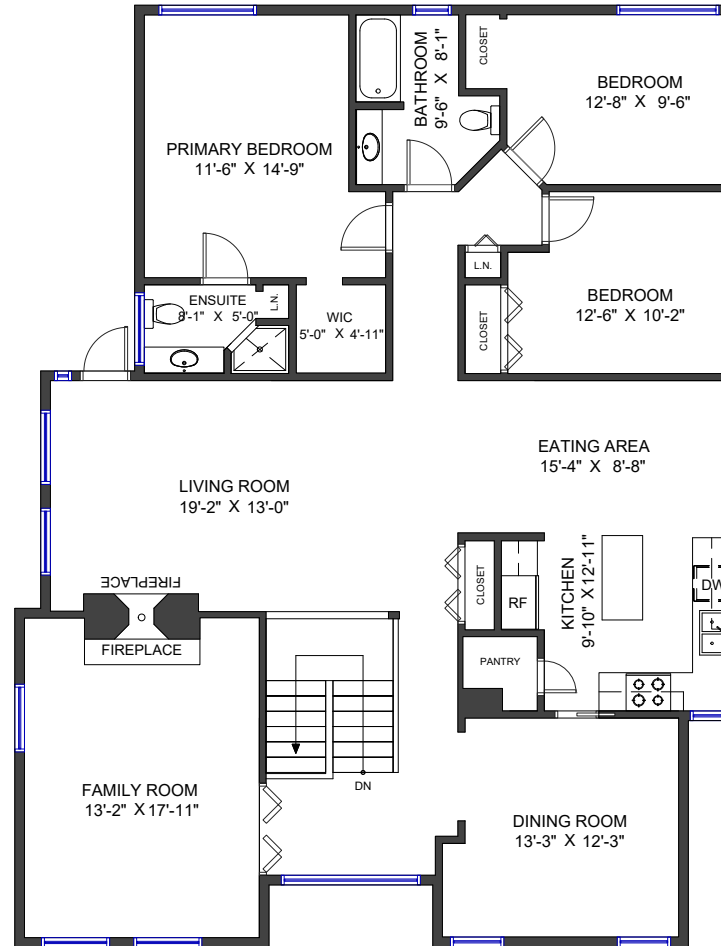
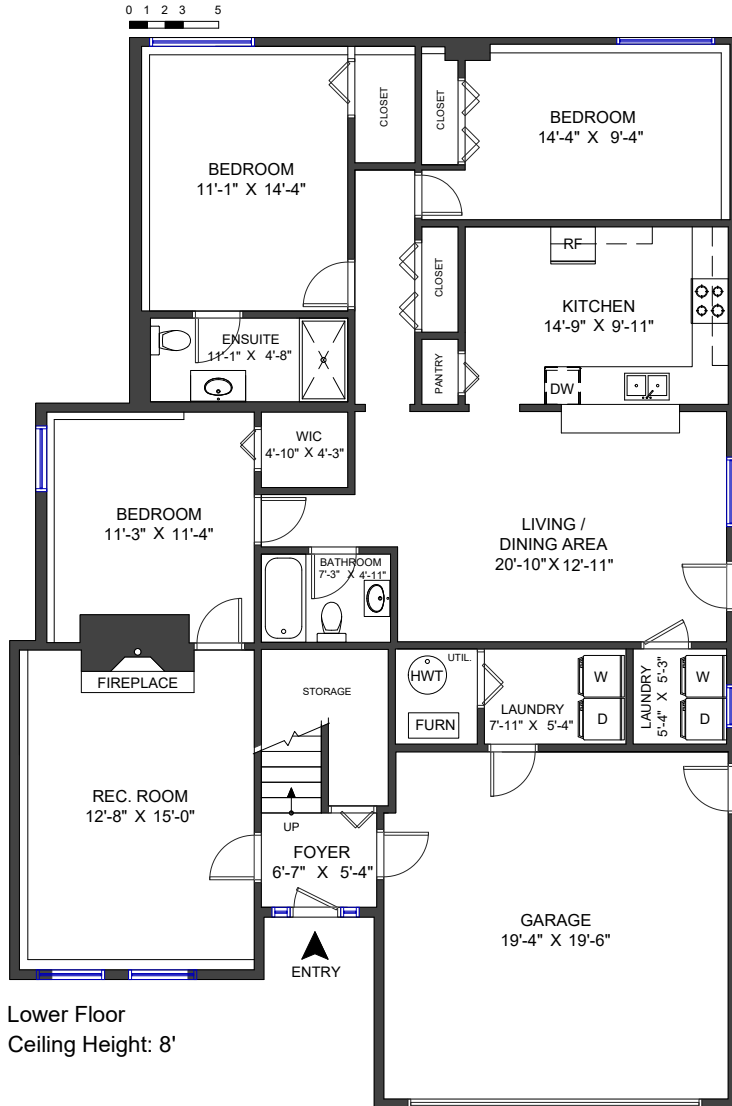


706 E 26th Street North Vancouver, BC

LIVING AREA	3,570 SF
MAIN FLOOR	1,924 SF
LOWER FLOOR	1,646 SF



EVERY HOME DEMANDS
ITS OWN STRATEGY ...
THAT'S THE POINT



Valid Until: May 23, 2024

All dimensions are approximate and not suitable for architectural/construction use.
This is for marketing purposes only. The measurements are approximate within +/- 2%, E&O insured.
Total square footage might be kept consistent with strata plan. It might include unfinished area.



ThePartnersVancouver.com
604.833.4862