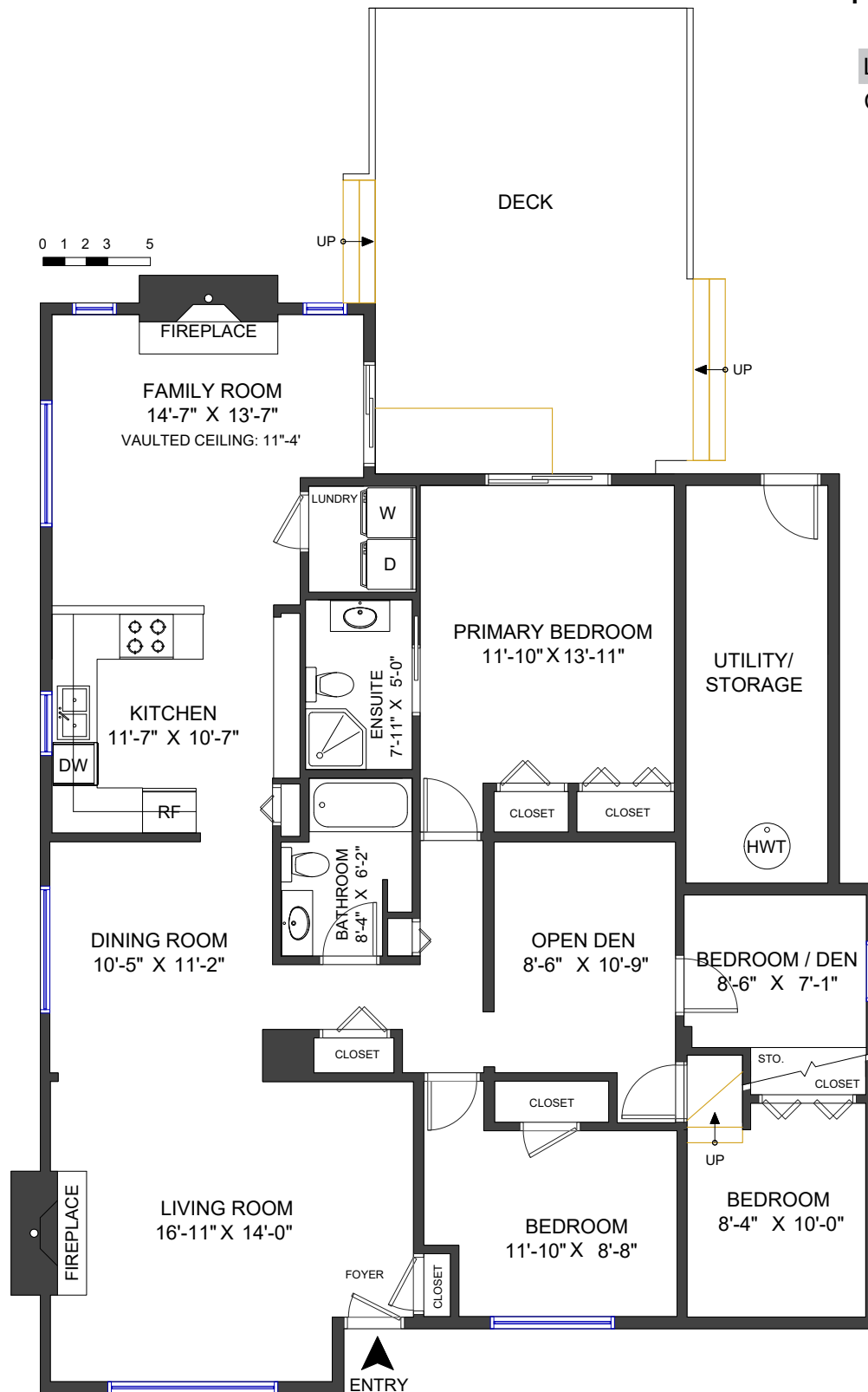


1446 Woods Drive
North Vancouver, BC

LIVING AREA 1,556 SF
CEILING HEIGHT 8'



Valid Until: April 8, 2024

All dimensions are approximate and not suitable for architectural/construction use.
This is for marketing purposes only. The measurements are approximate within +/- 2%, E&O insured.
Total square footage might be kept consistent with strata plan. It might include unfinished area.

UPLAN.CO
BUILD UP YOUR PLAN

360 hometours.ca
since 2006

EVERY HOME DEMANDS
ITS OWN STRATEGY ...
THAT'S THE POINT

THE PARTNERS
Derek Green
REAL ESTATE

ThePartnersVancouver.com
604.833.4862