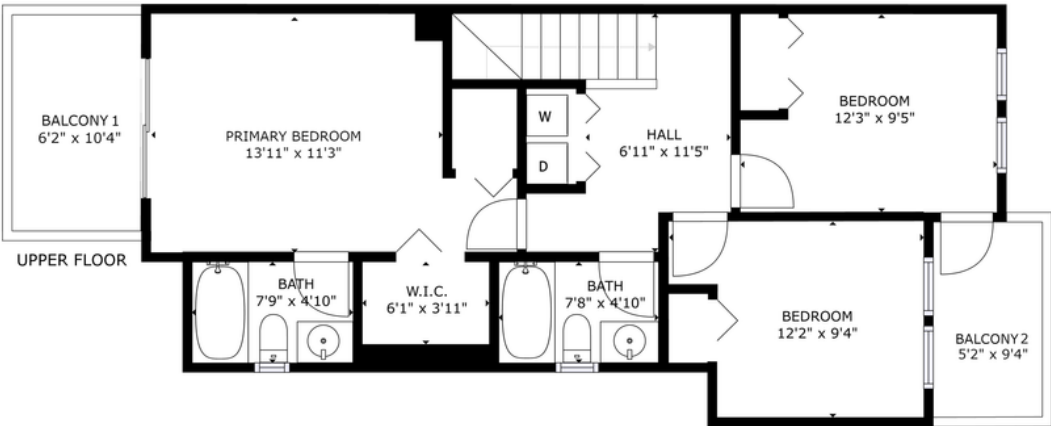
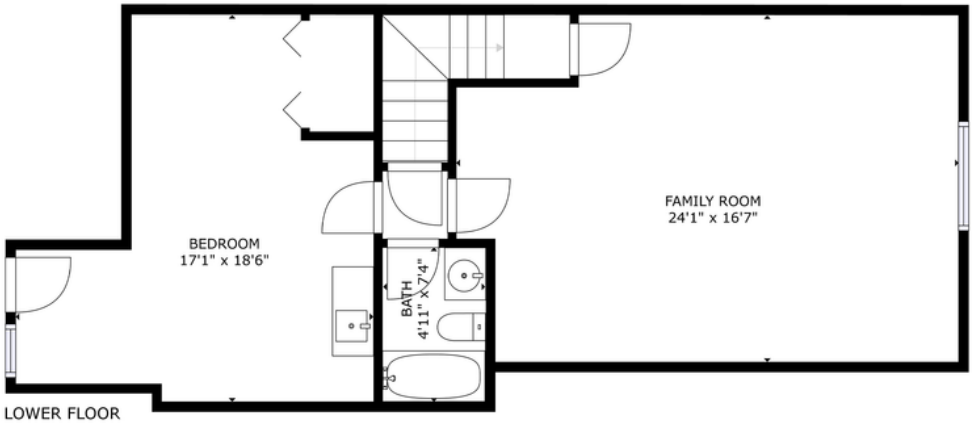
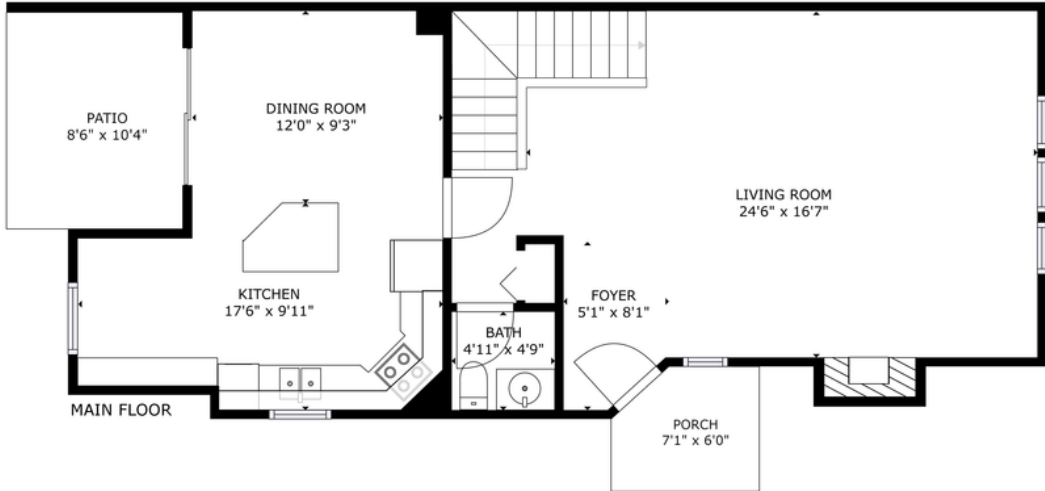


# 6353 Douglas Street

West Vancouver



Main Floor:	855 sq. ft
Lower Floor:	792 sq. ft
Upper Floor:	748 sq. ft
<b>TOTAL:</b>	<b>2395 sq. ft</b>
Patio:	88 sq. ft
Balcony:	60 sq. ft
Balcony:	50 sq. ft
Porch:	39 sq. ft



SIZES AND DIMENSIONS ARE APPROXIMATE. ACTUAL MAY VARY