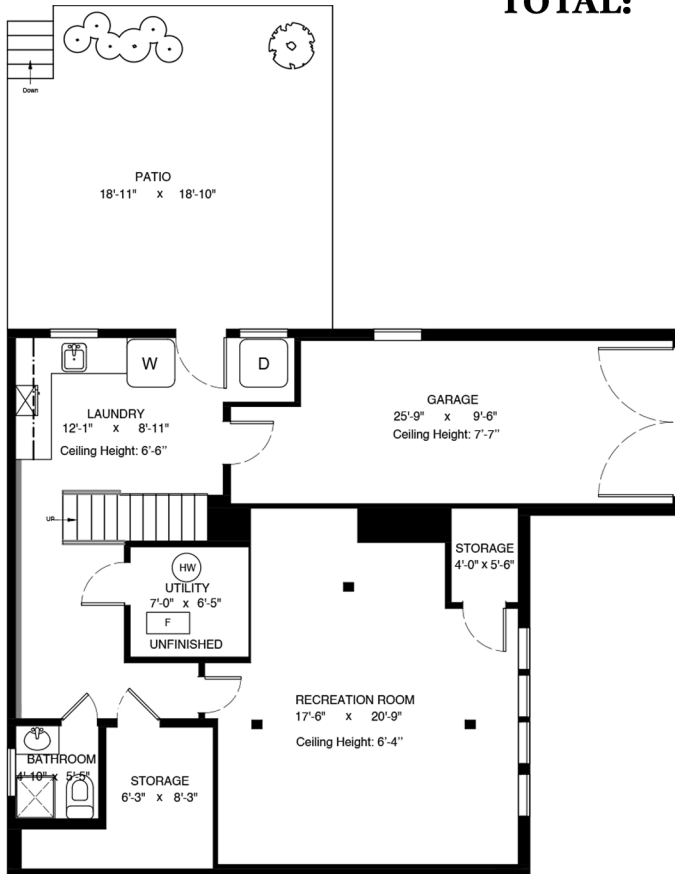
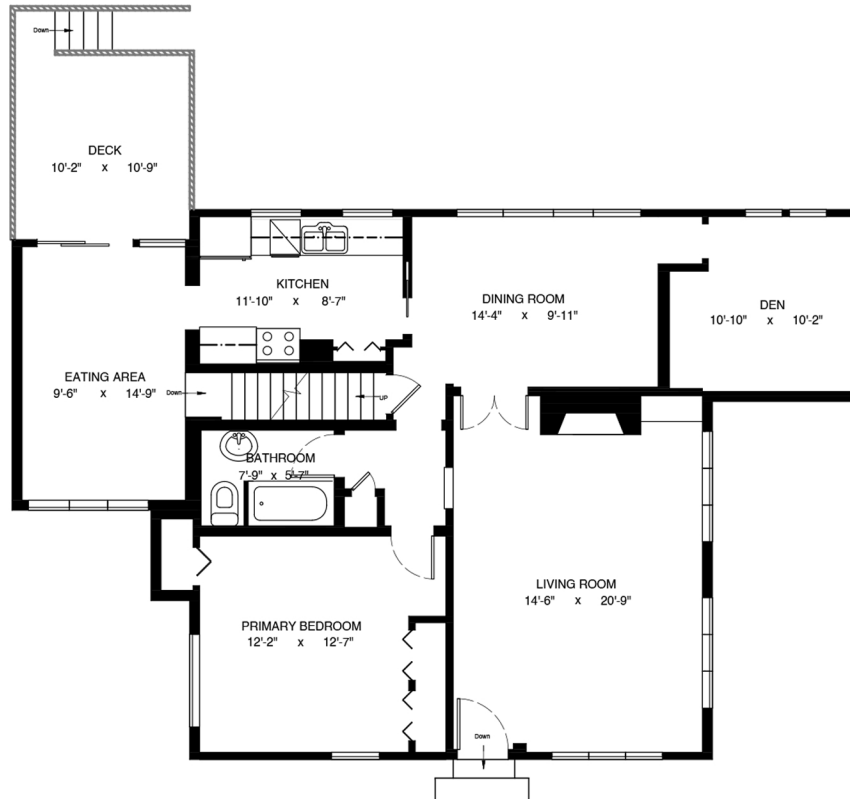


2692 NELSON AVENUE, WEST VANCOUVER, BC

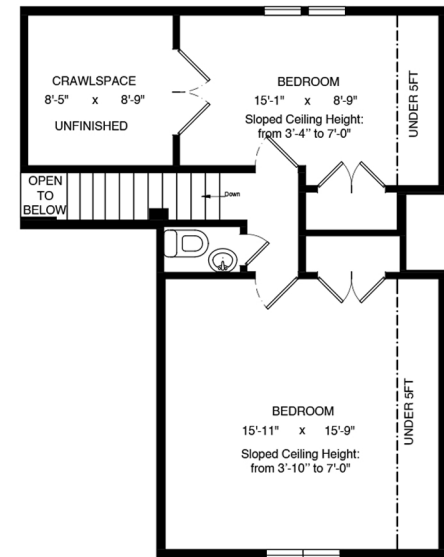
LOWER FLOOR TOTAL: 809 SQ.FT. PATIO: 345 SQ. FT.
 MAIN FLOOR TOTAL: 1,247 SQ.FT. GARAGE: 253 SQ. FT.
 UPPER FLOOR TOTAL: 433 SQ.FT. DECK: 115 SQ. FT.
TOTAL: 2,489 SQ.FT. CRAWL SPACE: 86 SQ. FT.



LOWER FLOOR PLAN
 Ceiling Height: 6'-6"



MAIN FLOOR PLAN
 Ceiling Height: 8'-0"



UPPER FLOOR PLAN
 Ceiling Height: 7'-0"



Sotheby's
 INTERNATIONAL REALTY
 Canada

Kyla Gardiner
 Sales Associate
 604.307.0441
 kyla@iloveheritage.com

floor plan designed by
 ishot.ca Enterprises Inc.
 604-368-7979
 http://ishot.ca