

#59-15235 Sitka Drive,  
Surrey, B.C.

Main Floor:	1,139 sq.ft.
Lower Floor:	683 sq.ft.
<b>Total:</b>	<b>1,822 sq.ft.</b>

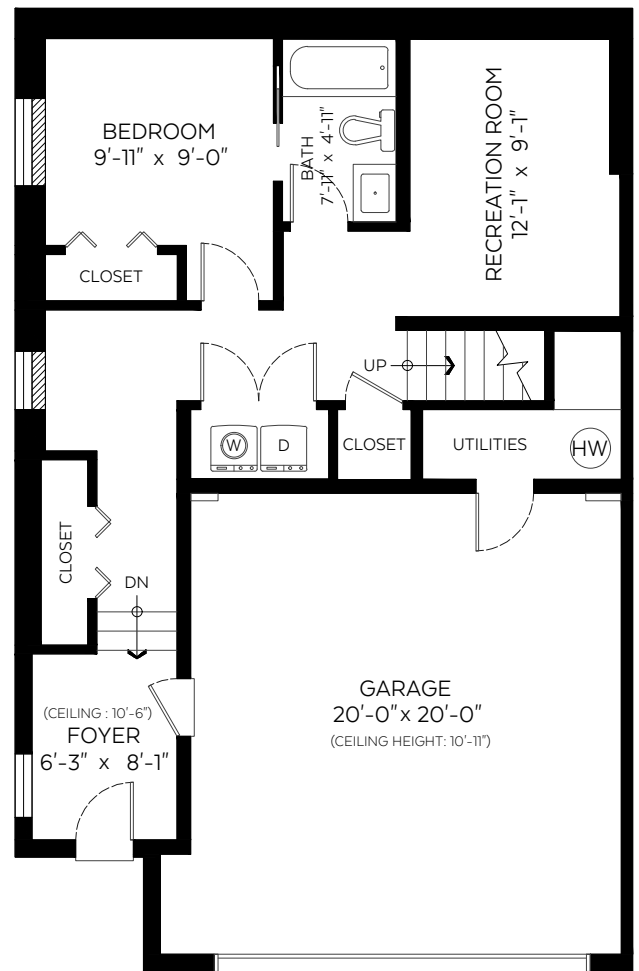
#### Auxiliary Area

Garage:	408 sq.ft.
Yard/Patio:	463 sq.ft.



#### Main Floor Plan

Floor Area: 1,139 sq.ft.  
Ceiling Height: 9 ft.



#### Lower Floor Plan

Floor Area: 683 sq.ft.  
Ceiling Height: 9 ft.

SCALE  
0' 5'

Valid Until: April 26, 2023

The floor plan is not suitable for architectural/construction and is covered under E&O. © Excelsior Measuring Inc. 2022. All rights reserved for Excelsior Measuring Inc. Users shall not publish and distribute such material (in whole or in part) and/or incorporate it in other works in any form.

**360**hometours.ca  
since 2006



**THE PARTNERS**  
Derek Grech  
REAL ESTATE



ThePartnersVancouver.com  
604.833.4862

EVERY HOME DEMANDS  
ITS OWN STRATEGY ...  
THAT'S THE POINT ■

