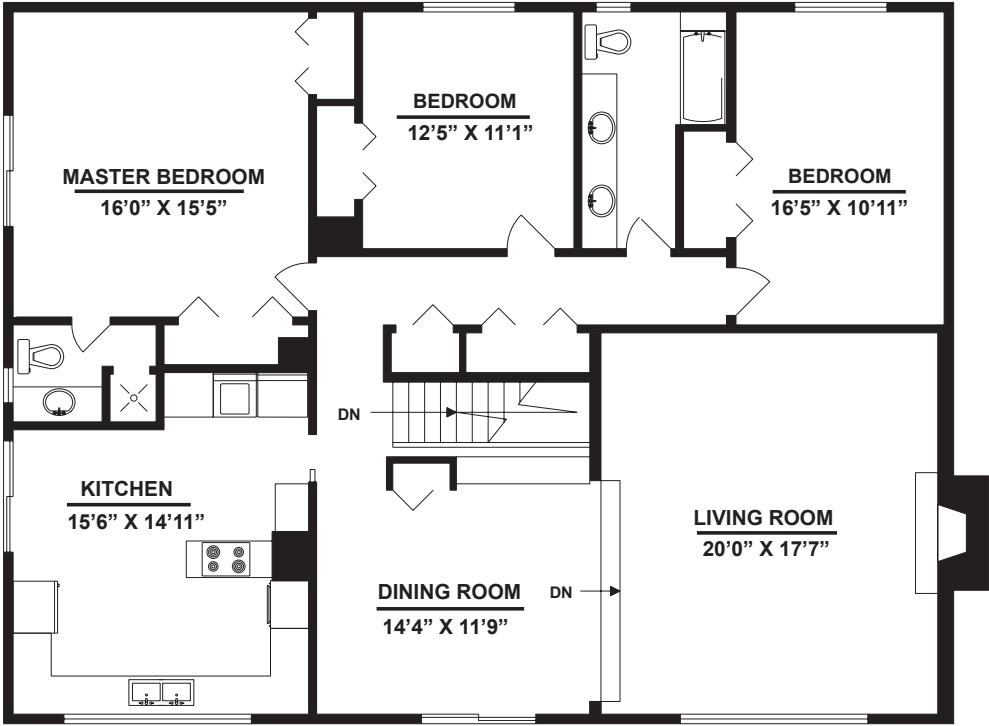


1885 Fulton Avenue

Ambleside, West Vancouver



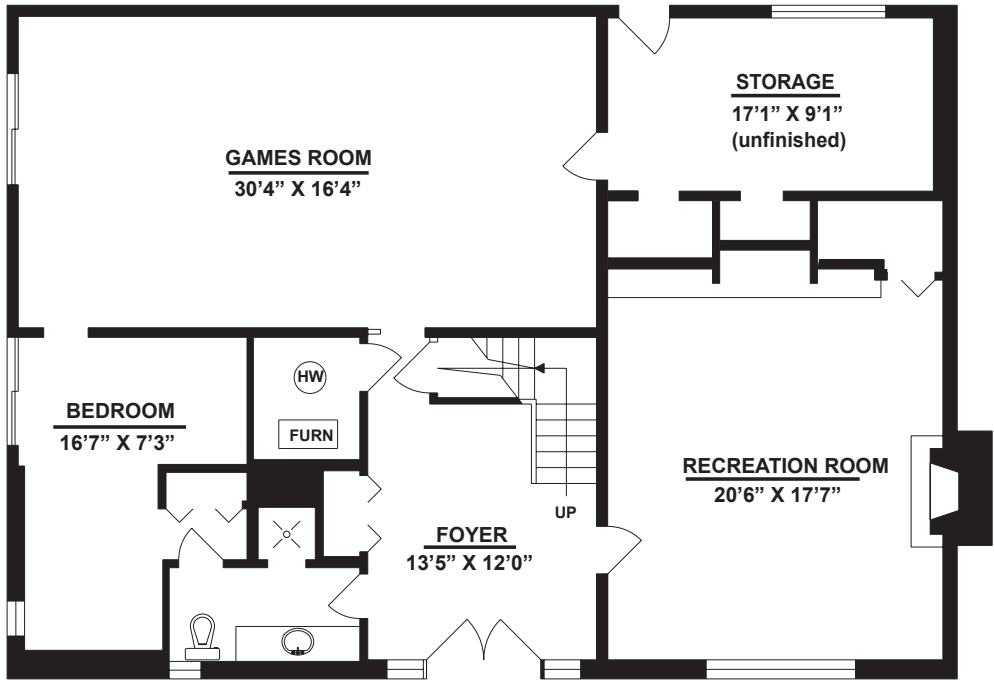
Ground Floor*	1,762 sq. ft.
Upper Floor	1,886 sq. ft.
TOTAL	3,648 sq. ft.

* Includes 212 sq. ft. of Unfinished Area

UPPER FLOOR

RAY AND LYNDA PROC

www.proc.ca



GROUND FLOOR

