

432 NORTH DOLLARTON HIGHWAY

NORTH VANCOUVER, BC

MAIN 1,342 SQ.FT.

LOWER 843 SQ.FT.

TOTAL 2,185 SQ.FT.

UNFINISHED 223 SQ.FT.

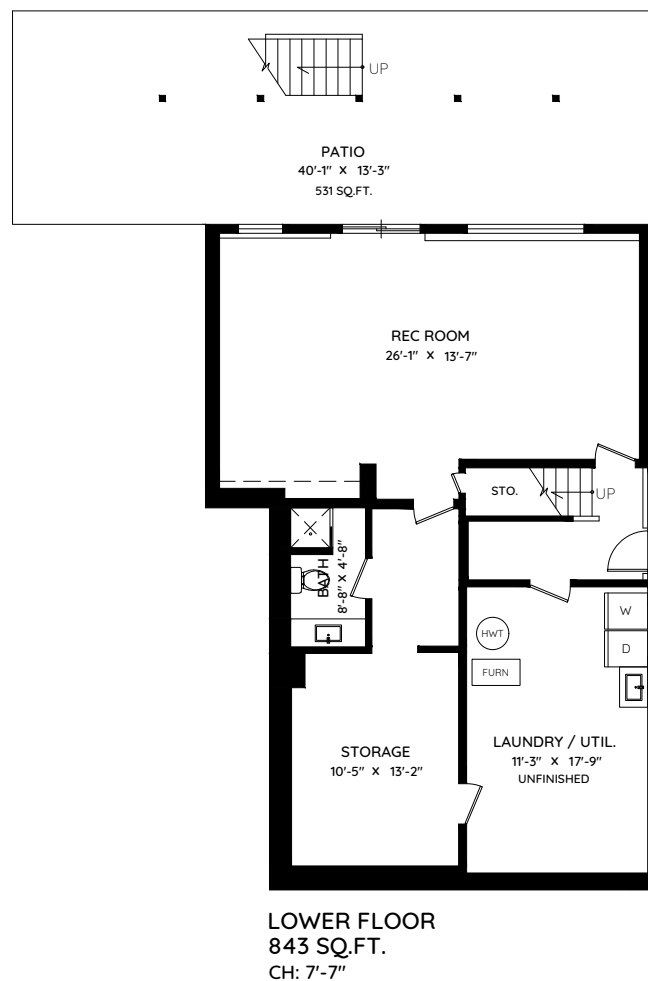
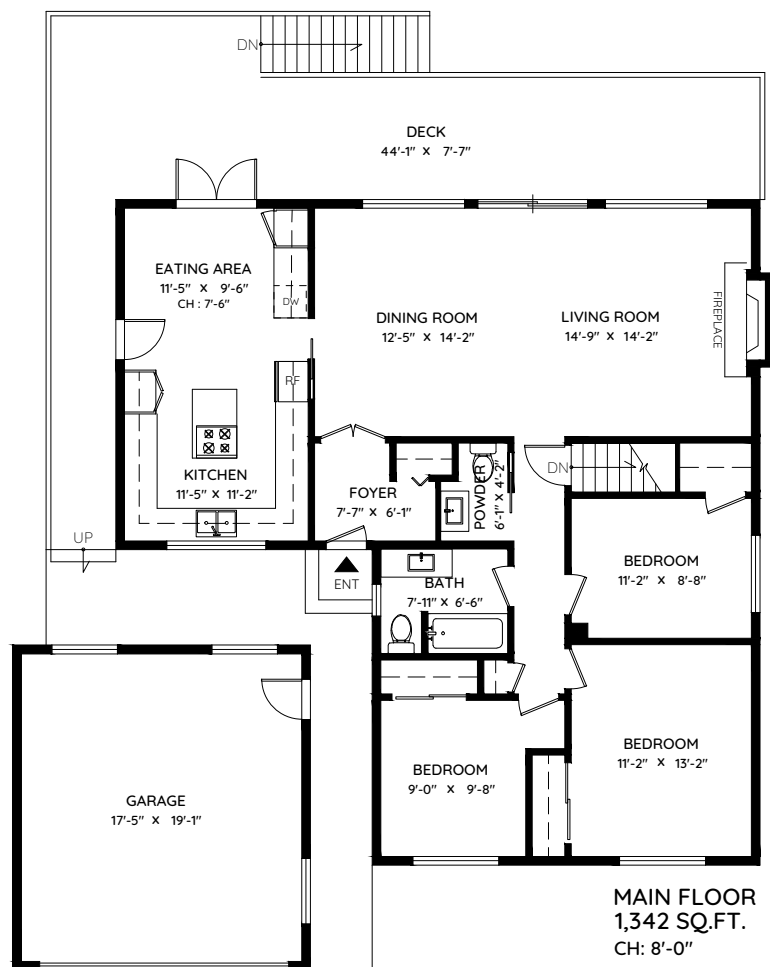
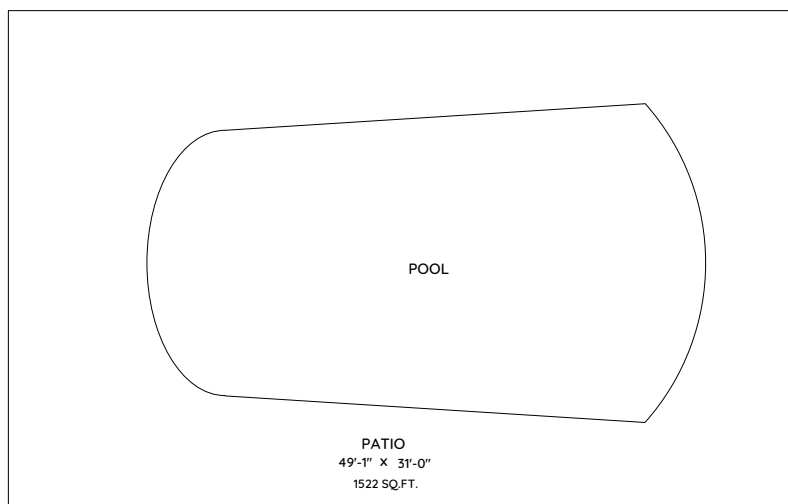
TOTAL AREA 2,408 SQ.FT.

GARAGE 373 SQ.FT.

DECK 540 SQ.FT.

PATIO 2053 SQ.FT.

TOTAL 2,966 SQ.FT.



0 ft 3 ft 5 ft 10 ft

The floor plan and the measurements are approximate within +/- 2% and are to be used for advertising usage only. May include unfinished area. Not suitable for architectural or construction. E&O Insured