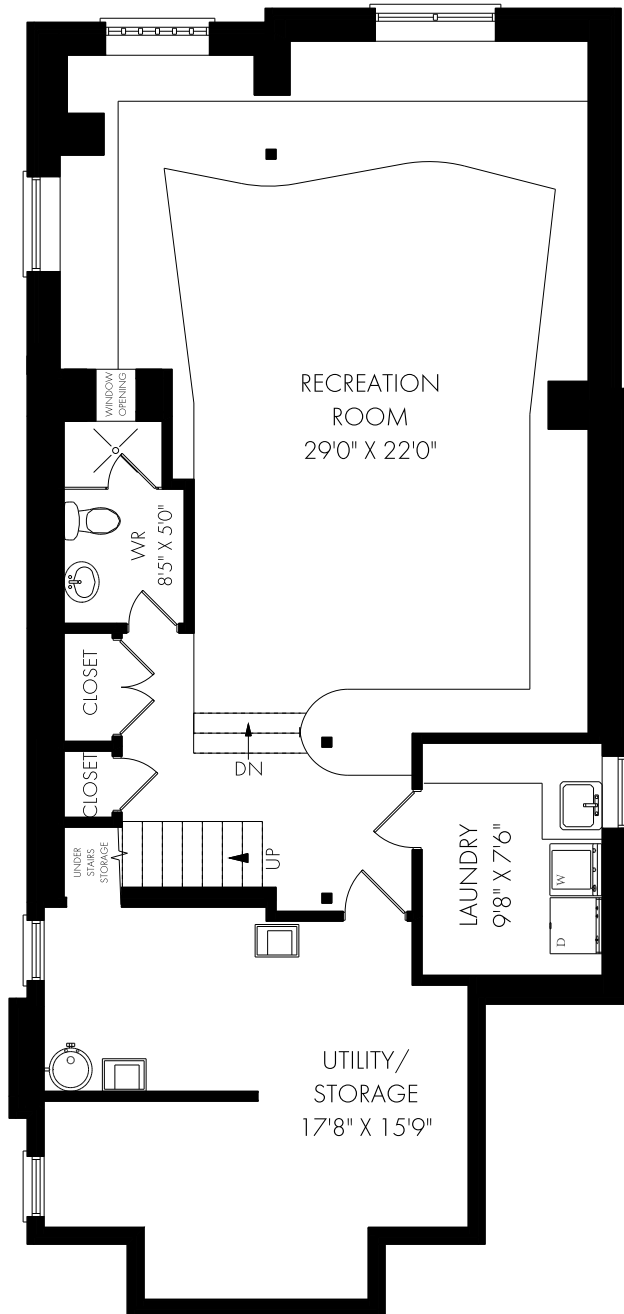


36 Hudson Drive, Toronto



FLOOR PLAN



LOWER LEVEL - 1255 SQUARE FEET



KELLY FULTON

Sales Representative

ROYAL LEPAGE REAL ESTATE SERVICES LTD.,
JOHNSTON & DANIEL DIVISION, BROKERAGE

416.489.2121

cell: 416.520.9655

web: kellyfulton.ca

e mail: kelly@kellyfulton.ca

Monday, March 21, 2022

Note: Although measurements and area believed to be accurate they should be considered approximate. This drawing was prepared by Plans4U for the sole benefit and use by the client. No third party may rely on this drawing without the receipt of reliance letter from Plans4U

PLANS4U © 2019 PLANSFORYOU

PlansForYou.ca/ info@plansforyou.ca /416.999.5096