

Fine Homes and Luxury Properties

SAM McCALL

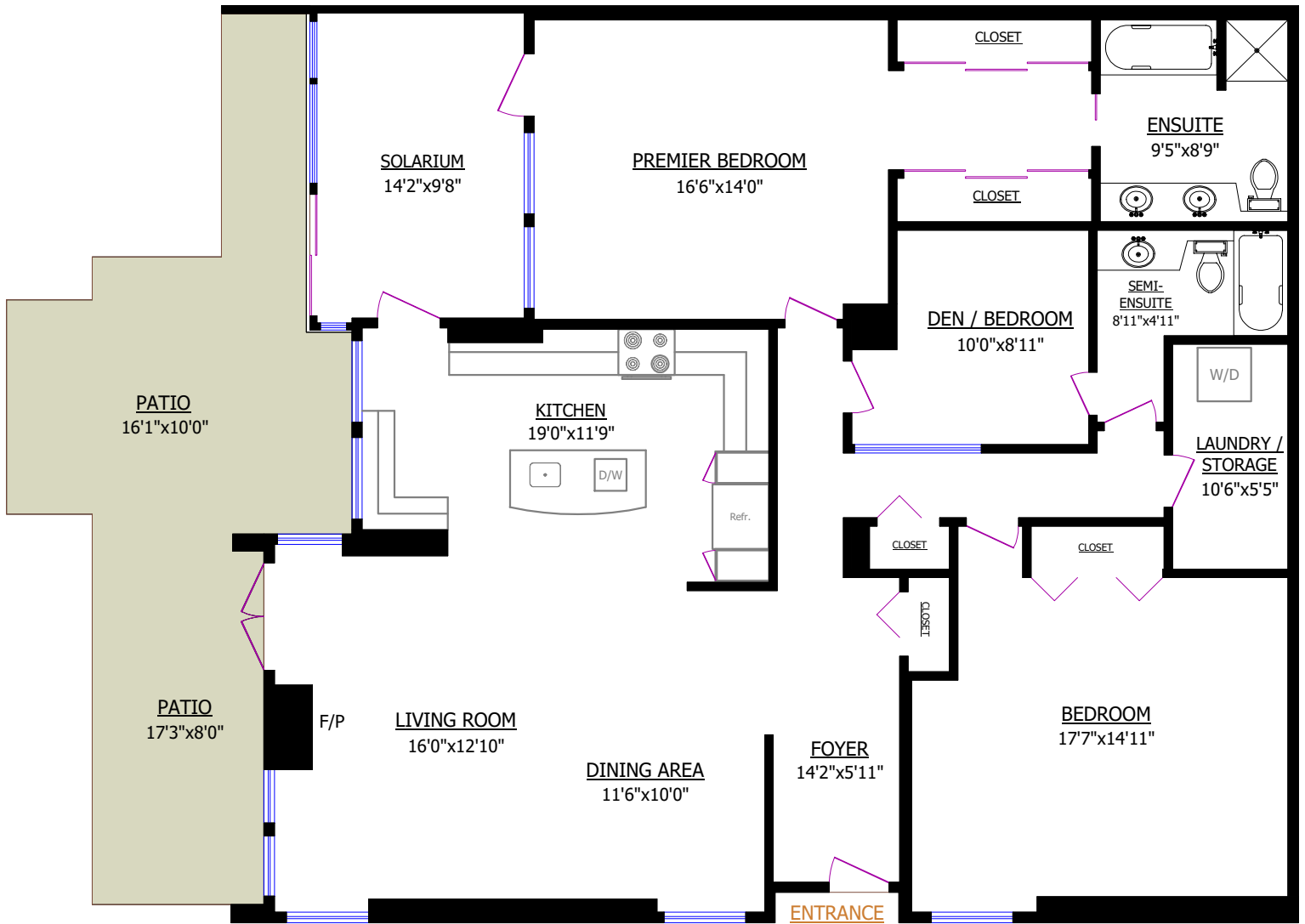


604 313 8411
sammccall.ca

#6 - 2425 EDMONTON BOULEVARD
NORTH VANCOUVER

TOTALS*	
Main Floor:	1,819 sq.ft.

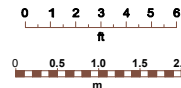
OTHER AREAS*:	
Solarium:	149 sq.ft.



MAIN FLOOR

* Measured to exterior of walls and to the middle of the common walls
* These measurements are not taken from the Strata Plan.

FOR PROMOTIONAL USE ONLY. NOT FOR ARCHITECTURAL,
LEGAL OR CONSTRUCTION USE. E&OE



 © Vancouver Realty Support Group Inc.
www.floorplansvancouver.com
+1-604-761-7919