

**RAY AND LYNDA PROC**

**WWW.PROC.CA**

**604.644.4623**

**info@proc.ca**

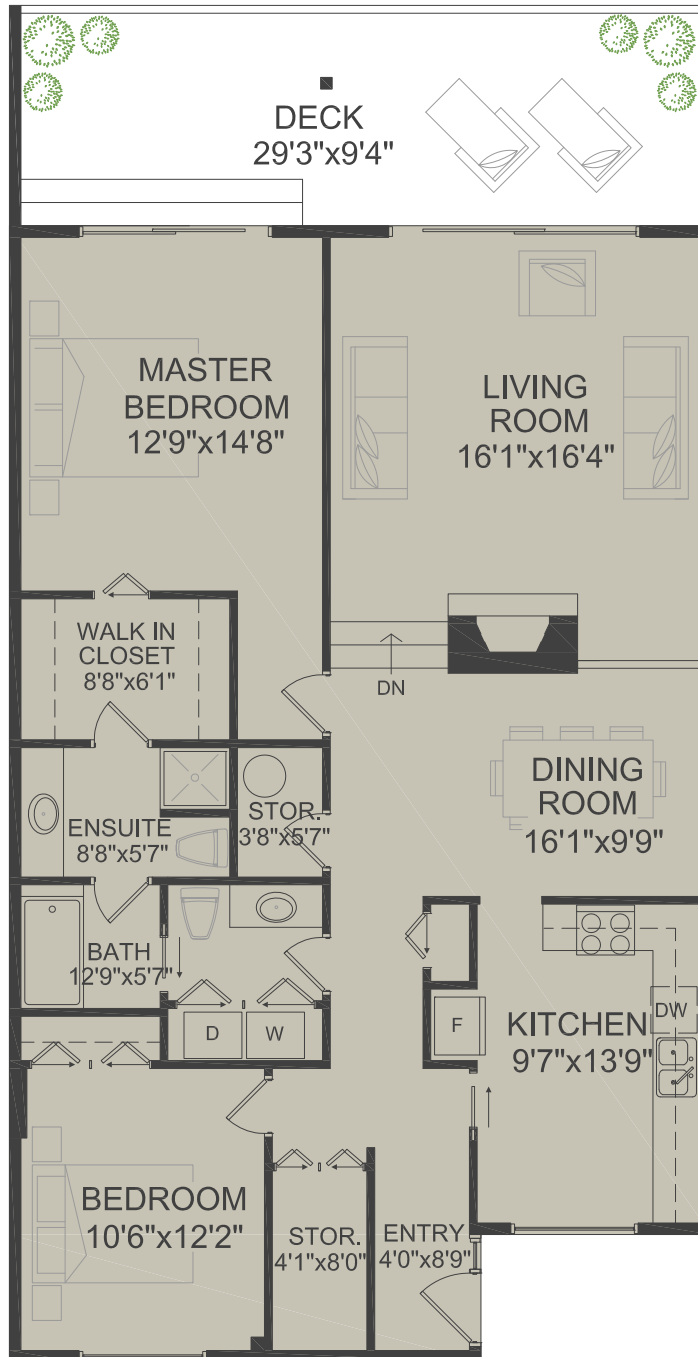
**#7 - 2206 Folkestone Way  
West Vancouver, BC**

TOTAL FLOOR AREA 1,450 SQ.FT.

PLUS

DECK

268 SQ.FT.



Room dimensions are approximate and should not be relied upon without independent verification. Presentation Purposes Only.  
An independently owned and operated member of BRER Affiliates, Inc. Not affiliated with Prudential. Prudential marks used under license.  
[www.realestatefloorplansolutions.com](http://www.realestatefloorplansolutions.com)

