

RAY AND LYNDA PROC

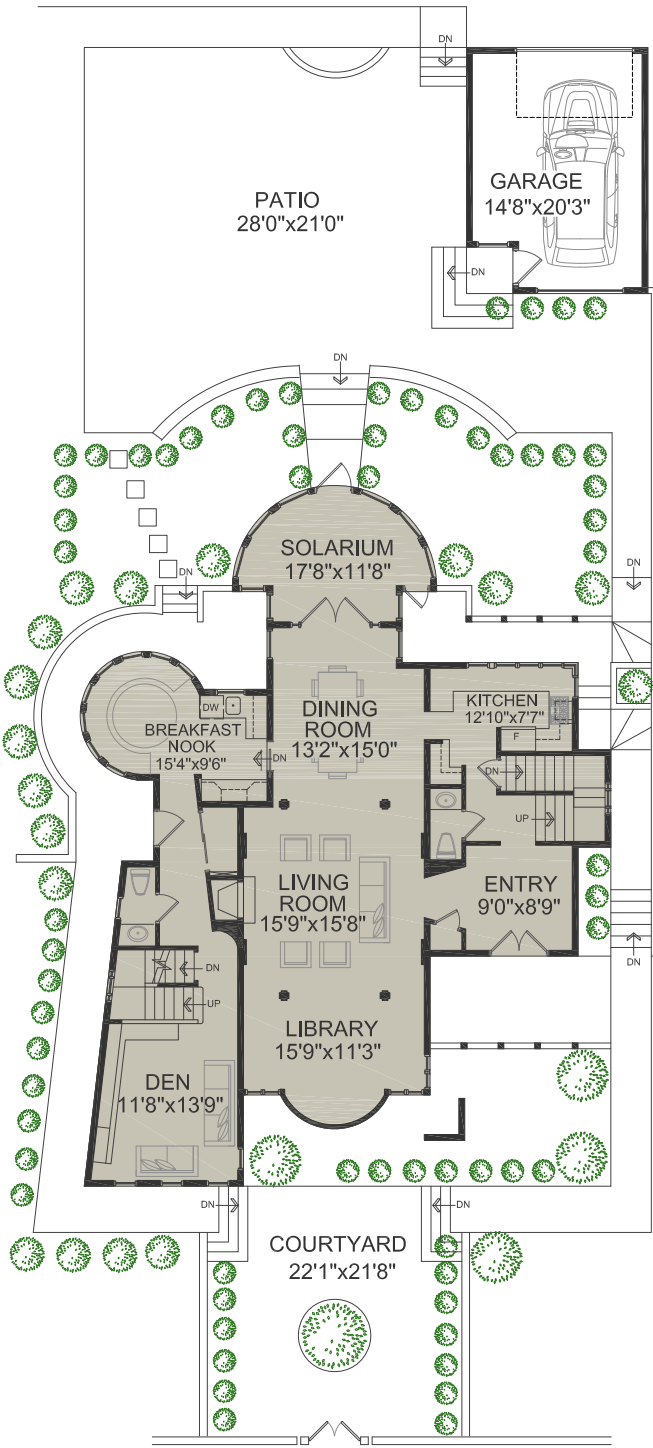
WWW.PROC.CA

604.644.4623

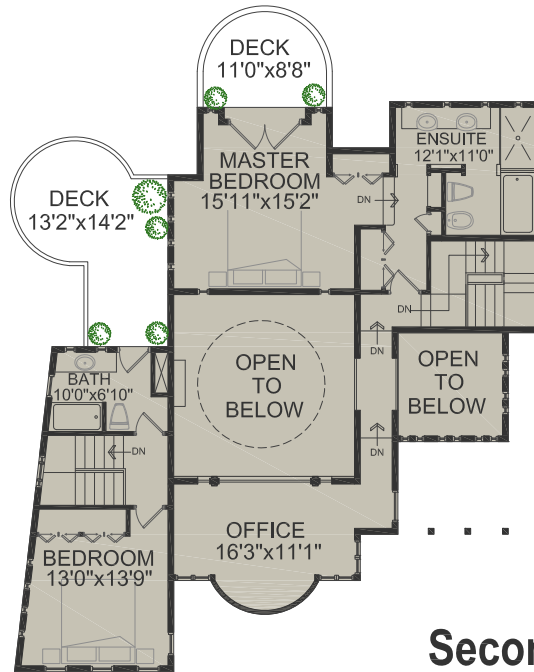
info@proc.ca

1561 Inglewood Avenue  
West Vancouver, BC

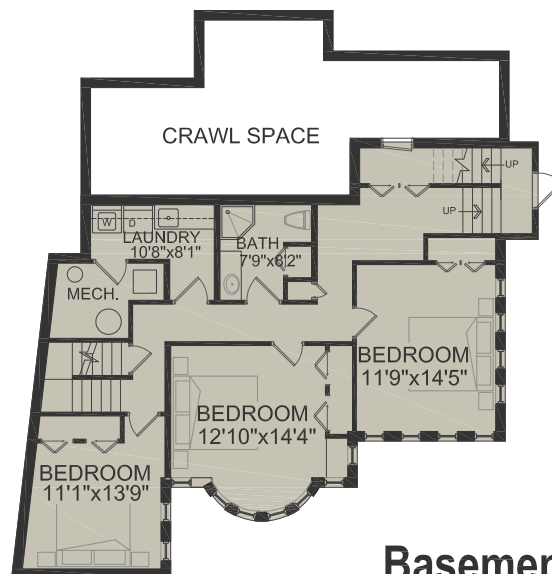
MAIN FLOOR AREA	1,688 SQ.FT.
SECOND FLOOR AREA	1,140 SQ.FT.
BASEMENT FLOOR AREA	1,150 SQ.FT.
<hr/>	
TOTAL FLOOR AREA	3,978 SQ.FT.
PLUS GARAGE	318 SQ.FT.
PLUS DECKS and PATIOS	1,896 SQ.FT.



Main Floor



Second Floor



Basement Floor



Room dimensions are approximate and should not be relied upon without independent verification. Presentation Purposes Only.  
An independently owned and operated member of BRER Affiliates, Inc. Not affiliated with Prudential. Prudential marks used under license.  
www.realestatefloorplansolutions.com