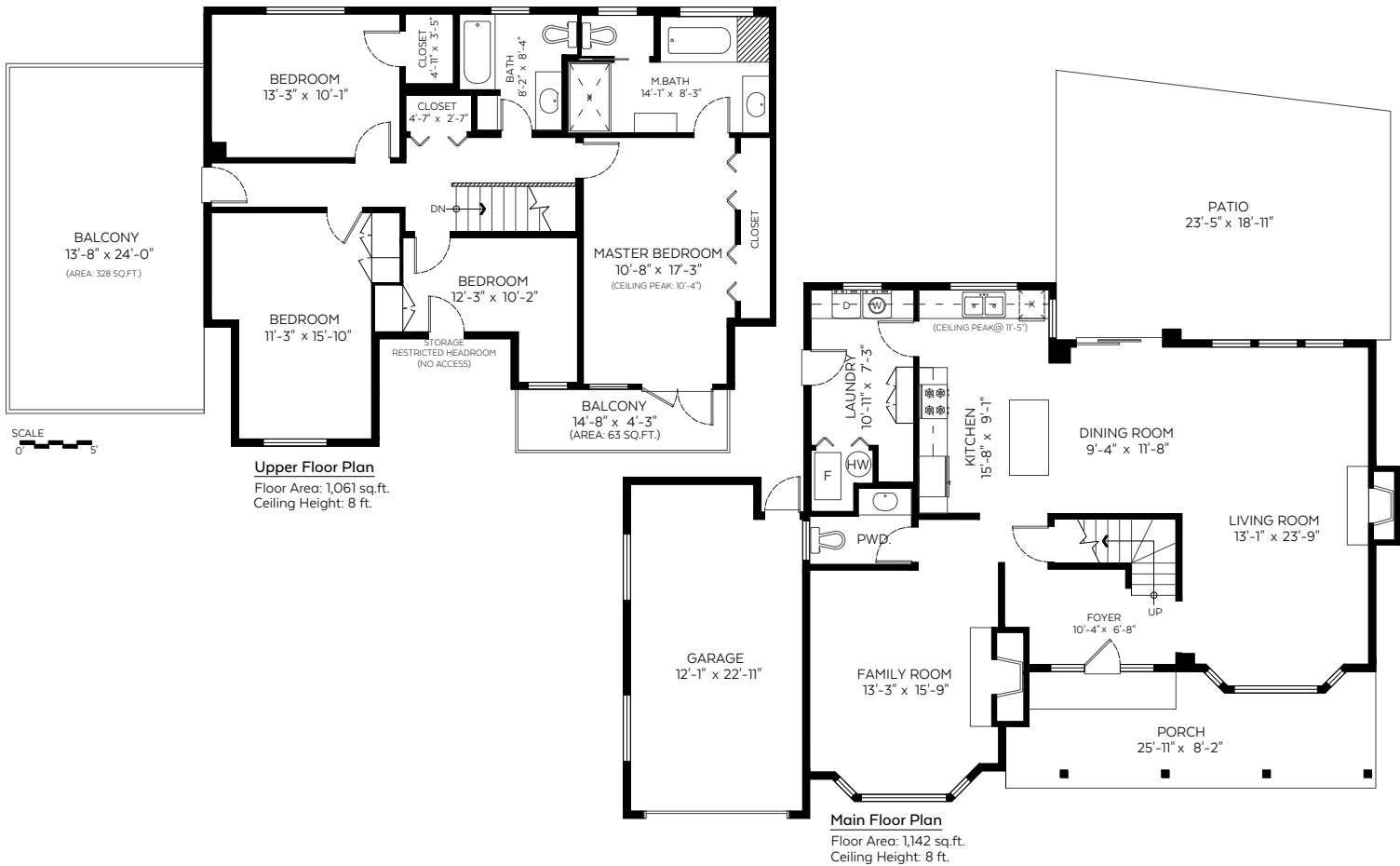


5548 Greenleaf Road,
West Vancouver, B.C.

Main Floor:	1,142 sq.ft.
Upper Floor:	1,061 sq.ft.
Total:	2,203 sq.ft.

Auxiliary Area

Garage:	295 sq.ft.
Patio:	410 sq.ft.
Porch:	193 sq.ft.
Balconies:	391 sq.ft.



Valid Until: November 04, 2021

The floor plan is not suitable for architectural/construction and is covered under E&O. © Excelsior Measuring Inc. 2021. All rights reserved for Excelsior Measuring Inc. Users shall not publish and distribute such material (in whole or in part) and/or incorporate it in other works in any form.



EVERY HOME DEMANDS ITS OWN STRATEGY ...

THAT'S THE POINT.

604.833.4862

WWW.DEREKGRECH.COM