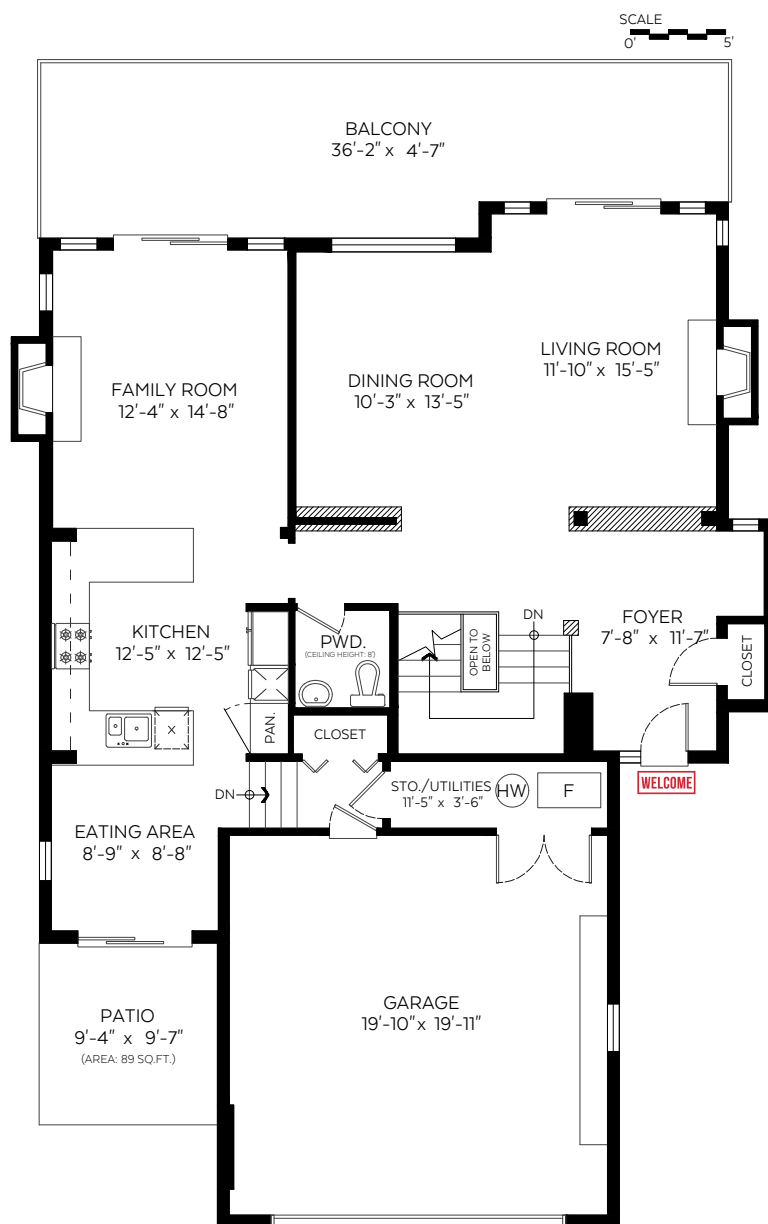
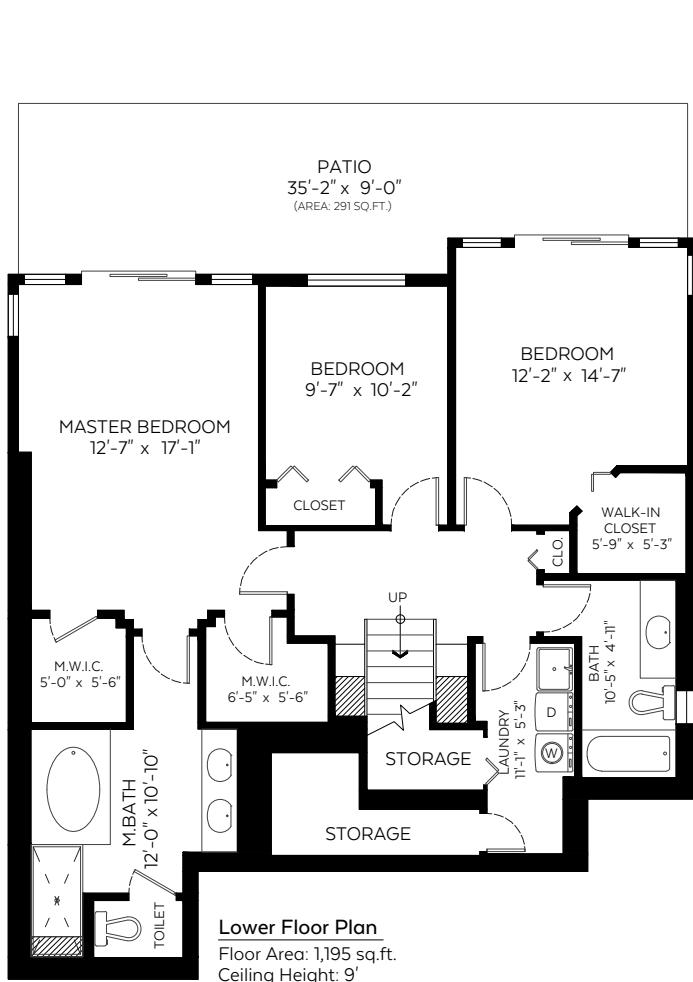


# 4938 Edendale Lane West Vancouver



Main Floor:	1,214 sq.ft.
Lower Floor:	1,195 sq.ft.
<b>Total:</b>	<b>2,409 sq.ft.</b>
Open To Below:	7 sq.ft.

## Auxiliary Area

Garage:	431 sq.ft.
Patios:	380 sq.ft.
Balcony:	308 sq.ft.

The floor plan is not suitable for architectural/construction and is covered under E&O. © Excelsior Measuring Inc. 2019. All rights reserved for Excelsior Measuring Inc. Users shall not publish and distribute such material (in whole or in part) and/or incorporate it in other works in any form.



EVERY HOME DEMANDS ITS OWN STRATEGY...  
**THAT'S THE POINT.**



604.833.4862

WWW.DEREKGRECH.COM