

Fine Homes and Luxury Properties

SAM McCALL

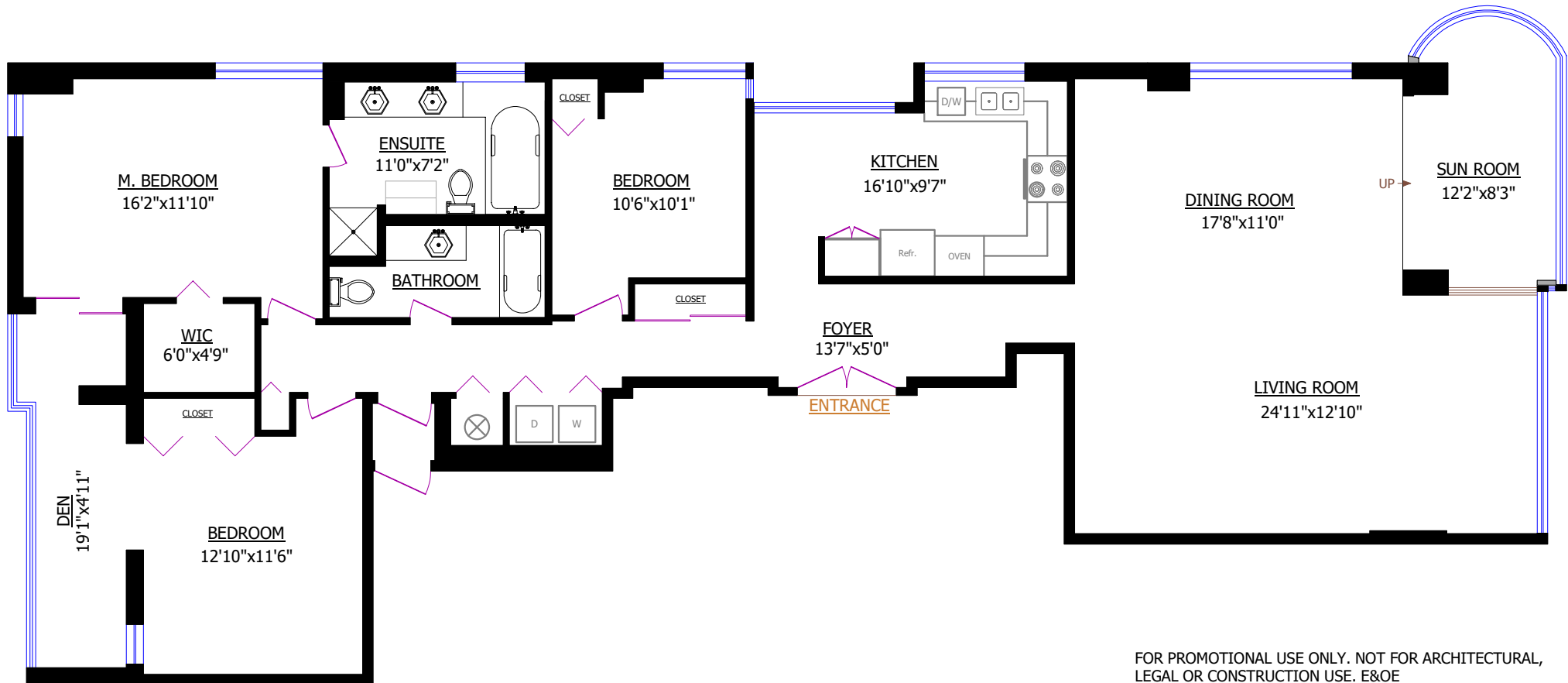
604 313 8411
sammccall.ca

RE/MAX
REALTY LTD.

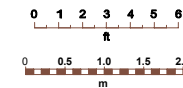
**#601 - 1972 BELLEVUE AVENUE
WEST VANCOUVER**

TOTAL*: 2,012 sq.ft.

* Measured to exterior of walls and to the middle of the common walls
* These measurements are not taken from the Strata Plan.



FOR PROMOTIONAL USE ONLY. NOT FOR ARCHITECTURAL,
LEGAL OR CONSTRUCTION USE. E&OE



© Vancouver Realty Support Group Inc.
www.floorplansvancouver.com
+1-604-761-7919