

2306 Folkestone Way West Vancouver, BC

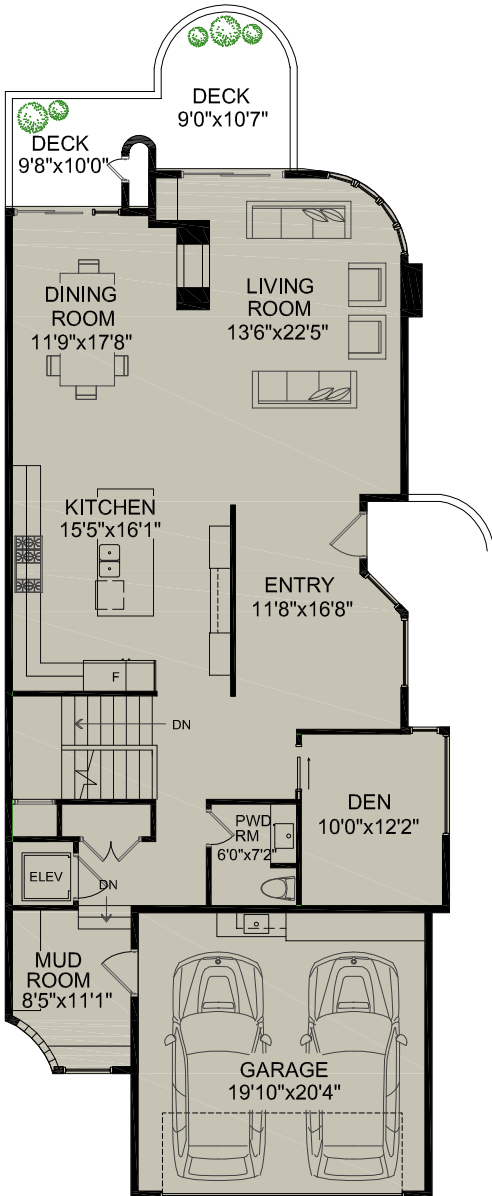
RAY AND LYNDA PROC

WWW.PROC.CA

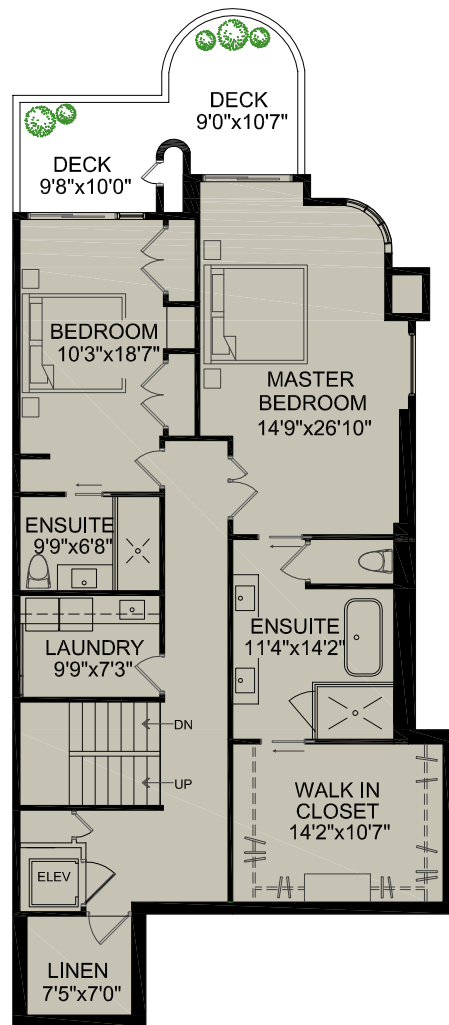
604.644.4623

info@proc.ca

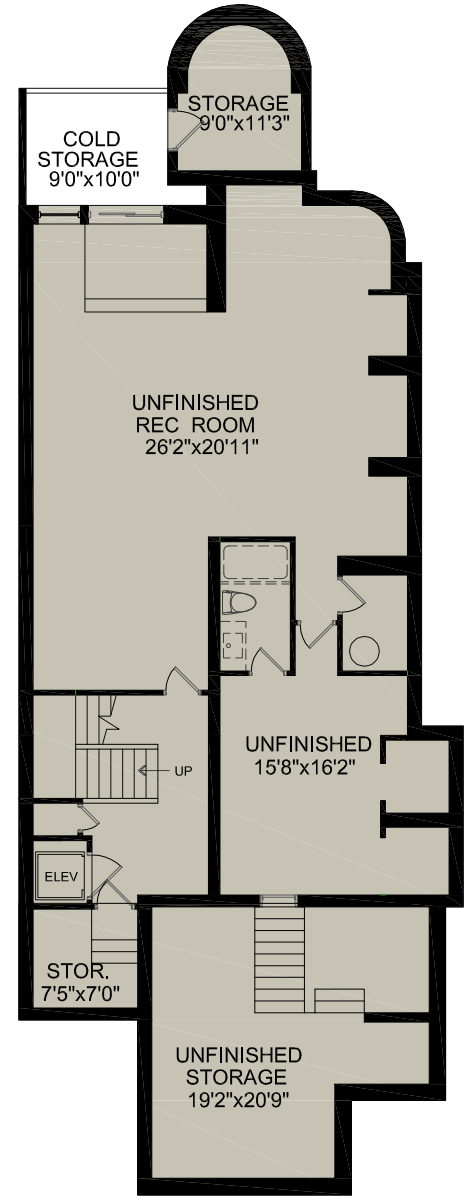
UPPER FLOOR	1,570 SQ.FT.
MID / SECOND FLOOR	1,551 SQ.FT.
LOWER FLOOR(UNFINISHED)	1,358 SQ.FT.
TOTAL FLOOR AREA	4,479 SQ.FT.
PLUS	
HEATED STORAGE	475 SQ.FT.
COLD STORAGE	203 SQ.FT.
GARAGE	428 SQ.FT.
DECKS	350 SQ.FT.



MAIN FLOOR



MID / SECOND FLOOR



LOWER FLOOR

Room dimensions are approximate and should not be relied upon without independent verification. Presentation Purposes Only.
An independently owned and operated member of BRER Affiliates, Inc. Not affiliated with Prudential. Prudential marks used under license.
www.realestatefloorplansolutions.com

