

# UNIT 1504 650 16TH STREET

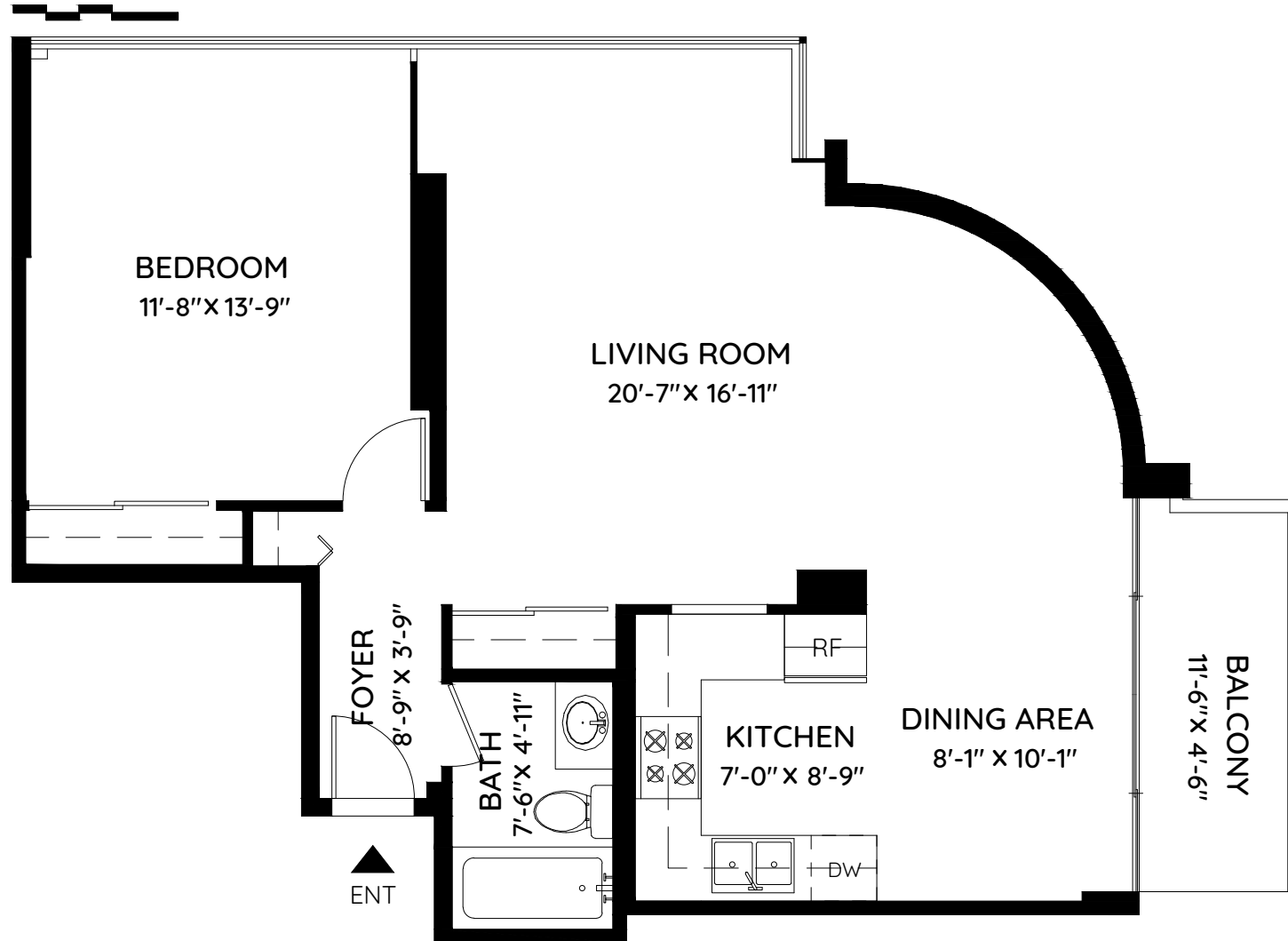
WEST VANCOUVER, BC

TOTAL AREA 760 SQ.FT.

BALCONY 60 SQ.FT.

CEILING HEIGHTS 8'-0"

0 ft 3 ft 5 ft



MAIN FLOOR  
760 SQ.FT.  
CH: 8'-0"



The floor plan and the measurements are approximate and are to be used for advertising usage only.  
Not suitable for architectural or construction. E&OE. © 2019 KEYPLAN Measuring Inc.

*Fine Homes and Luxury Properties*

**SAM McCALL**  
PERSONAL REAL ESTATE CORPORATION

RE/MAX  
MASTERS REALTY LTD.

604 313 8411  
sammccall.ca