

UNDERGROUND  
PARKING

**RAY AND LYND A PROC**

**WWW.PROC.CA**

**604.644.4623**

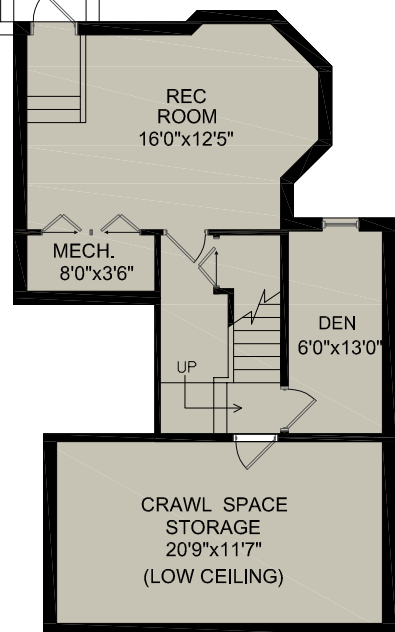
**info@proc.ca**

## 259 E 6th Street North Vancouver, BC

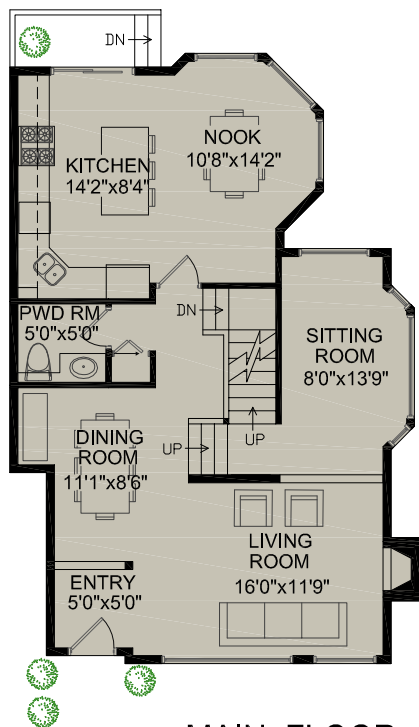
MAIN FLOOR	860 SQ.FT.
SECOND FLOOR	755 SQ.FT.
LOWER FLOOR	515 SQ.FT.
<b>TOTAL FLOOR AREA</b>	<b>2,130 SQ.FT.</b>

PLUS:

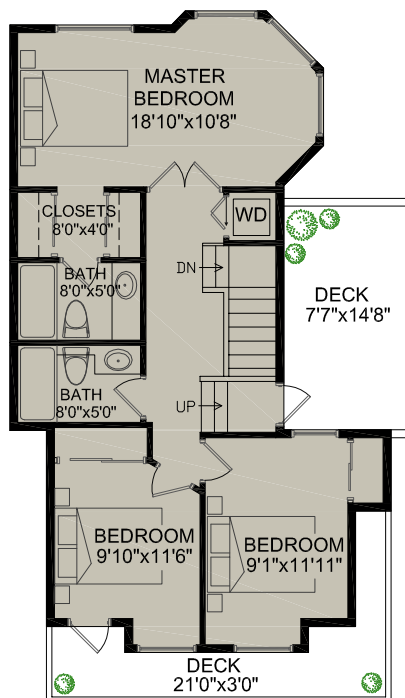
DECKS 240 SQ.FT.



**BASEMENT**



**MAIN FLOOR**



**SECOND FLOOR**

Room dimensions are approximate and should not be relied upon without independent verification. Presentation Purposes Only.  
An independently owned and operated member of BRER Affiliates, Inc. Not affiliated with Prudential. Prudential marks used under license.  
Measurements taken from existing plans. [www.realestatefloorplansolutions.com](http://www.realestatefloorplansolutions.com)



**NORTH**