

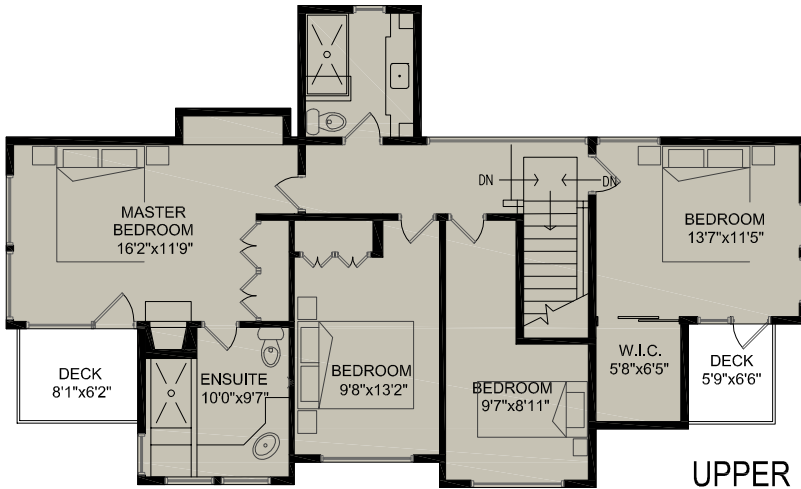
**RAY AND LYNDA PROC**

**WWW.PROC.CA**

**604.644.4623**

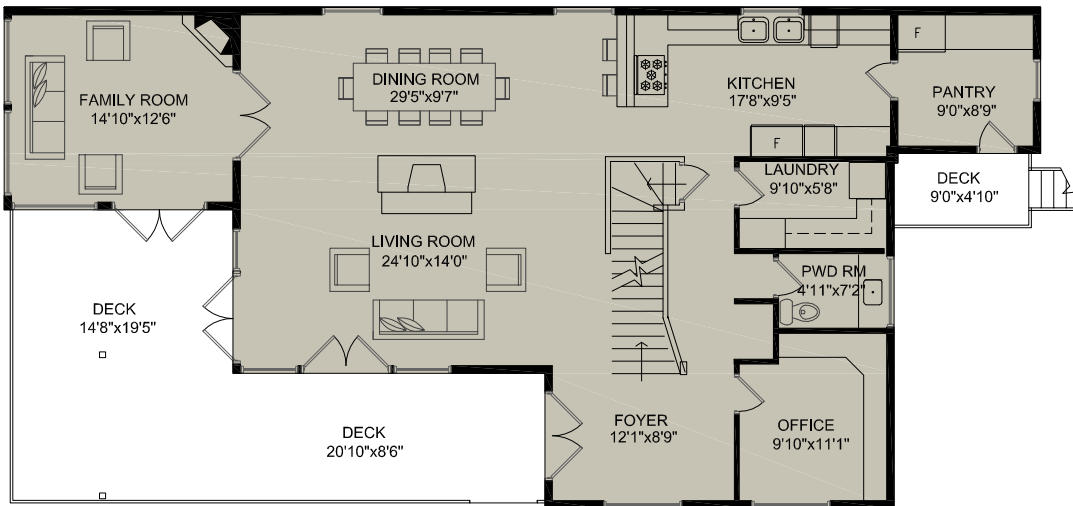
**info@proc.ca**

# 4735 Highway West Vancouver, BC

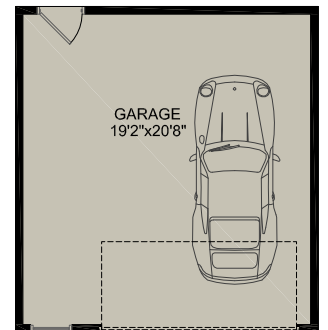


**UPPER FLOOR**

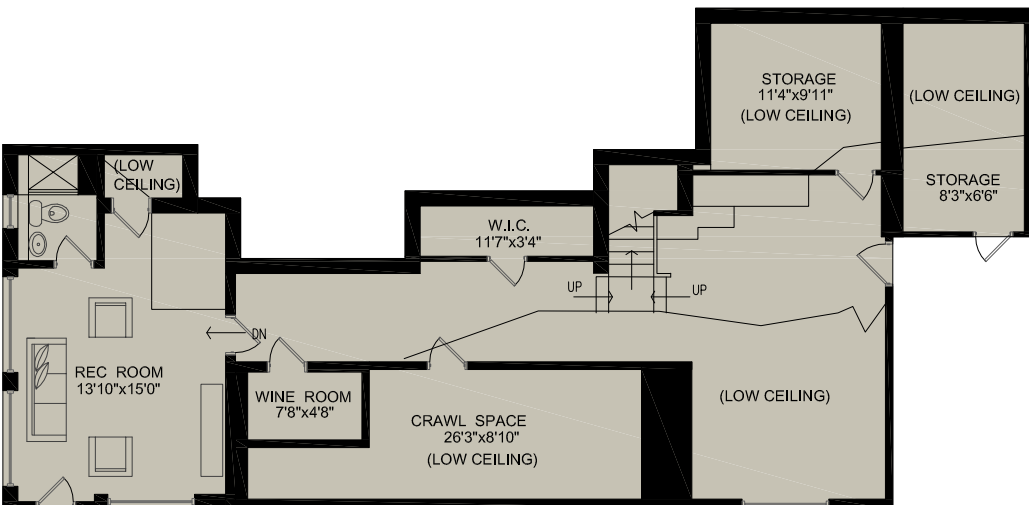
MAIN FLOOR	1,586 SQ.FT.
SECOND FLOOR	1,090 SQ.FT.
LOWER FLOOR	948 SQ.FT.
<b>TOTAL FLOOR AREA</b>	<b>3,624 SQ.FT.</b>
<b>PLUS</b>	
GARAGE	440 SQ.FT.
DECKS	603 SQ.FT.



**MAIN FLOOR**



**GARAGE**



**LOWER FLOOR**



**NORTH**

Room dimensions are approximate and should not be relied upon without independent verification. Presentation Purposes Only.  
An independently owned and operated member of BRER Affiliates, Inc. Not affiliated with Prudential. Prudential marks used under license.  
Measurements taken from existing plans. [www.realestatefloorplansolutions.com](http://www.realestatefloorplansolutions.com)