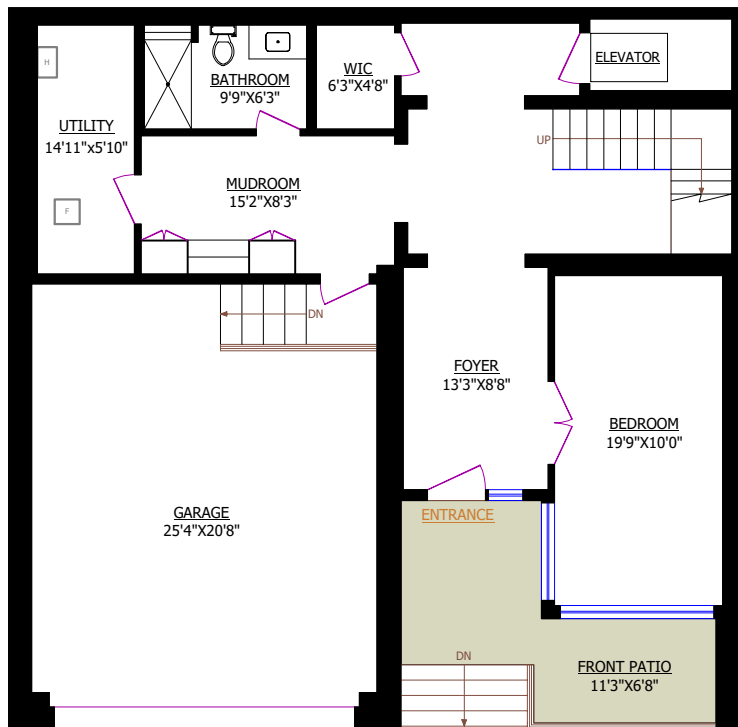


MAIN FLOOR



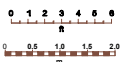
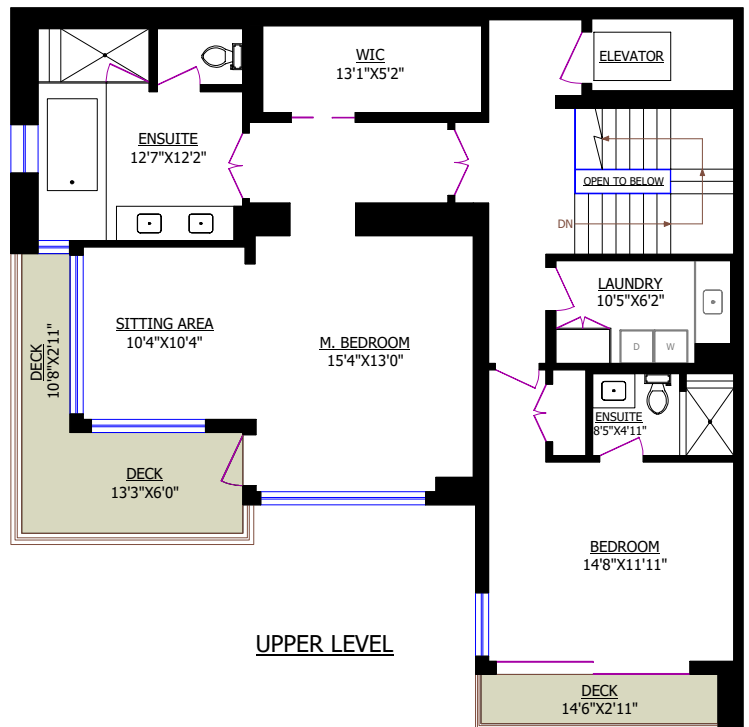
LOWER LEVEL



2761 HIGHVIEW PLACE WEST VANCOUVER

TOTALS*	
Main Floor (finished):	1,412 sq.ft.
Upper Level (finished):	1,314 sq.ft.
Lower Level (finished):	1,047 sq.ft.
TOTAL FINISHED:	3,773 sq.ft.
TOTAL UNFINISHED:	0 sq.ft.
GRAND TOTAL:	3,773 sq.ft.

OTHER AREAS:	
Garage:	606 sq.ft.



* Measured to exterior of walls and to the middle of the common walls
* These measurements are not taken from the Strata Plan.

