

RAY AND LYNDA PROC

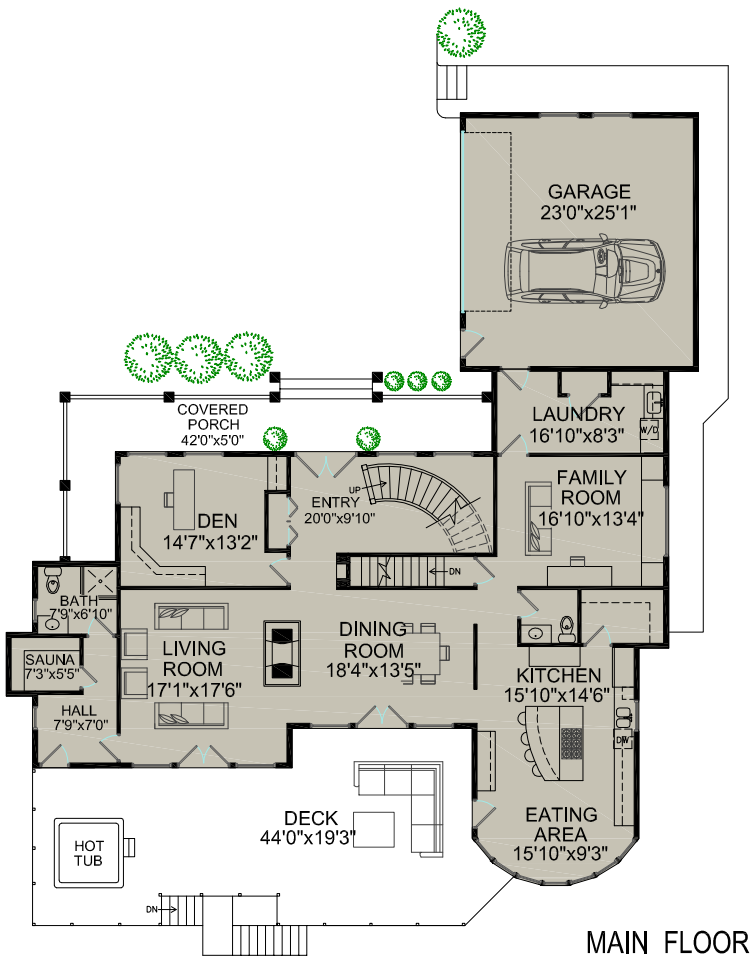
WWW.PROC.CA

604.644.4623

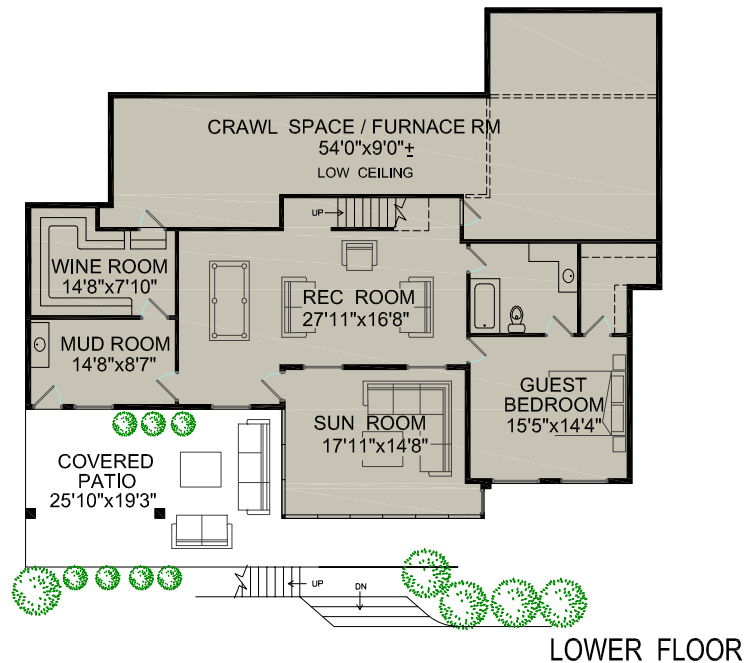
info@proc.ca

**2644 Rosebery Avenue
West Vancouver, BC**

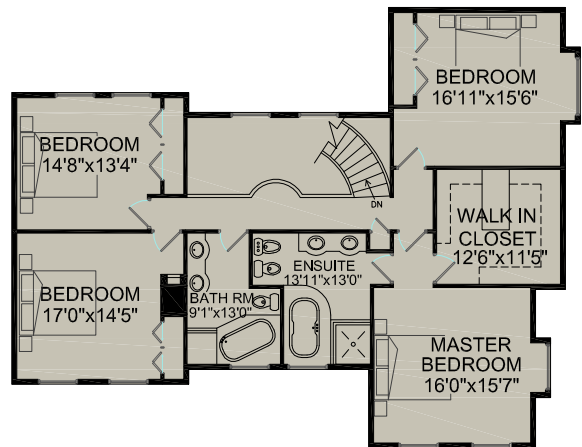
LOWER FLOOR	1,535 SQ.FT.
MAIN FLOOR	2,190 SQ.FT.
UPPER FLOOR	1,660 SQ.FT.
TOTAL FLOOR AREA	5,385 SQ.FT.
PLUS	
GARAGE	620 SQ.FT.
STORAGE	875 SQ.FT.



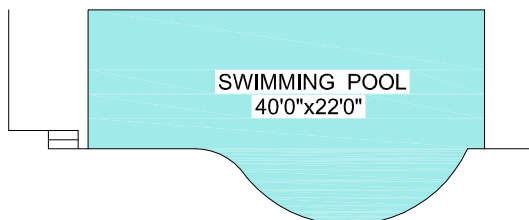
MAIN FLOOR



LOWER FLOOR



SECOND FLOOR



Room dimensions are approximate. Measurements to be verified by the buyer. www.realestatefloorplansolutions.com
An independently owned and operated member of BRER Affiliates, Inc. Not affiliated with Prudential. Prudential marks used under license.



NORTH