

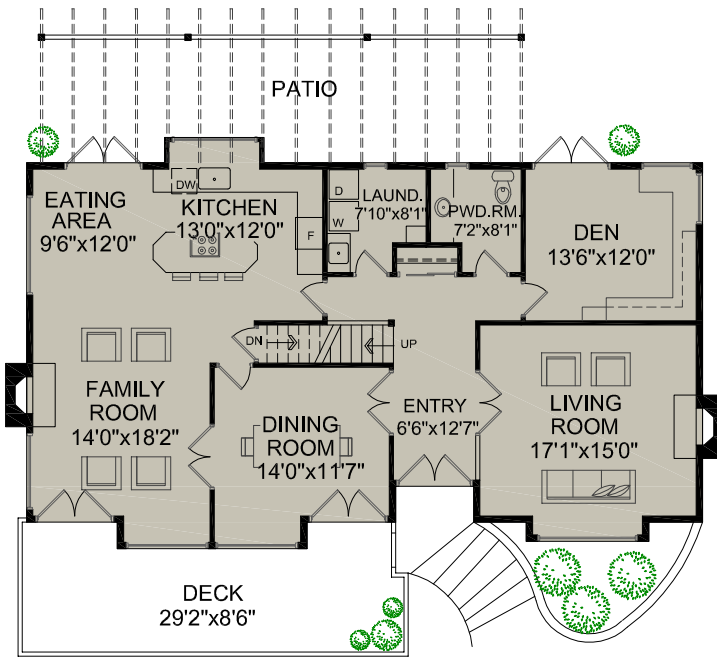
RAY AND LYNDA PROC

WWW.PROC.CA

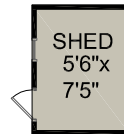
604.644.4623

info@proc.ca

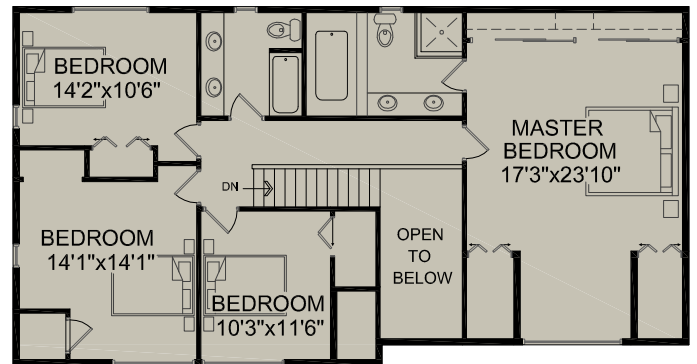
**4723 Westwood Road
West Vancouver, BC**



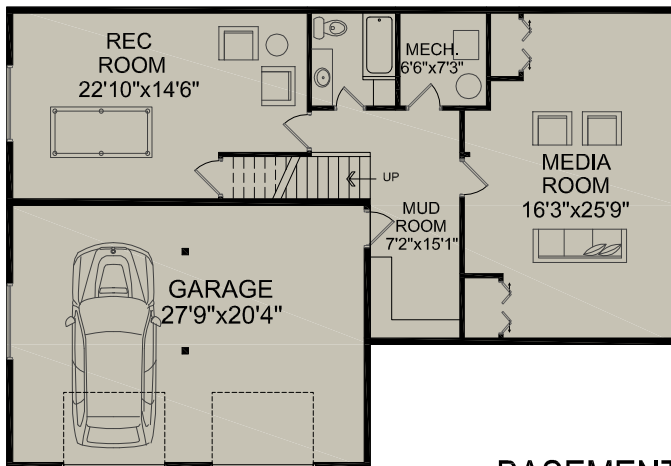
MAIN FLOOR



SHED



SECOND FLOOR



BASEMENT

MAIN FLOOR	1,562 SQ.FT.
SECOND FLOOR	1,390 SQ.FT.
BASEMENT	1,100 SQ.FT.
TOTAL FLOOR AREA	4,052 SQ.FT.

PLUS	
GARAGE	600 SQ.FT.
FRONT DECK	292 SQ.FT.
GARDEN SHED	80 SQ.FT.



Room dimensions are approximate. Presentation Purposes Only. Measurements to be verified by the buyer. www.realestatefloorplansolutions.com

