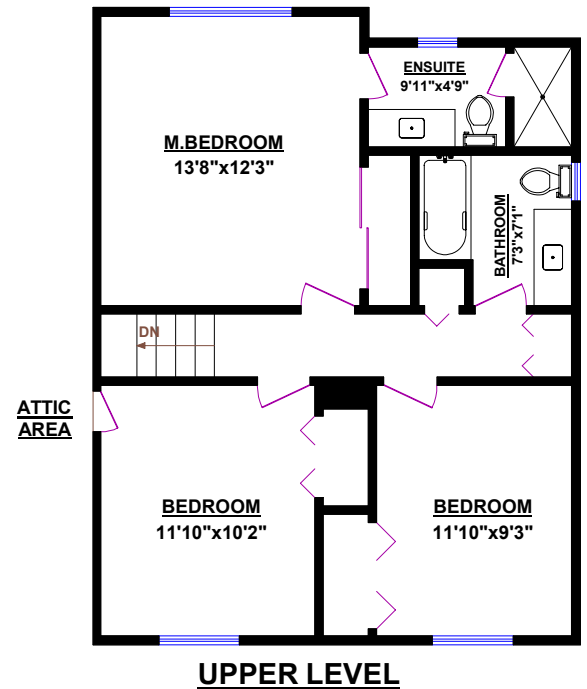




**4628 WOODBURN DRIVE
WEST VANCOUVER**

TOTALS	
Main Floor (finished):	1296 sq.ft.
Upper Level (finished):	681 sq.ft.
TOTAL FINISHED:	1,977 sq.ft.
Main Floor (unfinished):	14 sq.ft.
TOTAL UNFINISHED:	14 sq.ft.
GRAND TOTAL:	1,991 sq.ft.

OTHER AREAS:	
Workshop:	219 sq.ft.
Garage:	384 sq.ft.
Storage:	18 sq.ft.
Green House:	228 sq.ft.
Shed:	95 sq.ft.



DECK WITH HOT-TUB AREA
41'2"x25'4" approx.

