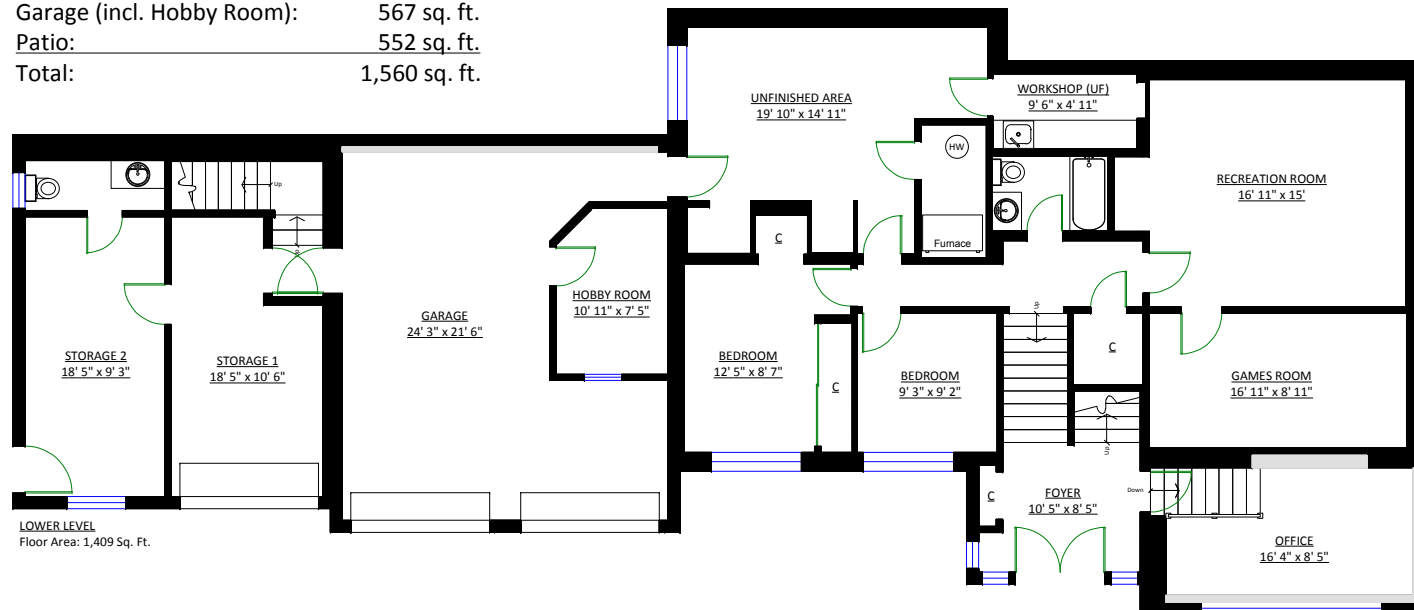
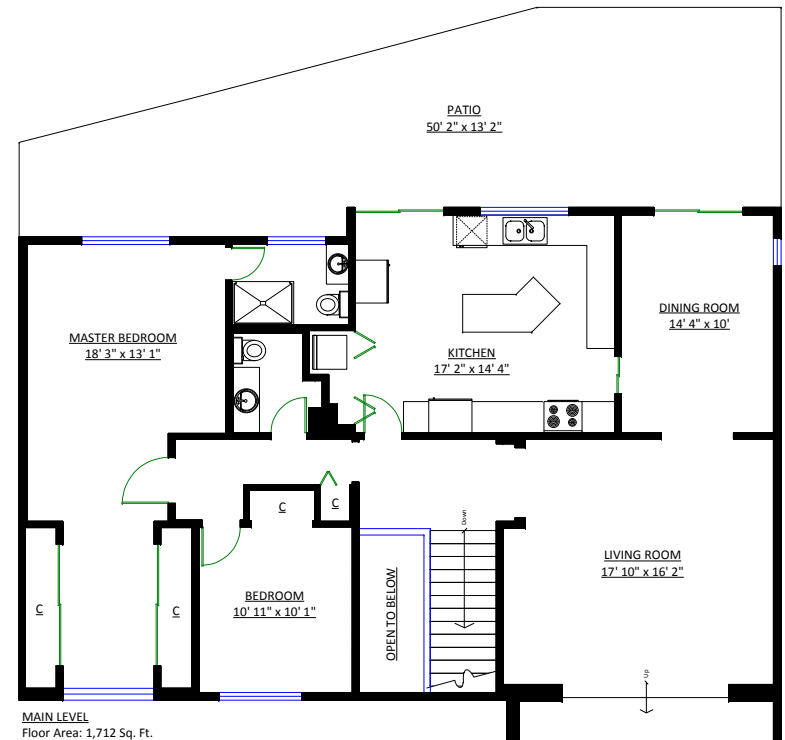
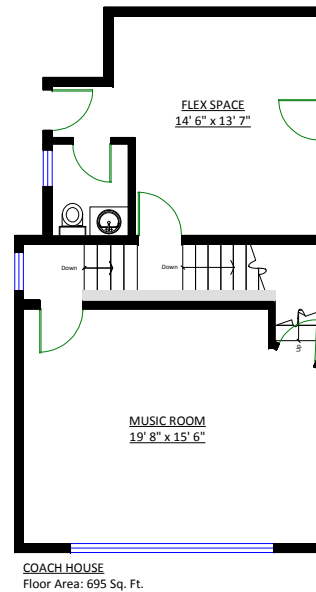


**335 Southborough Drive,  
West Vancouver, B.C.**

**Totals\*\***

|              |               |
|--------------|---------------|
| Main Level:  | 1,712 sq. ft. |
| Lower Level: | 1,409 sq. ft. |
| Coach House: | 695 sq. ft.   |
| Fin. Total:  | 3,816 sq. ft. |
| UF Area:     | 390 sq. ft.   |
| G. TOTAL:    | 4,206 sq. ft. |

|                             |               |
|-----------------------------|---------------|
| Storage 1 & 2 (incl. BATH): | 441 sq. ft.   |
| Garage (incl. Hobby Room):  | 567 sq. ft.   |
| Patio:                      | 552 sq. ft.   |
| Total:                      | 1,560 sq. ft. |



\*\* Approx. based on interior measurements to exterior walls  
\*\* Total square footage not taken from original blueprints

