

March, 1959 25 cents

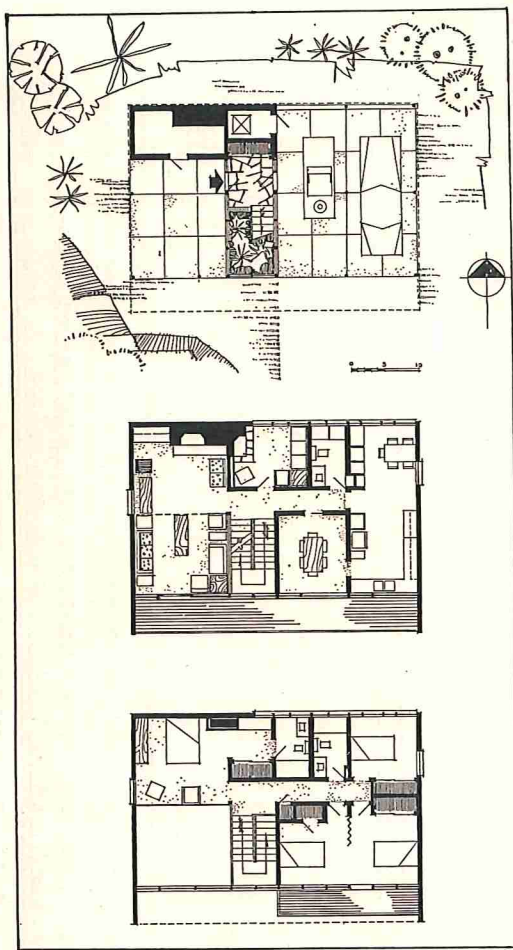
Western Homes

and LIVING

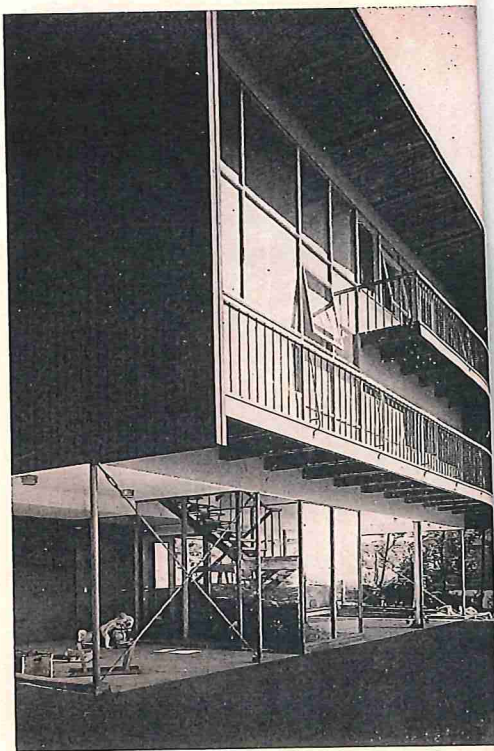
New rhododendrons • Six award-winning homes • Four remodelled
kitchens • Outboard cruisers • Something special for brunch



Designed by architects Carlberg & Jackson as a floating 2-storey cube supported off the ground on delicate steel posts, the David Poll house is a striking variation on West Coast Contemporary. High living room and balcony bedroom overlook view of Vancouver harbor through curtain window wall. House floats above concrete slab with play area on the left, double carport on the right, and glassed-in entrance stairwell in the center. Lower balcony opens off living room. Upper balcony leads off children's bedrooms and playroom.



Architect Don Jackson (Carlberg, Jackson & Associates) devised an economical 3-level plan for the David Poll house which provides a total of 2100 square feet of enclosed floor area plus about 300 square feet of sundeck, a double carport, and a paved play area, all under shelter. The two fireplaces (one in the den) and furnace require one chimney. Steel posts establish 11-foot module of interior partitions.



"MAKE IT as contemporary as you like," David and Rosemary Poll told architect Don Jackson when he was designing their new West Vancouver home. Other requirements: four bedrooms, with the master suite on an open balcony . . . all major rooms to face the British Properties view of Vancouver harbour . . . a lot of living space at reasonable economy.

With these needs in mind, Don Jackson conceived the idea of a 2-storey floating cube raised on a glassed-in entry and supported by delicate steel posts. The recessed face of the cube is almost entirely glass, with a 22-foot high curtain window wall facing the living room, open stairwell, and balcony bedroom. The dining room, kitchen, and two upstairs bedrooms also overlook the view.

While the entrance stairway, living room, and master bedroom feature an open plan which gives an airy, spacious feeling to this main living area, the dining room, kitchen, utility room, and children's bedrooms are partitioned and secluded for privacy.

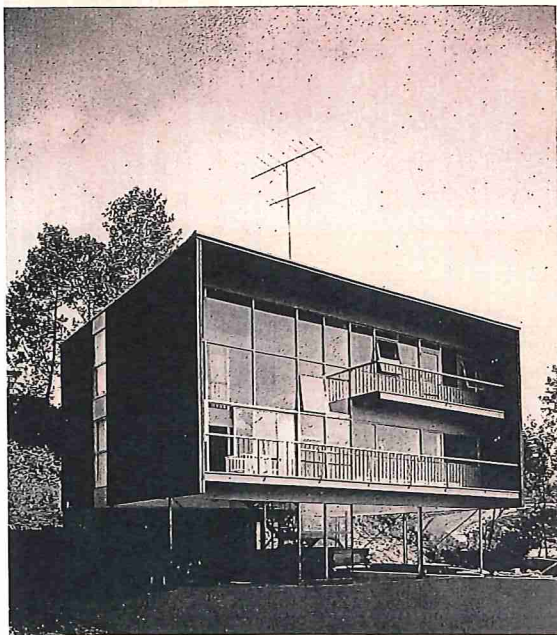
Virtually no excavation was required in spite of the steeply sloping site. The carport and en-

trance slab was poured on bedrock. A utility and storage car supports one corner of the house on this lower level, while full length glue-laminated beams and 3½" steel posts, cross-braced for lateral stability, hold the floating cube.

Half of the open space under the house provides a sheltered double carport . . . the other half is a protected play area for the three Poll children, aged 5, 3, and 1.

The second floor is also built on glue-laminated beams, and the flat roof deck is exposed 4" cedar tongue-and-groove planking. Exterior walls and interior partitions (all non-bearing) are standard stud framing. The interior finish is predominantly plaster (which hasn't shown a crack since the house was built) and decorative hardwood paneling. The end living room wall, however, carries the same dark-stained vertical siding used on the exterior.

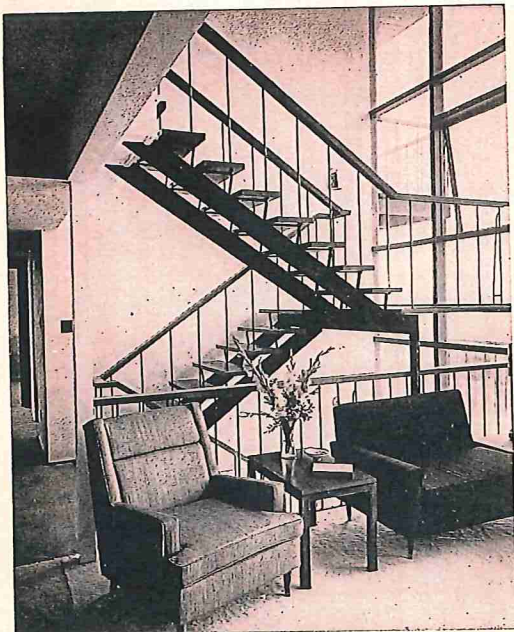
Modular post-and-beam construction of a basically simple 2-storey rectangular plan offered many cost-cutting advantages. "This is probably the most economical house, for its floor area, that we have ever done," says architect Don Jackson.



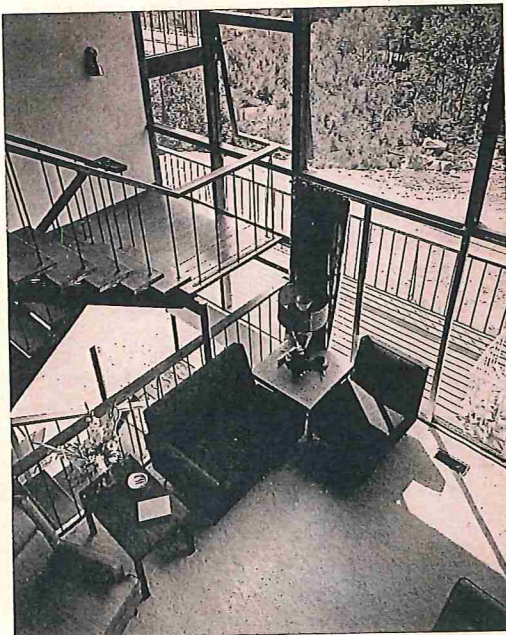
A FLOATING CUBE FOR CONTEMPORARY LIVING . . .

End wall of living room carries through the walnut-stained vertical siding used on the exterior. Corner door, behind drapes, opens to balcony sundeck.





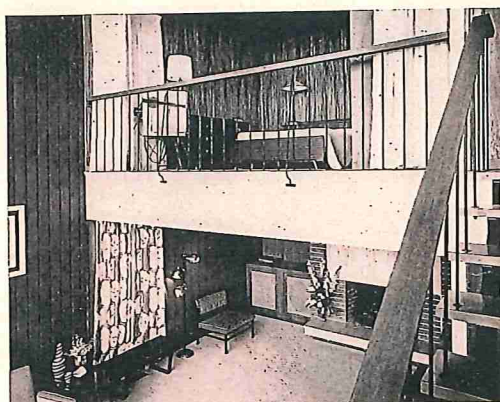
Three-storey open-tread stairway is constructed on a welded steel frame that is part of the rigid structural framework of the house. Thirty-foot plaster wall hasn't shown a crack. White rayon carpeting sets off upholstery tones of grey, coral, and charcoal.



TOP RIGHT—Looking down from bedroom balcony shows open plan of this central living area with dramatic stairwell leading to glass enclosed entry at ground level. Note the wide living room sundeck with slatted plank decking for drainage. Corner table has top of Travertine marble repeating the fireplace panel.

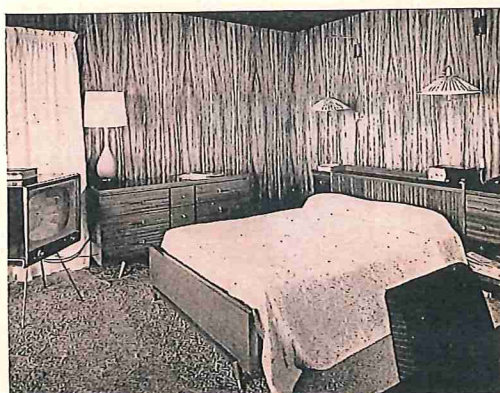
floating cube for contemporary living . . .

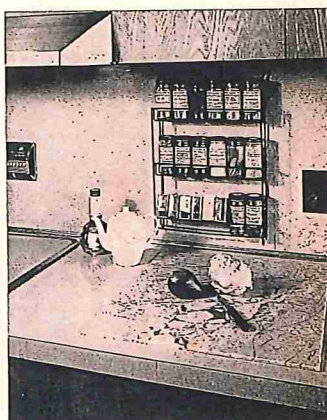
C O N T I N U E D



RIGHT CENTER—Novel feature of the Poll house plan is the master bedroom suite on a mezzanine balcony overlooking the living room and a magnificent view through the curtain window wall. Unlined white drapes screen the bedroom as desired.

Master bedroom is panelled in a beautifully matched pattern of exotic camphorwood. Suite is walnut. Planned as a room for relaxation, bedroom includes swivel-mounted TV, bookcase headboard, magazine shelves, radio-clock, and telephone extension.



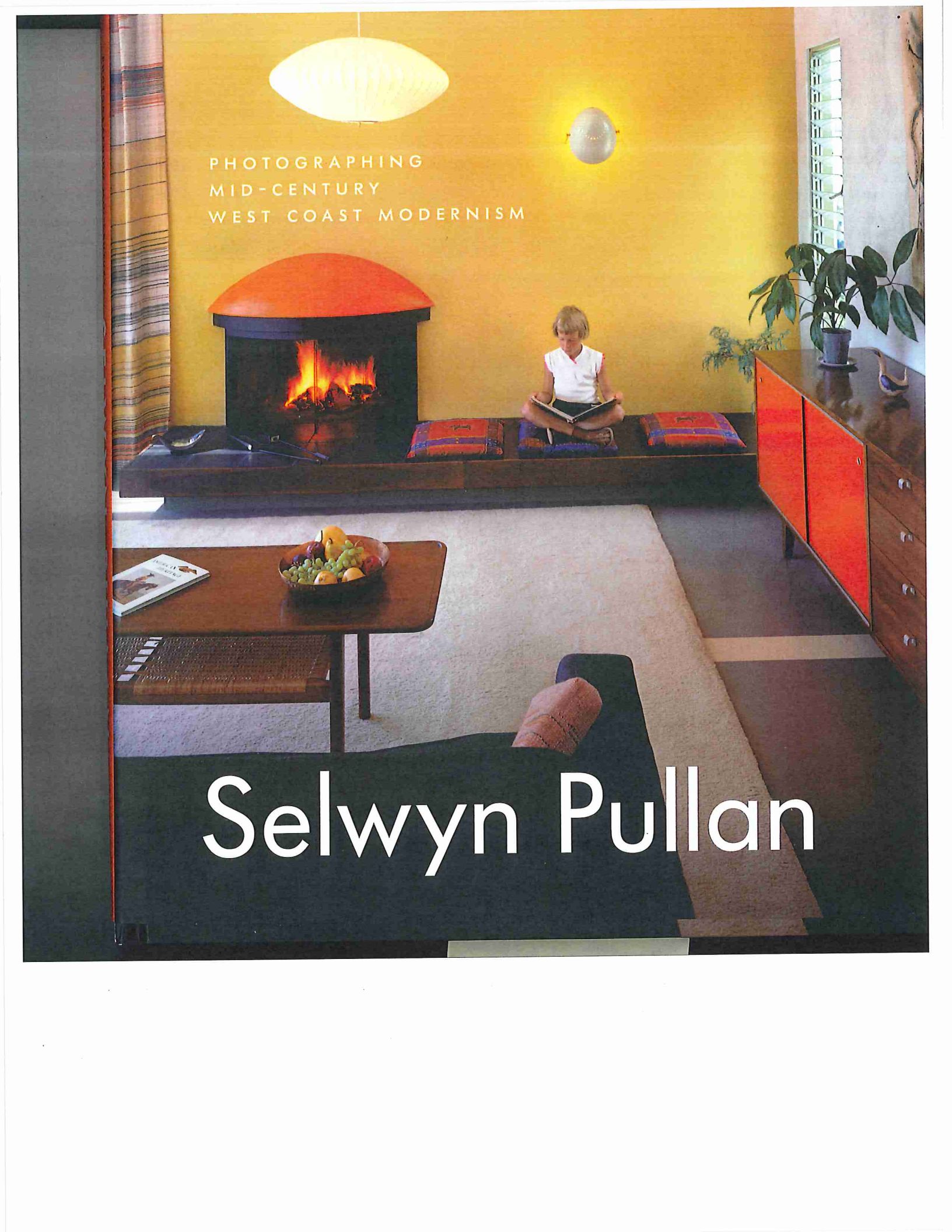


Kitchen also enjoys view over British Properties slope to Vancouver harbour. Built-in appliances and generously planned storage space make it an efficient and easily maintained kitchen. Cabinetwork is natural-finished ash. Appliances are emerald green. Plastic countertop, edging, and high splashback are a fabric patterned beige. Stovetop controls are located on back wall, out of children's reach. Polished marble slab set into plastic countertop makes an ideal pastryboard. Spice rack is convenient to built-in stovetop on the left. Copper hood above has exhaust fan and light.



PHOTOGRAPHS BY
SELWYN PULLAN

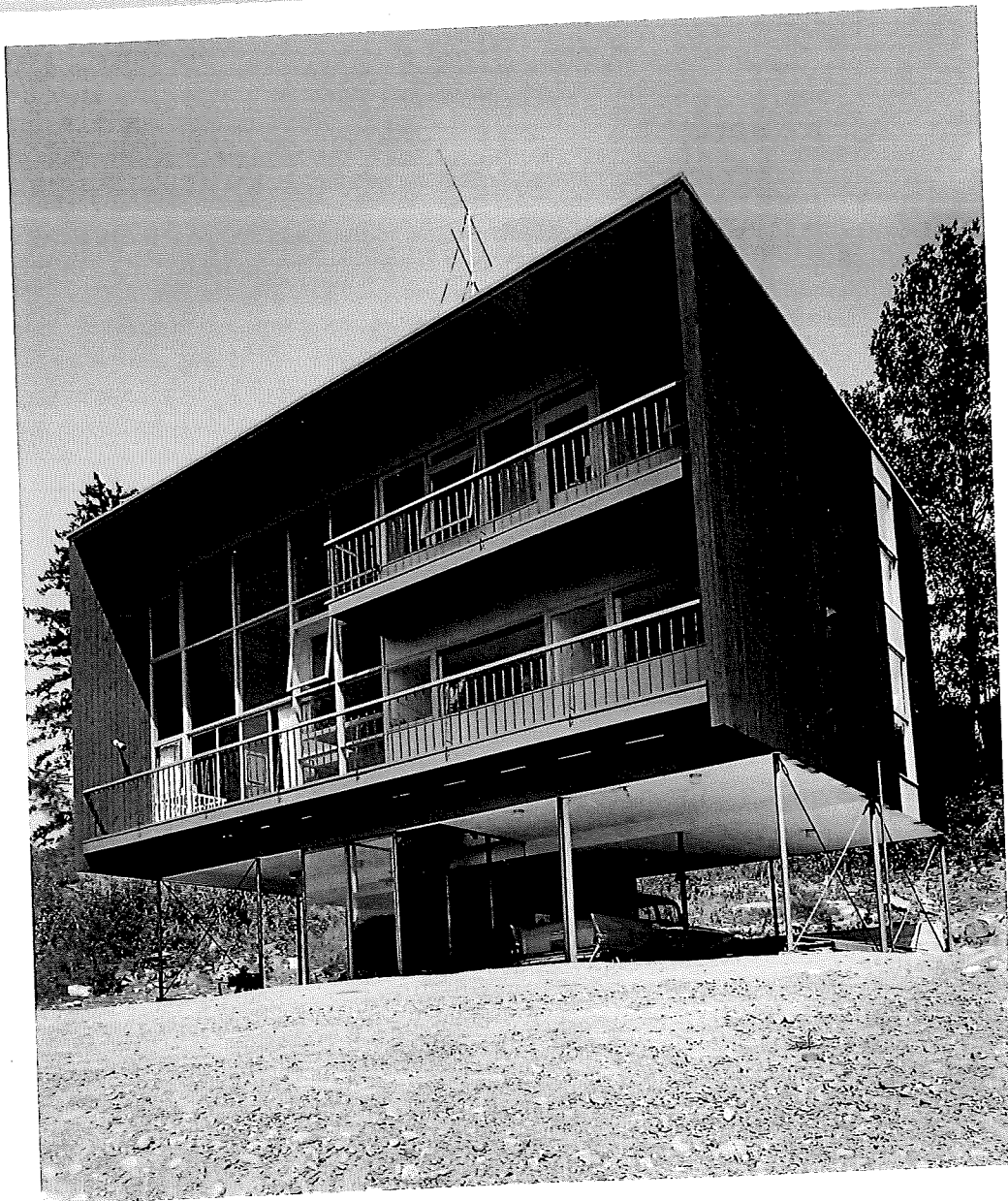
Under the mezzanine master bedroom which overlooks the living room is this conversation corner centered around a fireplace which features a decorative panel of Travertine marble. Same material is used on the cannelured hearth and as a top for the hi-fi cabinet on the left. Walls here are paneled in teak plywood. Graceful wide-seated chairs have ebony black frames and black and grey striped upholstery.



PHOTOGRAPHING
MID-CENTURY
WEST COAST MODERNISM

Selwyn Pullan





Poll Residence 1959
facing Poll Residence, Living Room 1959