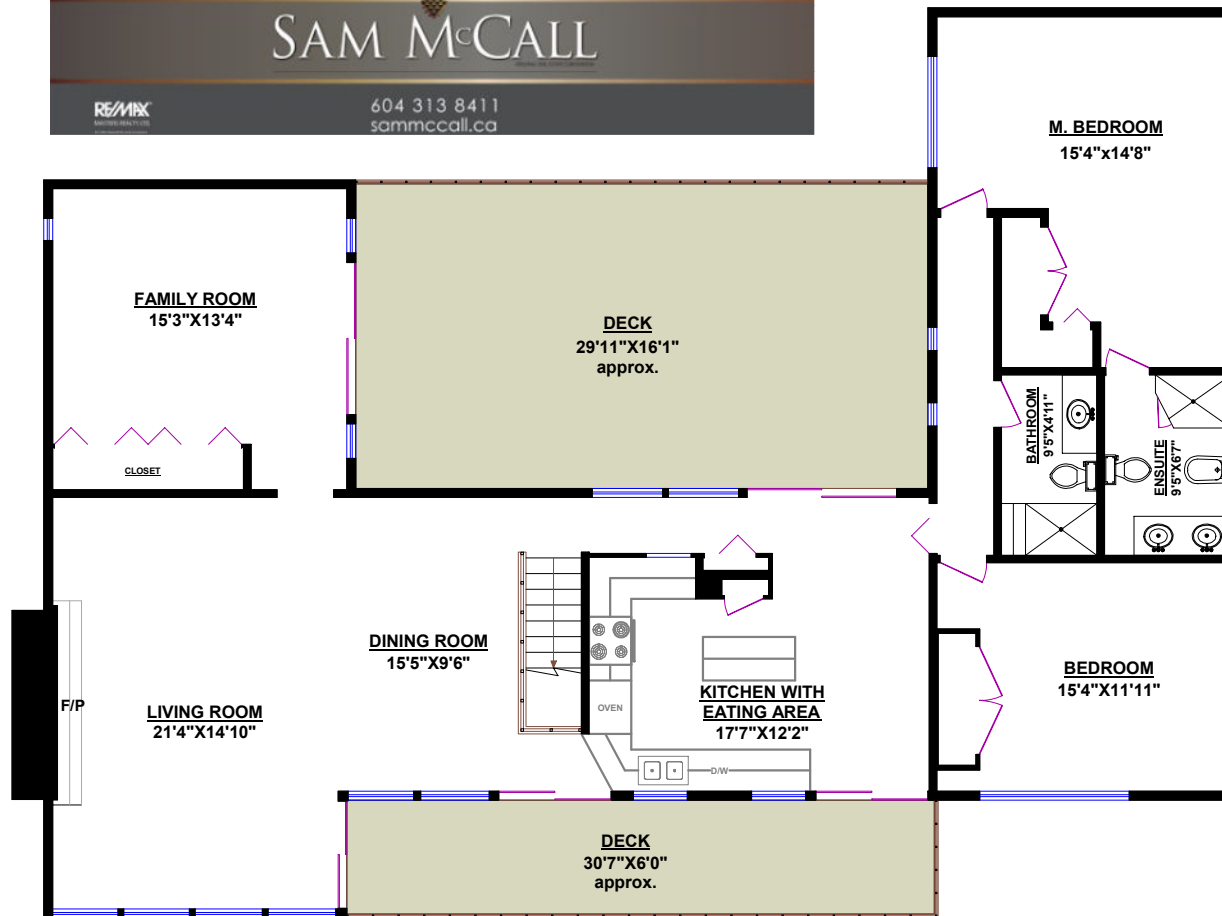


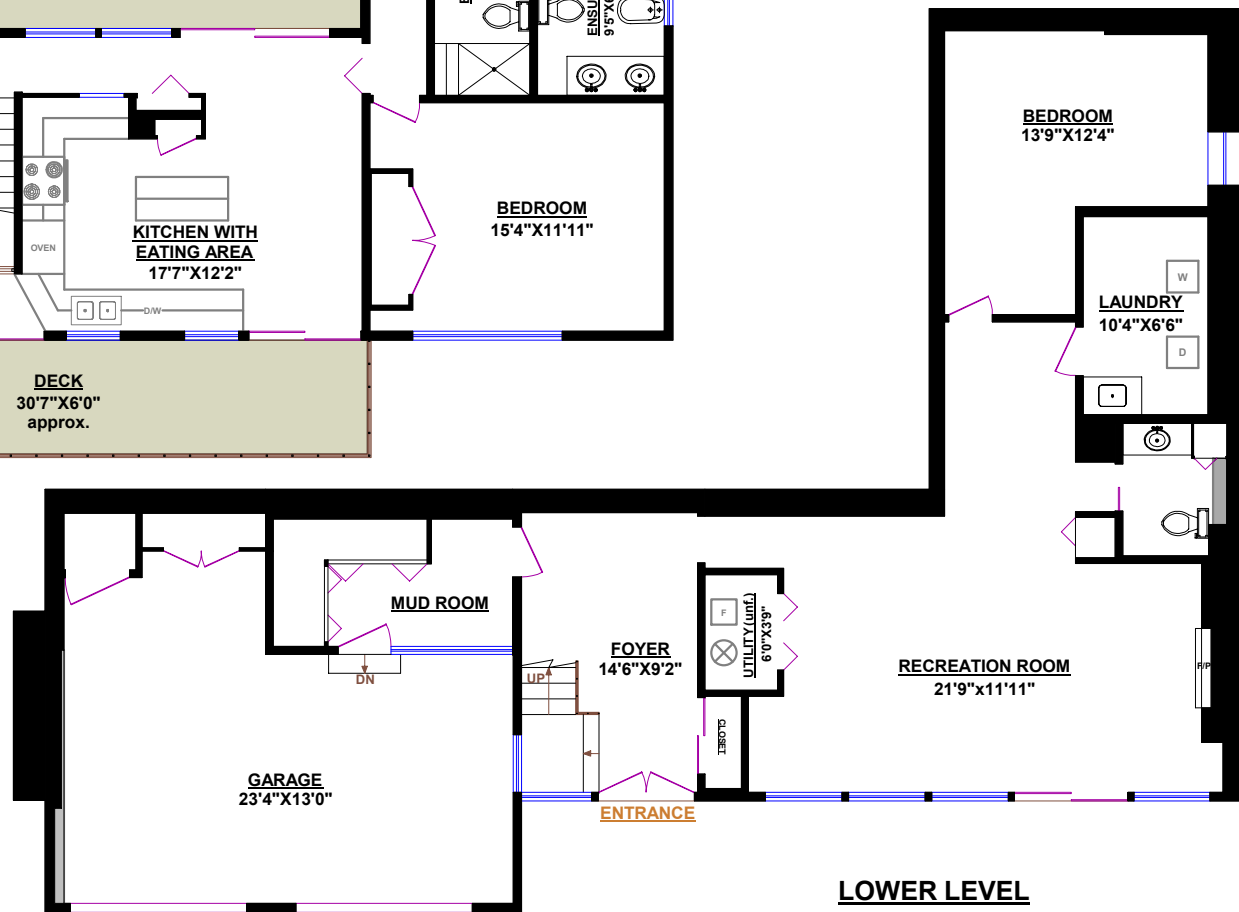
**2685 SKILIFT PLACE
WEST VANCOUVER**

TOTALS	
Main Floor (finished):	1,774 sq.ft.
Lower Level (finished):	1,109 sq.ft.
TOTAL FINISHED:	2,883 sq.ft.
Lower Level (unfinished):	23 sq.ft.
TOTAL UNFINISHED:	23 sq.ft.
GRAND TOTAL:	2,906 sq.ft.

OTHER AREAS:	
Garage:	428 sq.ft.



MAIN FLOOR



LOWER LEVEL

