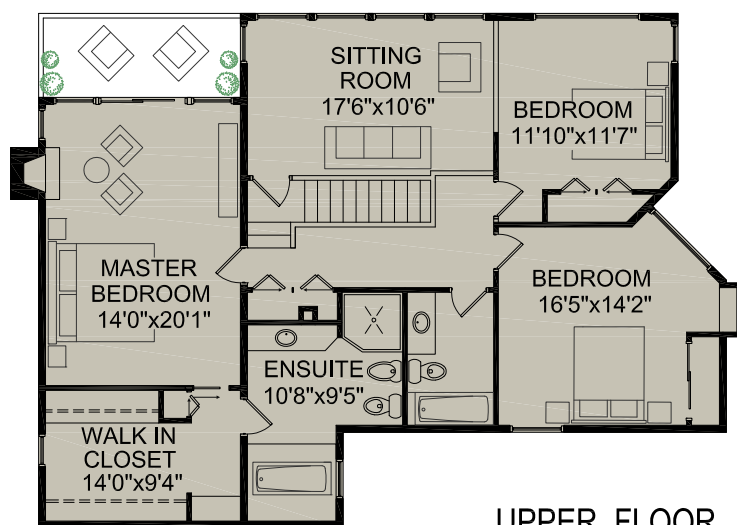
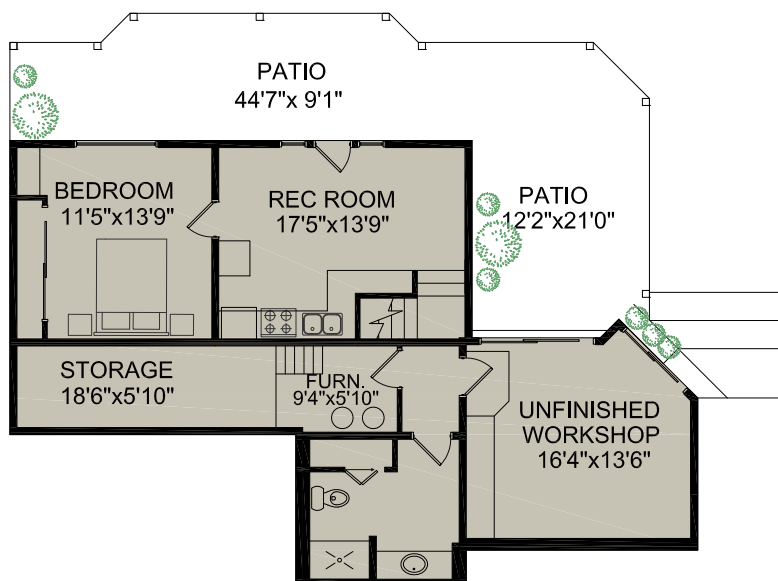


MAIN FLOOR



UPPER FLOOR



LOWER FLOOR

**RAY AND LYND A PROC**

**WWW.PROC.CA**

**604.644.4623**

**info@proc.ca**

## 2430 Palmerstone Avenue

**West Vancouver, BC**

|             |              |
|-------------|--------------|
| MAIN FLOOR  | 1,360 SQ.FT. |
| UPPER FLOOR | 1,470 SQ.FT. |
| LOWER FLOOR | 879 SQ.FT.   |

|                     |              |
|---------------------|--------------|
| FINISHED FLOOR AREA | 3,709 SQ.FT. |
| UNFINISHED FLOOR    | 201 SQ.FT.   |
| TOTAL FLOOR AREA    | 3,910 SQ.FT. |



Room dimensions are approximate. Presentation Purposes Only. Measurements to be verified by the buyer. [www.realestatefloorplansolutions.com](http://www.realestatefloorplansolutions.com)  
An independently owned and operated member of BRER Affiliates, Inc. Not affiliated with Prudential. Prudential marks used under license.



**NORTH**