

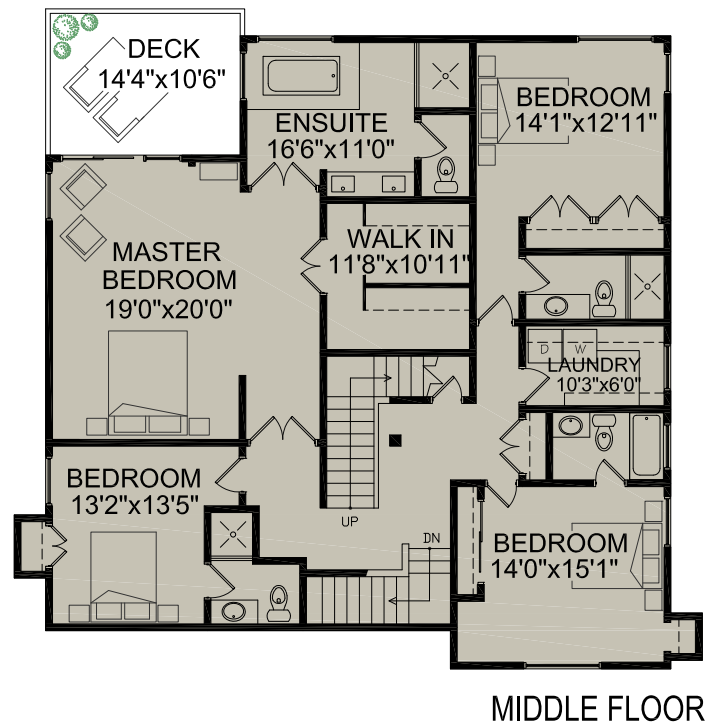
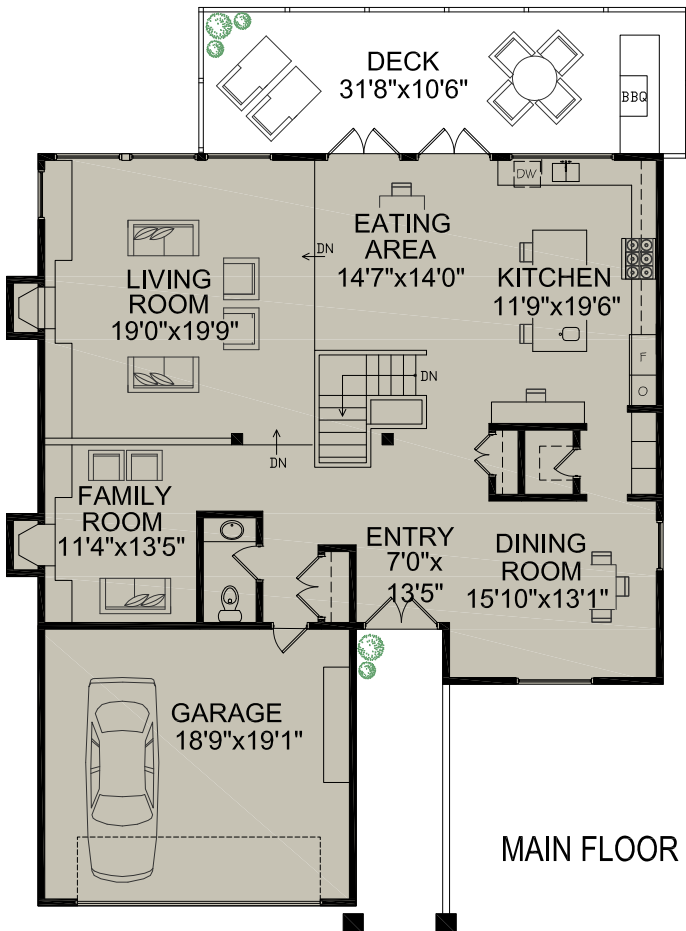
**RAY AND LYNDA PROC**

**WWW.PROC.CA**

**604.644.4623**

**info@proc.ca**

**5052 Pinetree Crescent  
West Vancouver, BC**



➤ MAIN FLOOR	1,736 SQ.FT.
➤ MIDDLE FLOOR	1,996 SQ.FT.
➤ LOWER FLOOR	1,960 SQ.FT.
<b>TOTAL FLOOR AREA</b>	<b>5,692 SQ.FT.</b>
PLUS	
➤ UNFINISHED STORAGE	1,294 SQ.FT.
➤ GARAGE	488 SQ.FT.



Room dimensions are approximate. Presentation Purposes Only. Measurements to be verified by the buyer. [www.realestatefloorplansolutions.com](http://www.realestatefloorplansolutions.com)  
An independently owned and operated member of BRER Affiliates, Inc. Not affiliated with Prudential. Prudential marks used under license.



**NORTH**