

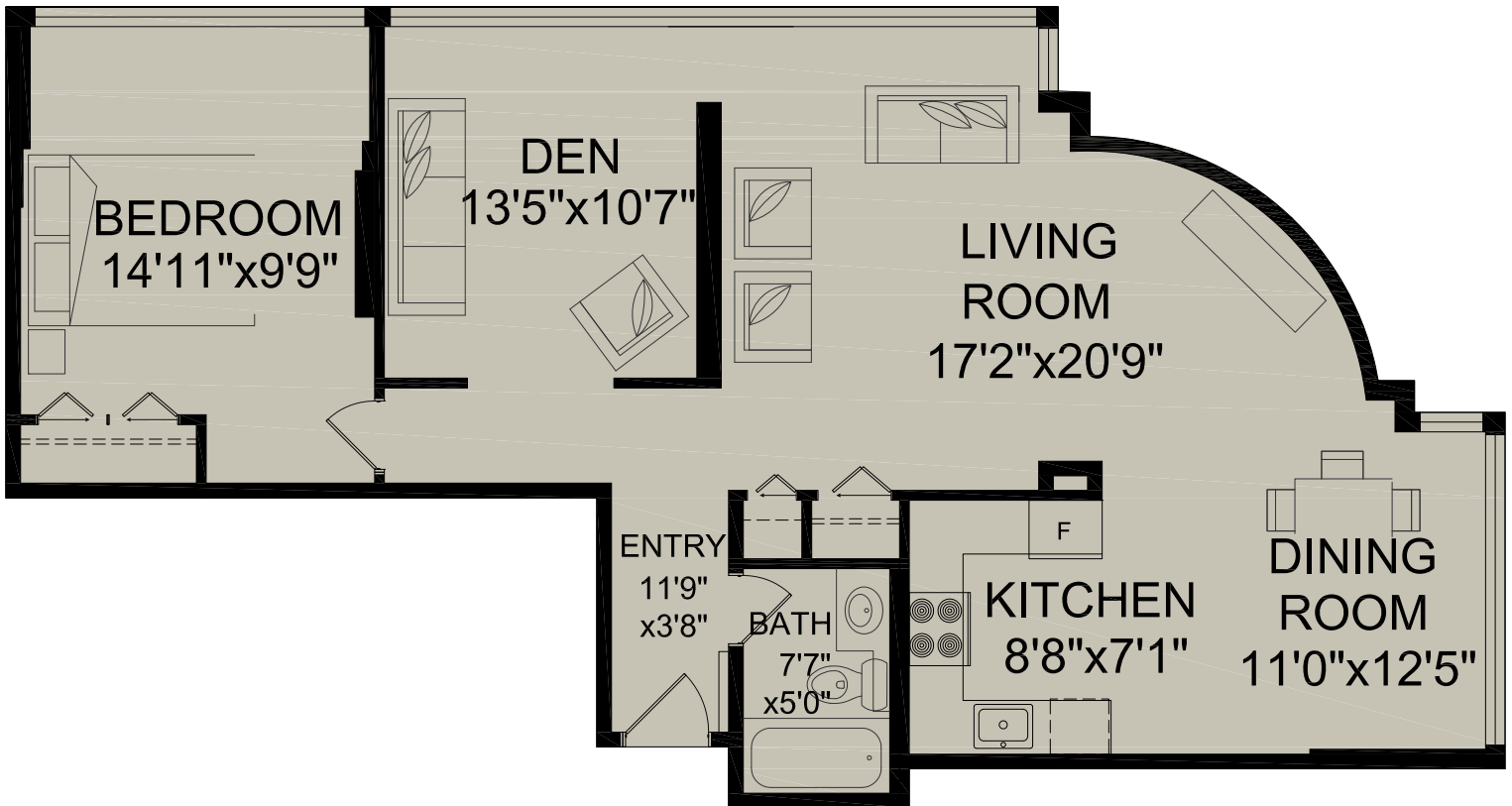
RAY AND LYNDA PROC

WWW.PROC.CA

604.644.4623

info@proc.ca

#501 - 650 16th Street
West Vancouver, BC



TOTAL FLOOR AREA 1,010 SQ.FT.



Room dimensions are approximate. Presentation Purposes Only. Measurements to be verified by the buyer. www.realestatefloorplansolutions.com
An independently owned and operated member of BRER Affiliates, Inc. Not affiliated with Prudential. Prudential marks used under license.