

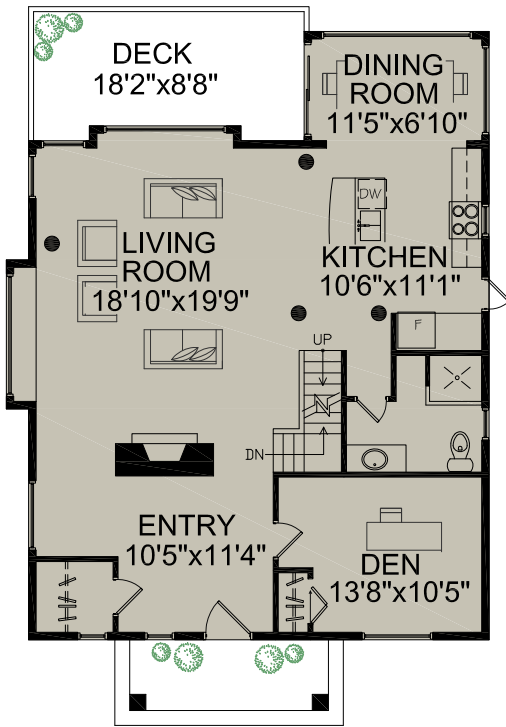
RAY AND LYNDA PROC

WWW.PROC.CA

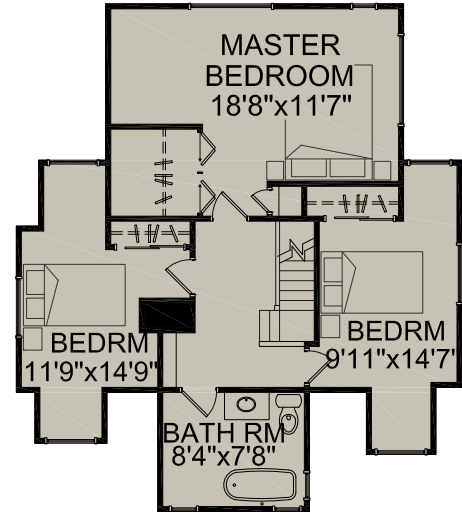
604.644.4623

info@proc.ca

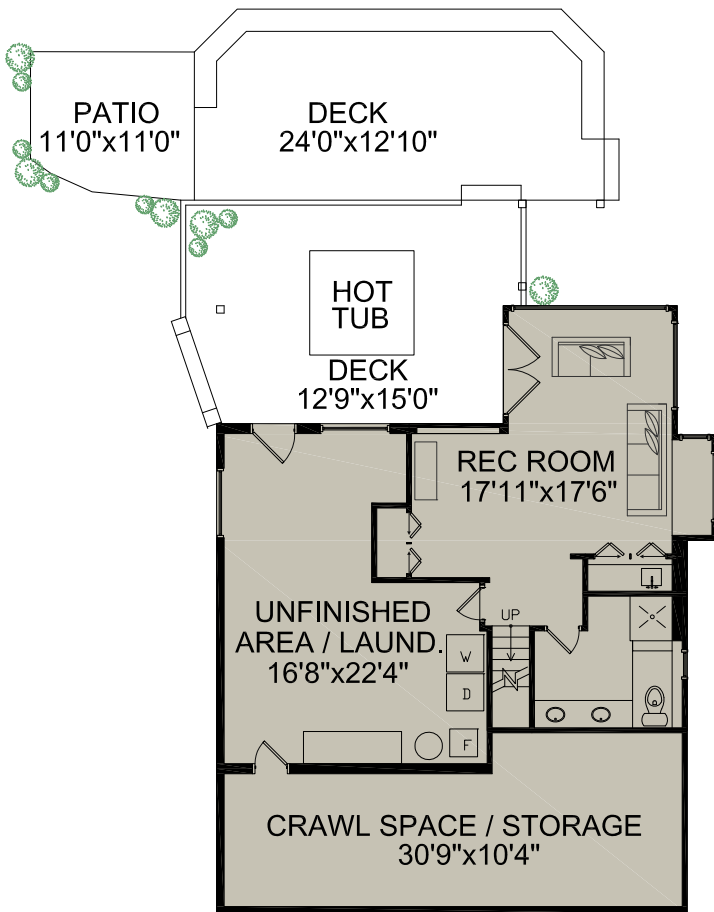
2604 Mathers Avenue  
West Vancouver, BC



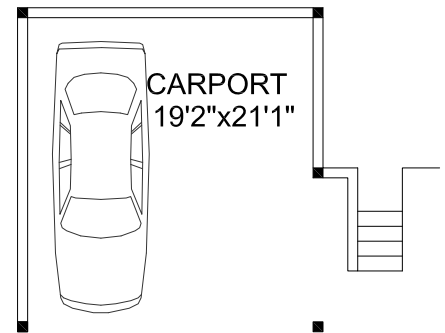
MAIN FLOOR



UPPER FLOOR



LOWER FLOOR



MAIN FLOOR	1,176 SQ.FT.
SECOND FLOOR	810 SQ.FT.
LOWER FLOOR	455 SQ.FT.
<b>TOTAL FLOOR AREA</b>	<b>2,441 SQ.FT.</b>

PLUS	
UNFINISHED AREA	703 SQ.FT.
CARPORT	404 SQ.FT.
DECKS	810+ SQ.FT.



Room dimensions are approximate. Presentation Purposes Only. Measurements to be verified by the buyer. [www.realestatefloorplansolutions.com](http://www.realestatefloorplansolutions.com)  
An independently owned and operated member of BRER Affiliates, Inc. Not affiliated with Prudential. Prudential marks used under license.

