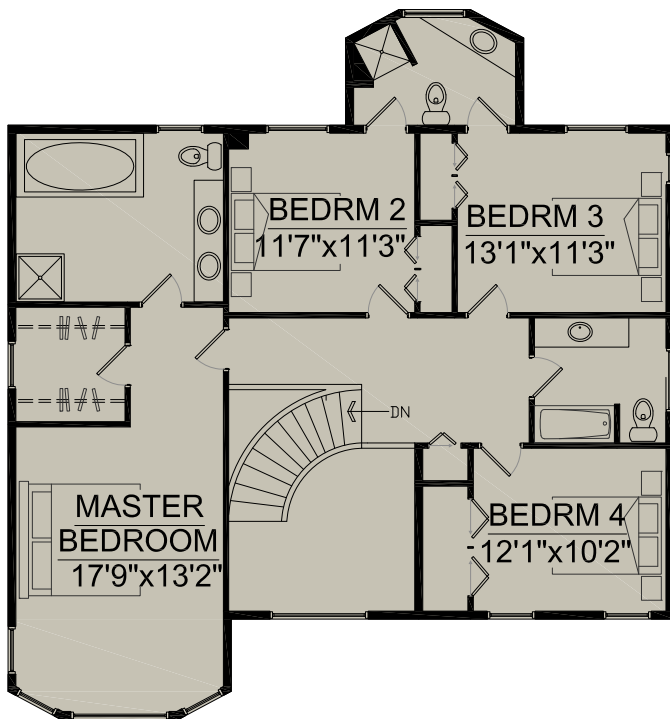


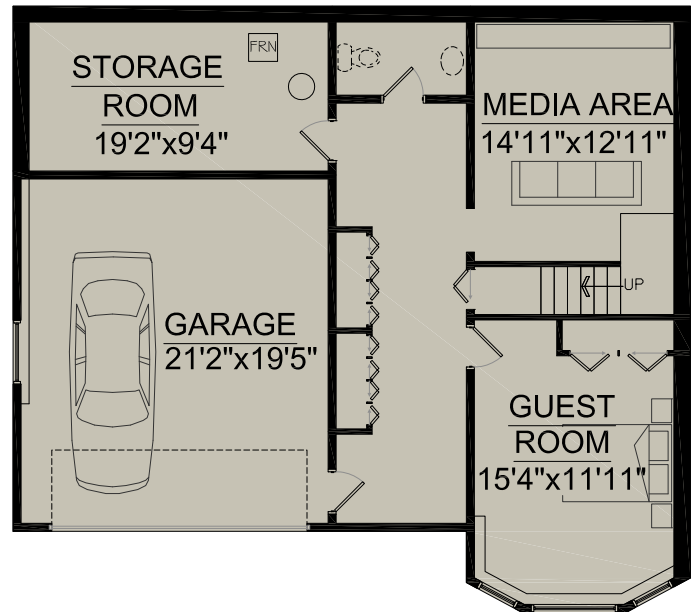
MAIN FLOOR

**RAY AND LYNDA PROC**  
 WWW.PROC.CA  
 604.644.4623  
 info@proc.ca

**4879 Northwood Drive  
 West Vancouver, BC**



UPPER FLOOR



LOWER FLOOR

UPPER FLOOR	1,249 SQ.FT.
MAIN FLOOR	1,511 SQ.FT.
LOWER FLOOR	867 SQ.FT.
TOTAL FLOOR AREA	3,627 SQ.FT.
PLUS GARAGE	440 SQ.FT.



Room dimensions are approximate. Presentation Purposes Only. Measurements to be verified by the buyer. [www.realestatefloorplansolutions.com](http://www.realestatefloorplansolutions.com)  
 An independently owned and operated member of BRER Affiliates, Inc. Not affiliated with Prudential. Prudential marks used under license.



NORTH