

21 SUNNYDENE CRESCENT, TORONTO



KELLY FULTON
SALES REPRESENTATIVE

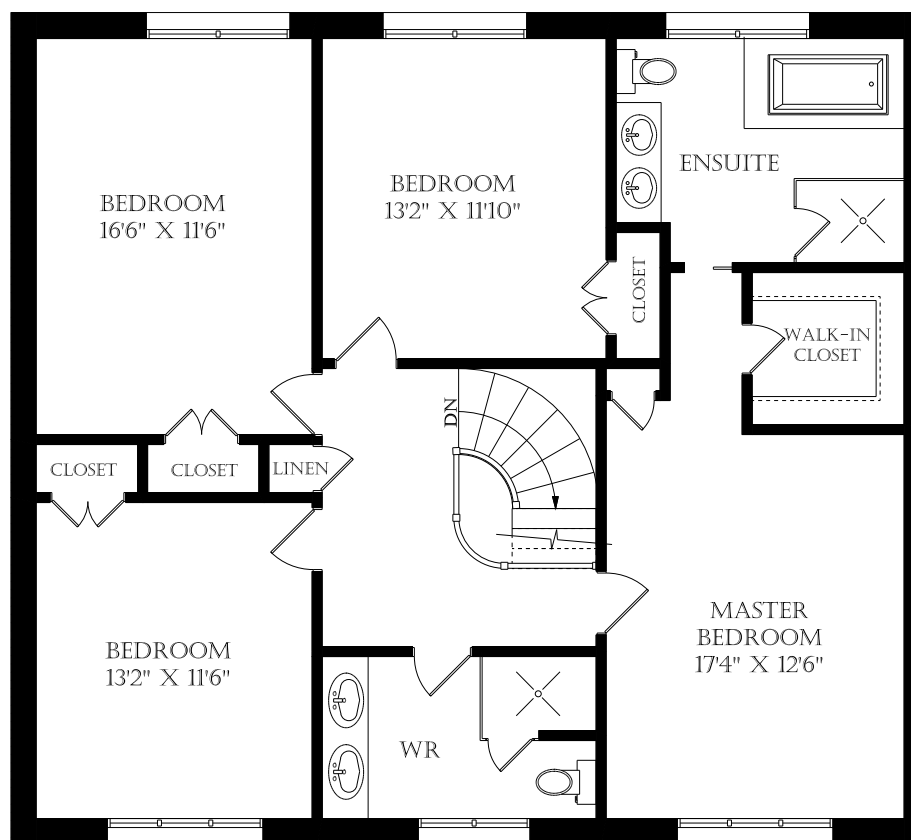
ROYAL LEPAGE REAL ESTATE SERVICES LTD.,
JOHNSTON & DANIEL DIVISION, BROKERAGE

(416) - 489 2121

cell 416.520.9655

web kellyfulton.ca

e mail kelly@kellyfulton.ca



SECOND FLOOR
1325 SQUARE FEET

January 23, 2014

Note: Although measurements and area believed to be accurate they should be considered approximate. This drawing was prepared by Plans4U for the sole benefit and use by the client. No third party may rely on this drawing without the receipt of reliance letter from Plans4U

PLANS4U

PlansForYou.ca/ info@plansforyou.ca /416.999.5096