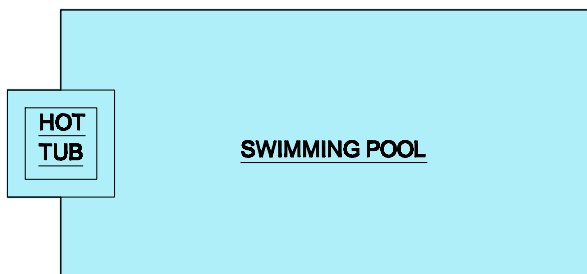


1301 Sinclair Street

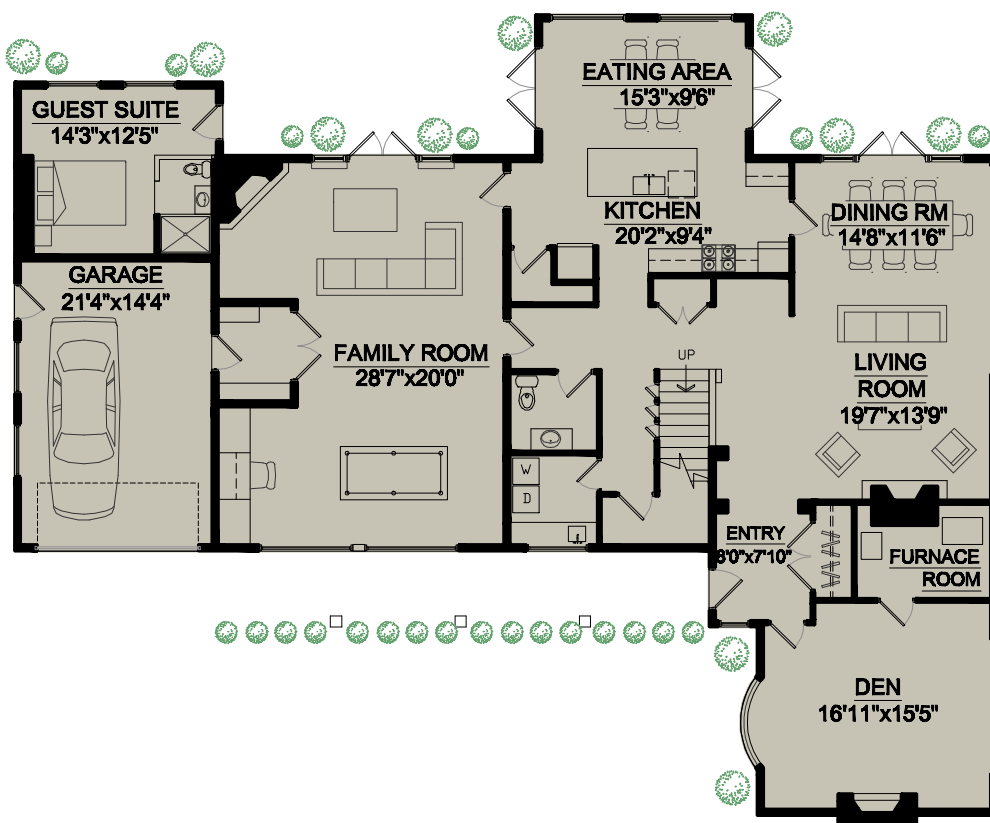
West Vancouver, BC

MAIN FLOOR	2,489 SQ.FT.
UPPER FLOOR	1,376 SQ.FT.
TOTAL FLOOR AREA	3,865 SQ.FT.
GARAGE	319 SQ.FT.
POOL SHED	120 SQ.FT.

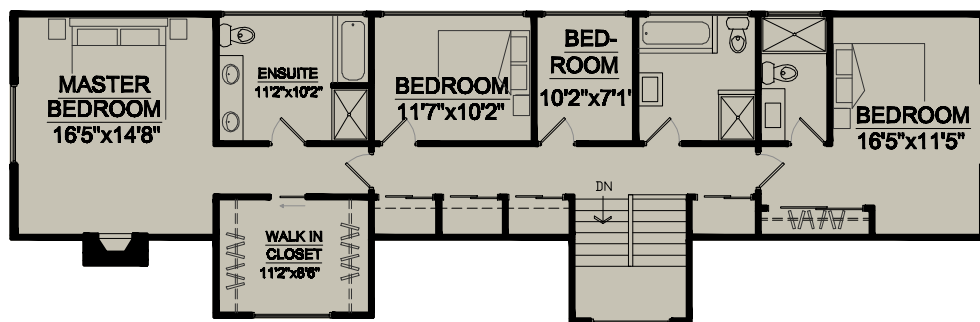


RAY AND LYND A P R O C

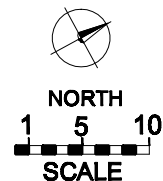
www.proc.ca



MAIN FLOOR



UPPER FLOOR



www.realestatefloorplansolutions.com
~ Room Dimensions are approximate ~
~ For presentation purposes only ~
~ Measurements to be verified by Buyer ~