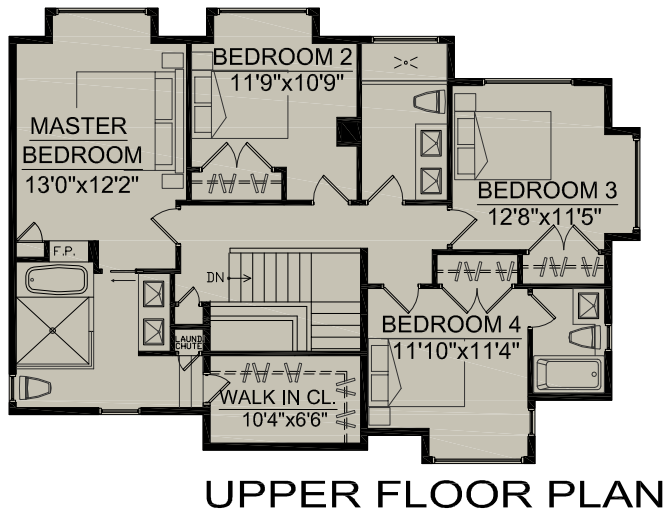


4199 Ranger Crescent

North Vancouver, BC

LOWER FLOOR	1,270 SQ.FT.
MAIN FLOOR	1,291 SQ.FT.
UPPER FLOOR	1,151 SQ.FT.
TOTAL FLOOR AREA	3,712 SQ.FT.
 GARAGE	 424 SQ.FT.



RAY AND LYNDA PROC
www.proc.ca

