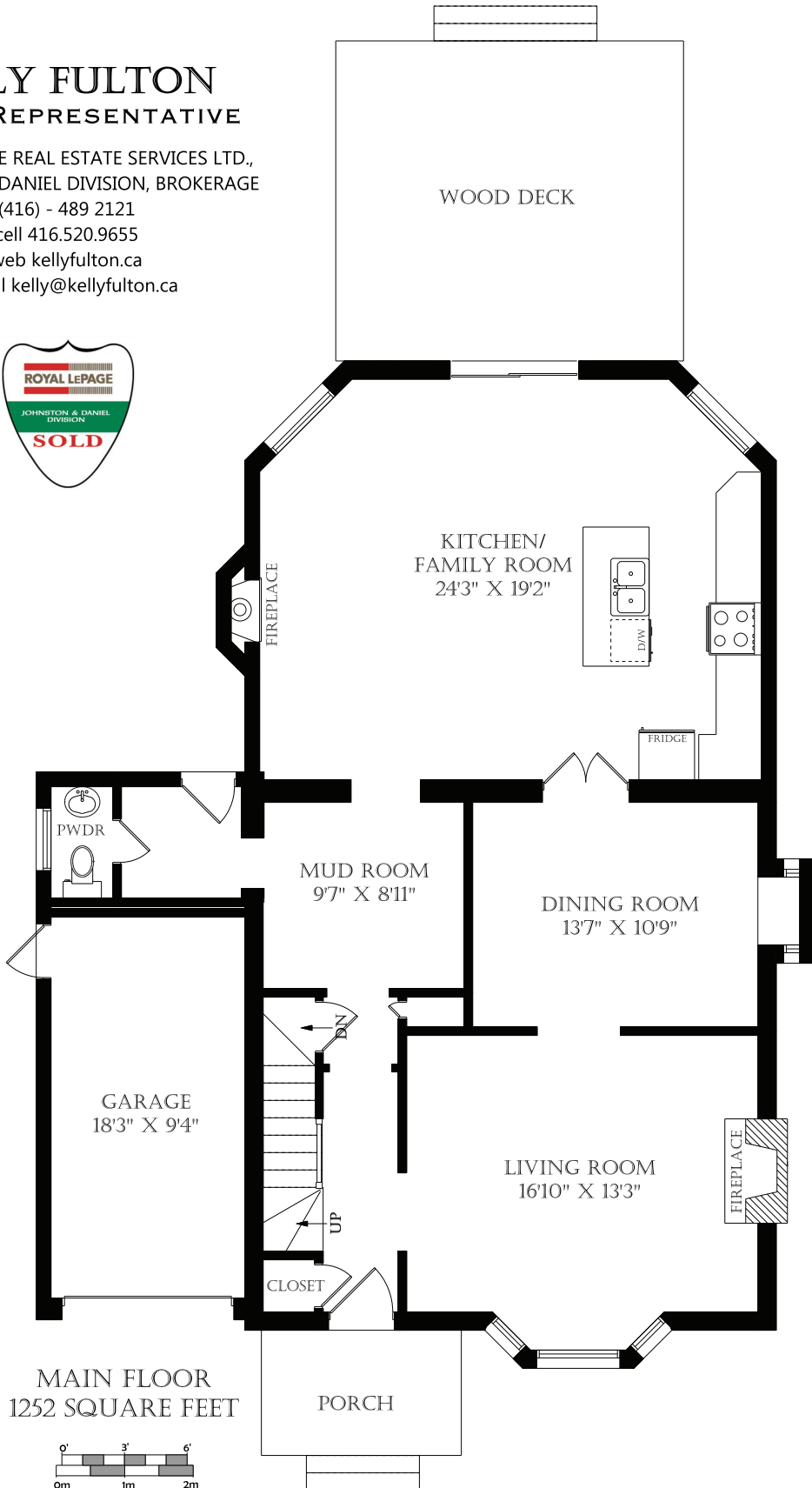


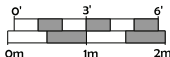
# 170 DINNICK CRESCENT

## KELLY FULTON SALES REPRESENTATIVE

ROYAL LEPAGE REAL ESTATE SERVICES LTD.,  
JOHNSTON & DANIEL DIVISION, BROKERAGE  
(416) - 489 2121  
cell 416.520.9655  
web [kellyfulton.ca](http://kellyfulton.ca)  
e mail [kelly@kellyfulton.ca](mailto:kelly@kellyfulton.ca)



MAIN FLOOR  
1252 SQUARE FEET



September 27, 2013

Note: Although measurements and area believed to be accurate they should be considered approximate. This drawing was prepared by Plans4U for the sole benefit and use by the client. No third party may rely on this drawing without the receipt of reliance letter from Plans4U