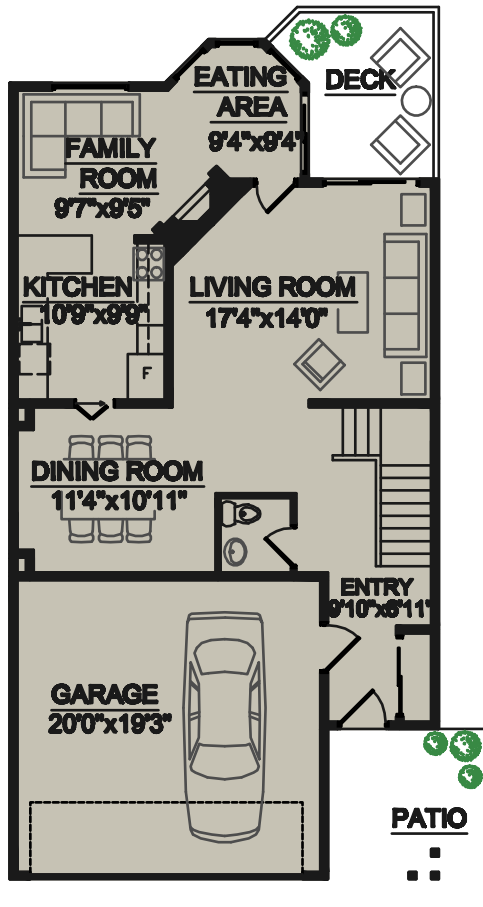


1158 Strathaven Drive

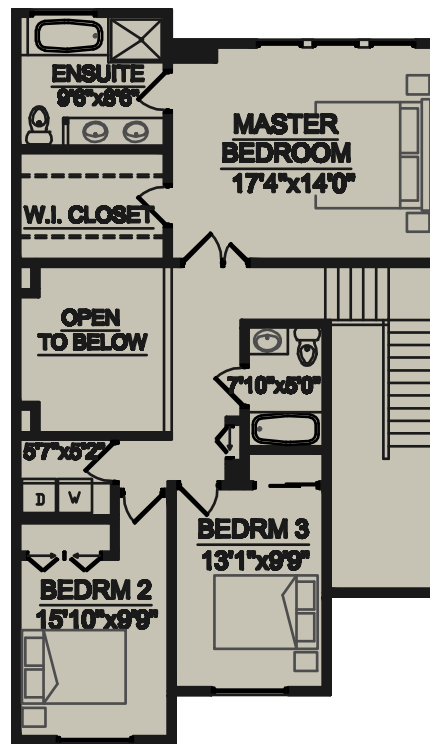
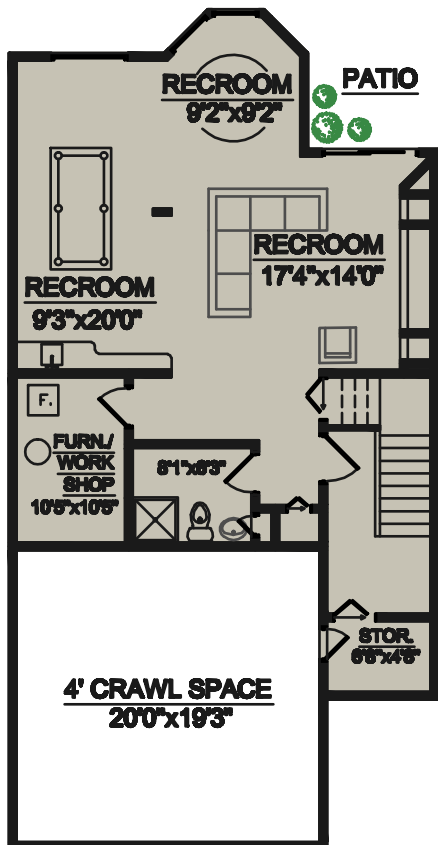
North Vancouver, BC

LOWER FLOOR	942 SQ.FT.
MAIN FLOOR	965 SQ.FT.
UPPER FLOOR	982 SQ.FT.
TOTAL FLOOR AREA	2,889 SQ.FT.
GARAGE	410 SQ.FT.



RAY AND LYNDA PROC

www.proc.ca



UPPER FLOOR

www.realestatefloorplansolutions.com
 ~ Room Dimensions are approximate ~
 ~ Measurements to be verified by Buyer ~