

RAY AND LYNDA PROC

www.proc.ca

# 1425 25th Street

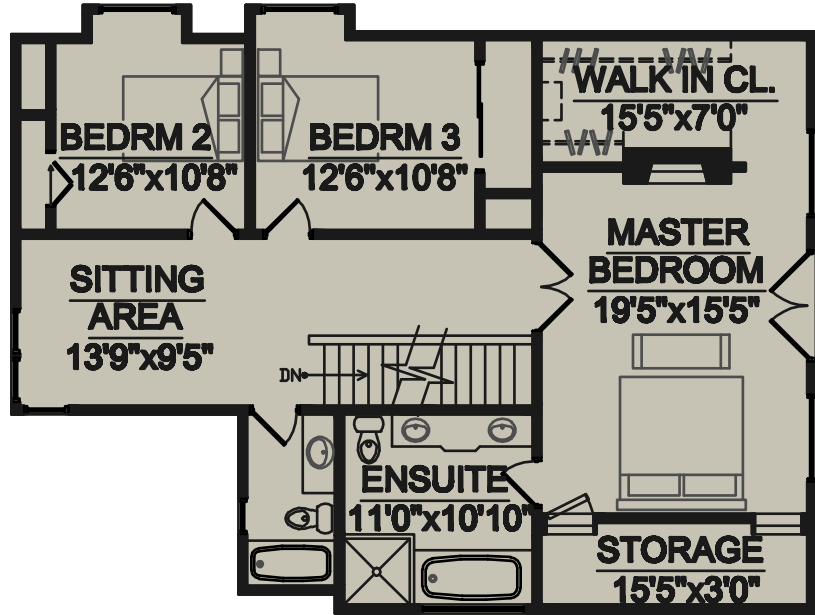
West Vancouver, BC

UPPER FLOOR → 1,304 SQ.FT.  
MAIN FLOOR → 1,587 SQ.FT.  
LOWER FLOOR → 1,020 SQ.FT.  
TOTAL FLOOR AREA → 3,911 SQ.FT.

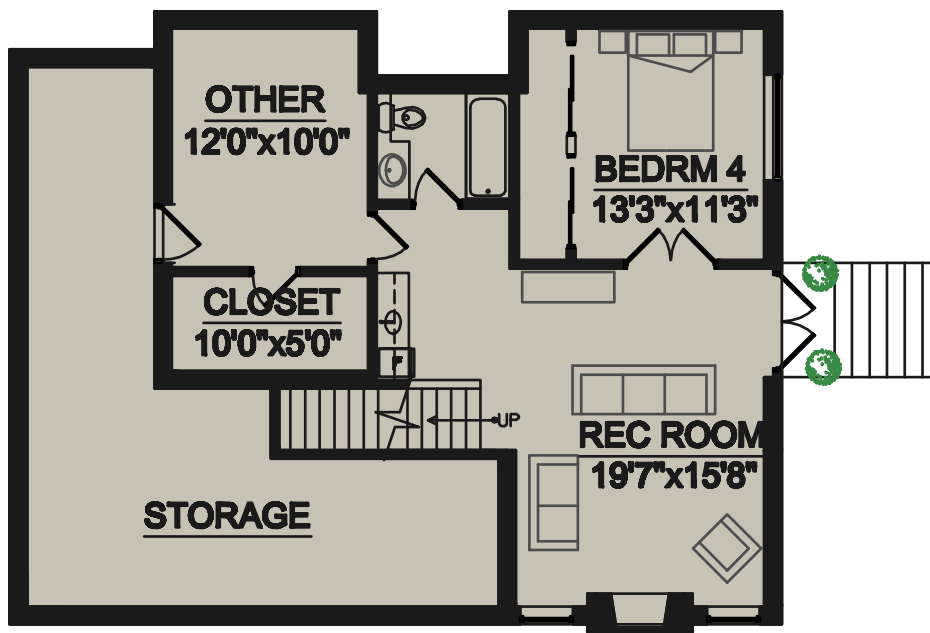


**Prudential**  
Sussex Realty

STORAGE → 482 SQ.FT.  
GARAGE → 530 SQ.FT.



UPPER FLOOR



LOWER FLOOR