

ReachMaster FS95 For Sale 2025

Reason: Retiring from Innovative Reach, Inc. rental of atrium manlift
Purchased: New from ReachMaster 2008
Extra features: Most capable 95' atrium manlift

- 8.5' width setup with 10-degree side to side reach
- Outriggers with hinged joints (no longer available through manufacturer)
- Continuous rotation (no longer available through manufacturer)
- Key to operate without boom in cradle
- Key to slow movements as if boom were extended (never provided)
- Single person basket

Versatility: For use

- Each outrigger has four positions and outrigger hinged joints to morph into most situations
- Able to raise itself 4.5' to load onto a trailer, level the manlift or enter an empty pool

Wheel Atrium Manlift: Little special preparation for indoor movements and designed for commercial floor loading of 100lb/sqft (track systems can damage floors if not properly prepared)

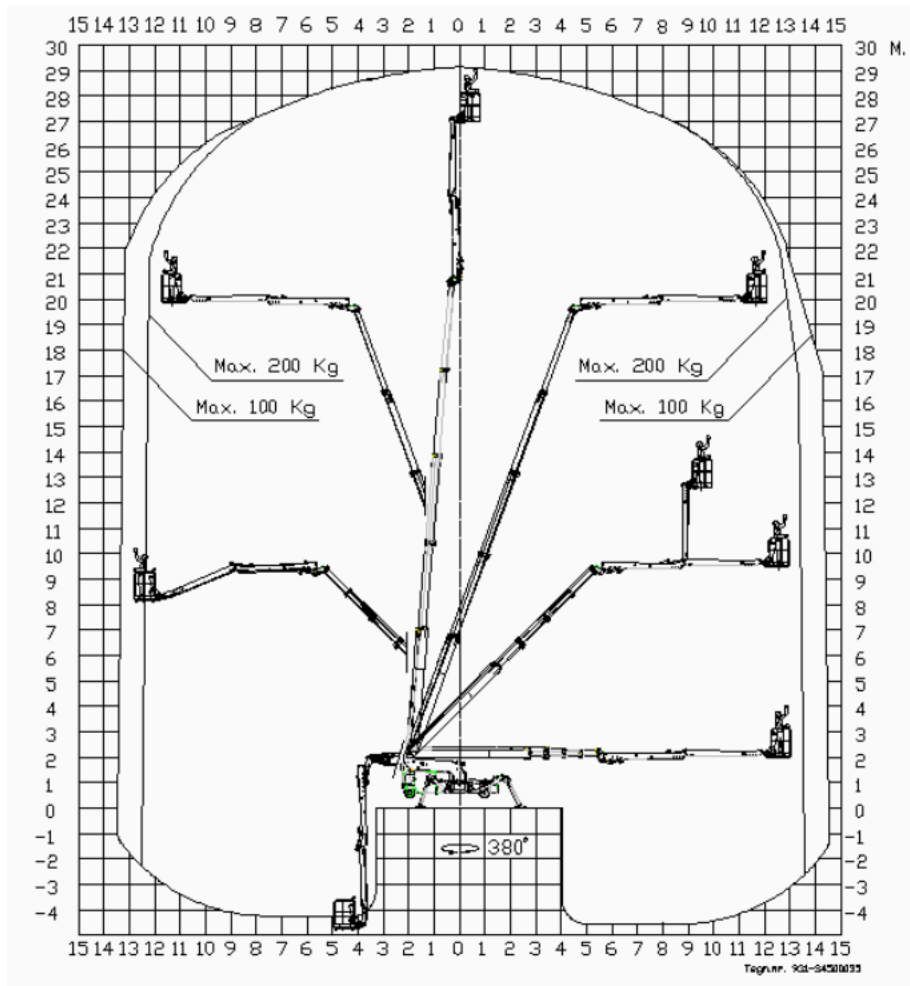
Current condition: Very Good
Outrigger seals have been replaced several times over the years
There are no known leaks that will cause a problem.

Manlift was certified every year from 2008 until 2020 during the Pandemic. Certification will be part of the sale process.

I rented this Atrium Manlift though the Mid-West and East-Coast from 2008 though today.

See below for all specifications.

Reach diagram FALCON FS 95



Technical data FALCON FS 95 ReachMaster

Manufactured 2008 with serial# 8026; 555 hrs
as of 8/30/25

Factory Contact: Robert J Parkerson Ruthmann ReachMaster (713) 855-2608

Standard equipment

Working height: 95.2 ft

Basket height: 89.2 ft

Turret rotation: 380°

Double jib arm: 2x180°

Jib arm (2x 10 ft): 20 ft

Basket (aluminum): Basket load: (WxL:2.6ftx4.6ft) 440 lbs

Rotation basket: Optional

Measurements (Transport position):

Total height: 6.5 ft

Total length: 20.7 ft

Total width: 2.6 ft

Inclination / sloping: 5°/9%

Weight 8785 lbs

Standard performance and features:

- Access through a 2.6 ft wide and 6.6 ft high door opening
- Automatic safety and stability system ensures optimum outreach and maximum safety
- 3-position outrigger system allows for individual setting of each outrigger
- Full hydraulic 200° double jib 20 ft arm system with individual movement of both jibs
- Working height, up to 95 ft in minutes and 380° turret rotation, with integrated stop
- Due to its unique outrigger design, the Falcon FS95 can self-load on trucks or trailers
- Proportional control of all functions via joysticks
- Manual pump system for lowering of the basket in case of emergency
- 110V chargeable battery power system
- Two-person basket (WxL:2.6ftx4.6ft)

Optional equipment that are included:

- 360° continuous turret rotation
- Outriggers with hinged joints
- 2-wheel drive system (inclination / sloping up to 10°/18%)
- Narrow outrigger setting 8.5' and able to reach up to 95' with 10 degrees left or right swing
- Key-switch for driving lift with boom raised (needed to move lift over seats or pews)
- Key-switch to slow lift motions down as if the boom is out more than half to allow ground operator finer control
- 110 V power supply in the basket
- White non-marking tires
- Slope alarm
- One person Basket (aluminum) (WxL:2.6ftx2.6ft)
- Setup to install Honda Generator
- Air and water supply in Basket
- Sliding tracks for the outriggers (needed if outriggers needed to raise lift for loading or unloading)

Innovative Reach, Inc.
Philip Koch
5505 Twin Knolls Dr
Cedar Rapids, IA 52411

319-900-5995
philip@innovativereach.com

Pictures



Stowed Atrium Manlift. FS95



Stowed Atrium Manlift. FS95



Opened Atrium Manlift. FS95



Can morph to most situations. Each outrigger has four positions and outriggers have hinged joints.



Narrow 8.5' setting reaching up 95'



Narrow 8.5' setting on different levels of support.



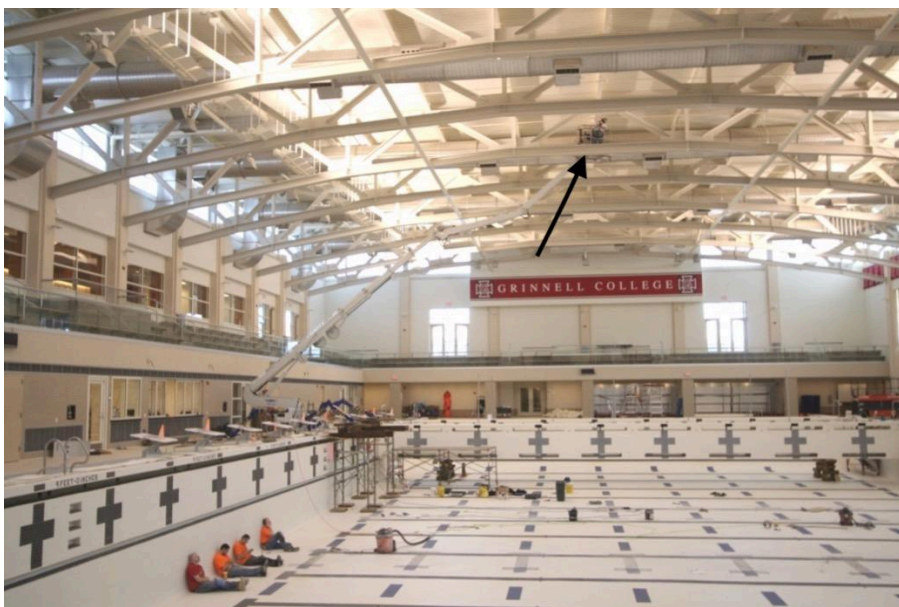
Narrow 8.5' setting fitting between structure.



Can be put into an empty pool



Pool deck was not big enough for the outriggers, so shore scaffolding was assembled to support the lift.



See the worker top center above an Olympic-sized pool.