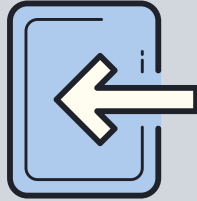


COVID SAFETY PLAN

FIRST FRIENDS AND FIRST KIDS

TOUCHLESS CHECK-IN

A staff member will check you into the computer system and the classroom.

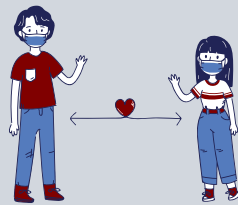


DESIGNATED DOORS ENTRANCE & EXIT

Entrance and exit doors will be clearly marked to encourage social distancing.

CLEAN & DISINFECTED

Surfaces, high frequency touch points, toys, books, and supplies will be continuously disinfected and extensively cleaned.

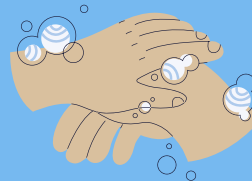


LIMITED CLASS SIZE

Limited class size allows for activities that encourage social distancing.

HANDWASHING STATIONS

Children's hands will be washed when entering the classroom and periodically throughout the morning. Hand sanitizer will also be available in each classroom.



STAFF SCREENING

Staff, teachers, and volunteers will be screened, including temperature checks, before entering the suite. Anyone who does not meet screening requirements will not be permitted in the suite.

MASKS

All staff, teachers, and volunteers will be wearing masks. Families and children 10 and over are encouraged to wear masks as well.



GLOVES, SMOCKS, & SHOE COVERS

To protect everyone in the suite, staff, teachers, and volunteers will utilize personal protective equipment when necessary.