



HEATHER GARDENS, GU14

KIER CHARLES

SURREY • BERKSHIRE • HANTS

HEATHER GARDENS, GU14

SOLD stc WITH KIER.
A FABULOUS FAMILY HOME ARRANGED OVER THREE FLOORS.

Positioned in a quiet location within the ever sought after area of Southwood, Farnborough. Offering easy reach to the M3 and close proximity to the Town Centre and Mainline train station (London 42 mins).

The property enjoys 1,883 sq ft with five bedrooms, two bathrooms to the first and second floor. The ground floor has three reception rooms, conservatory and kitchen/breakfast room. A utility, WC and integral garage also benefits this family home.

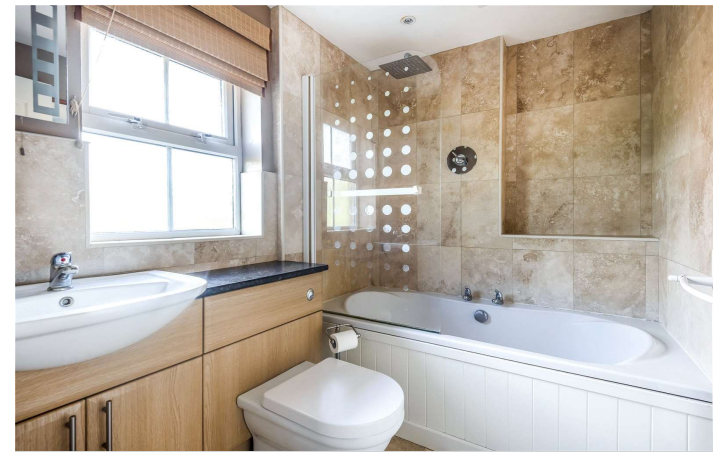
To fully appreciate the space, location and layout of this property a viewing is recommended.

- FIVE BEDROOMS
- TWO BATHROOMS
- FOUR RECEPTION ROOMS
- KITCHEN/BREAKFAST ROOM
- SOUGHT AFTER SCHOOLS NEARBY
- SOUTHERLY FACING GARDEN
- ARRANGED OVER THREE FLOORS

PROPERTY INFORMATION

Postcode | **GU14 0RU**
Tenure | **Freehold approximately 0years**
Price | **£575,000**
Viewing | **By appointment with Kier Charles**





Heather Gardens, Farnborough, GU14

Approximate Area = 1720 sq ft / 160 sq m (includes garage)
 Limited Use Area(s) = 163 sq ft / 15 sq m
 Total = 1883 sq ft / 175 sq m
 For identification only - Not to scale



Floor plan produced in accordance with RICS Property Measurement Standards incorporating International Property Measurement Standards (IPMS2 Residential). © nichecom 2020. Produced for Kier Charles Property Services Limited. REF: 653824



CONTACT INFORMATION:

Surrey: 01276 949789
 Berkshire: 01344 513789
 Hampshire: 01252 213789

info@kiercharles.co.uk

KIER CHARLES

SURREY • BERKSHIRE • HANTS