



ASPECT HOUSE
1 & 2 Bedroom Apartments



HATFIELD
RISE
HATFIELD

CGIs are indicative only and elevations are subject to change, external finishes and features may vary.



ASPECT
HOUSE

HATFIELD RISE SITE PLAN



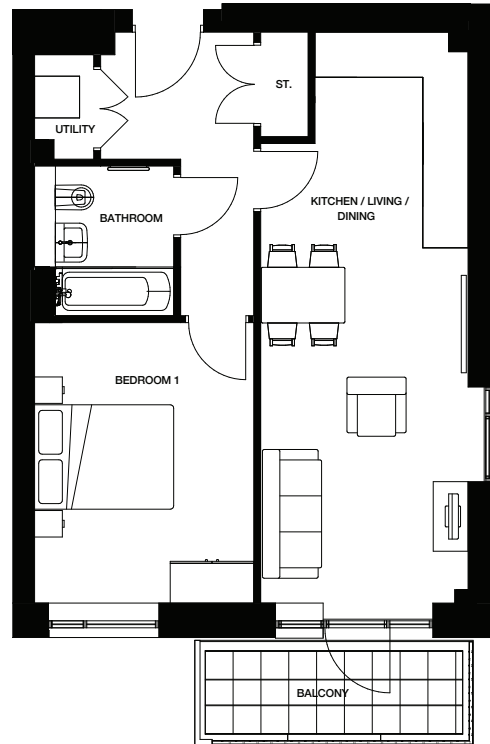
- CREST HOUSE**
2 bedroom apartments
4 retail units to ground floor
- ASPECT HOUSE**
1 and 2 bedroom apartments
4 retail units to ground floor
- PROSPECT HOUSE**
1 and 2 bedroom apartments
1 retail unit to ground floor
- RIDGE HOUSE**
1 and 2 bedroom apartments
2 retail units to ground floor
- 3 BEDROOM HOUSES**
High View / Harrier Way
- BUTTE HOUSE**
Affordable rent
5 retail units to ground floor
- ESKER HOUSE**
Shared ownership
3 retail units to ground floor
- PARKING SPACES**
- RECYCLING BANK**
- REFUSE COLLECTION POINT**
- GRASS / PLANTING**

This development layout plan depicts the intended layout and development mix at the time of going to press, however those intentions may change and a purchaser cannot rely on the details shown on this plan. Landscaping shown is only indicative. Any queries should be raised through the conveyancing process in the usual way.

Correct at time of print

ASPECT HOUSE
APARTMENT TYPE 4

1 bedroom apartment
50.7sqm | 546sqft



Dimensions

Living/Dining/Kitchen 8206mm x 2981 26'11" x 9'9"

Bedroom 1 4031mm x 3149mm 13'2 x 10'4"

Plot numbers

D1-01-02

D1-02-02

D1-03-02

D1-04-02

Floor

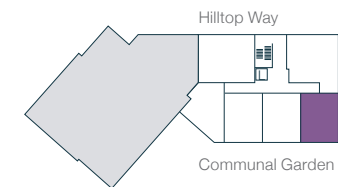
01

02

03

04

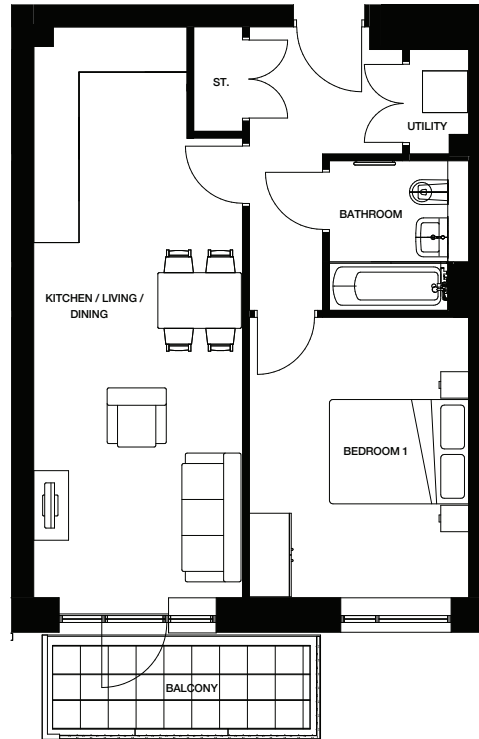
Floors 1-4



Customers should note the computer generated image shown is an illustration of Aspect House. External finishes, landscaping and roofing of final building may vary. Dimensions stated are maximum room measurements and within 50mm (2") but should not be used as a basis for furnishings, furniture or appliance spaces etc. Dimensions for such purposes must be verified against actual site measurements. Please check individual plot details with our sales team. ST denotes Store. L denotes Lift.

ASPECT HOUSE
APARTMENT TYPE 5

1 bedroom apartment
50.8sqm | 547sqft



Dimensions

Living/Dining/Kitchen 8206mm x 3000mm 26'11" x 9'10"

Bedroom 1 4031mm x 3150mm 13'2" x 10'4"

Plot numbers

D1-01-03

D1-02-03

D1-03-03

D1-04-03

Floor

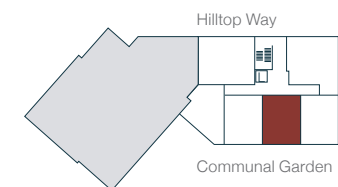
01

02

03

04

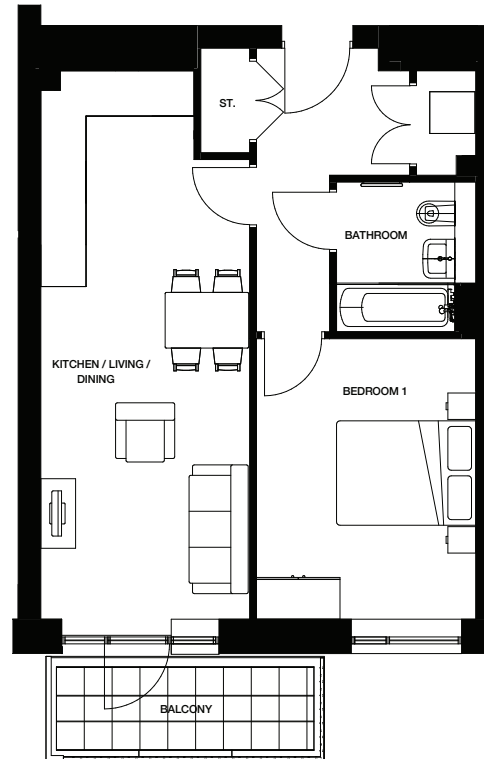
Floors 1-4



Customers should note the computer generated image shown is an illustration of Aspect House. External finishes, landscaping and roofing of final building may vary. Dimensions stated are maximum room measurements and within 50mm (2") but should not be used as a basis for furnishings, furniture or appliance spaces etc. Dimensions for such purposes must be verified against actual site measurements. Please check individual plot details with our sales team. ST denotes Store. L denotes Lift.

ASPECT HOUSE
APARTMENT TYPE 6

1 bedroom apartment
50.4sqm | 542sqft



Dimensions

Living/Dining/Kitchen 7881mm x 3000mm 25'10" x 9'10"

Bedroom 1 4031mm x 3150mm 13'2" x 10'4"

Plot numbers

D1-01-04

D1-02-04

D1-03-04

D1-04-04

Floor

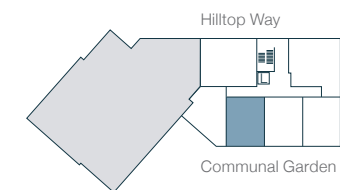
01

02

03

04

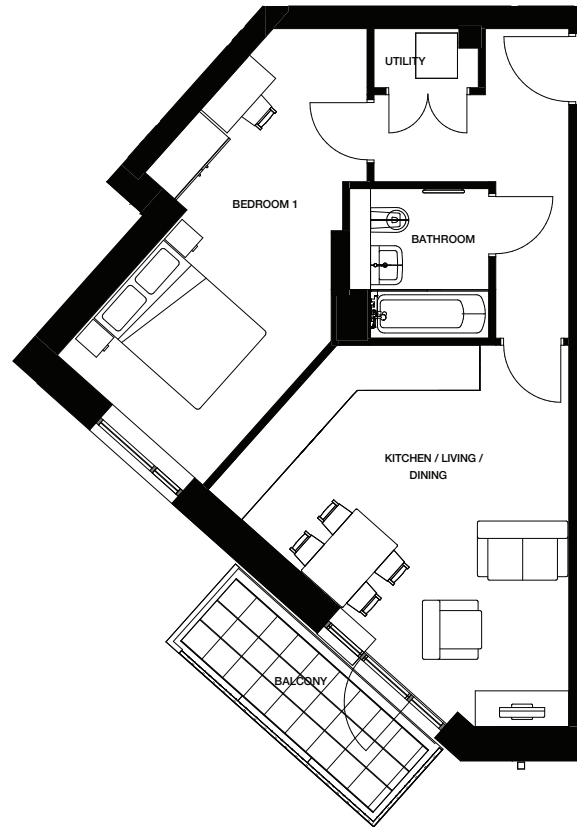
Floors 1-4



Customers should note the computer generated image shown is an illustration of Aspect House. External finishes, landscaping and roofing of final building may vary. Dimensions stated are maximum room measurements and within 50mm (2") but should not be used as a basis for furnishings, furniture or appliance spaces etc. Dimensions for such purposes must be verified against actual site measurements. Please check individual plot details with our sales team. ST denotes Store. L denotes Lift.

ASPECT HOUSE
APARTMENT TYPE 7

1 bedroom apartment
50.4sqm | 543sqft



Dimensions

Living/Dining/Kitchen 5481mm x 5195 18'0" x 17'1"

Bedroom 1 6375mm x 2801mm 20'11" x 9'2"

Plot numbers

D1-01-05

D1-02-05

D1-03-05

D1-04-05

Floor

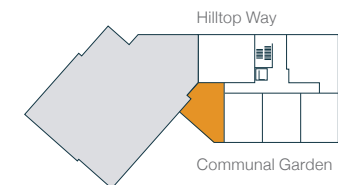
01

02

03

04

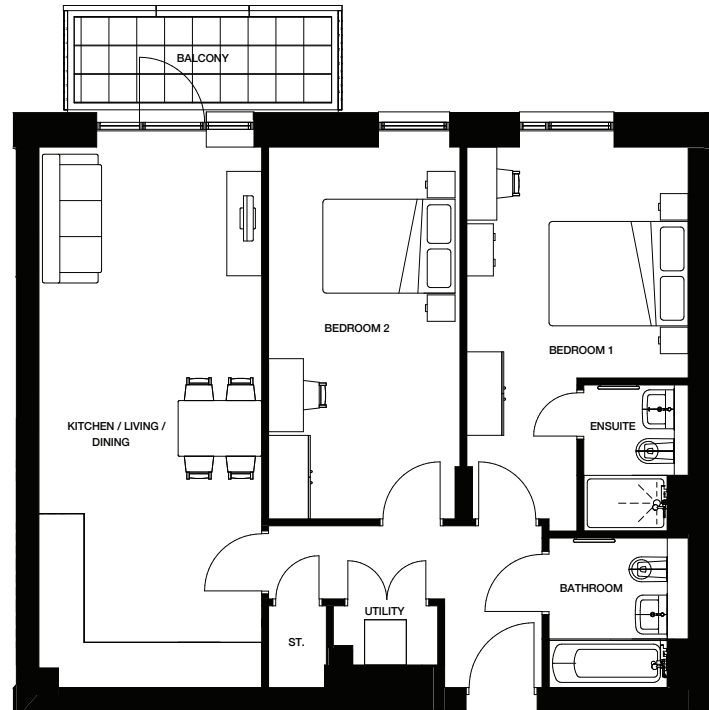
Floors 1-4



Customers should note the computer generated image shown is an illustration of Aspect House. External finishes, landscaping and roofing of final building may vary. Dimensions stated are maximum room measurements and within 50mm (2") but should not be used as a basis for furnishings, furniture or appliance spaces etc. Dimensions for such purposes must be verified against actual site measurements. Please check individual plot details with our sales team. ST denotes Store. L denotes Lift.

ASPECT HOUSE
APARTMENT TYPE 12

2 bedroom apartment
71.9sqm | 774sqft



Dimensions

Living/Dining/Kitchen 7769mm x 3200mm 25'6" x 10'6"

Bedroom 1 5344mm x 3180mm 17'6" x 10'5"

Bedroom 2 5344mm x 2750mm 17'6" x 9'

Plot numbers

D1-01-06

D1-02-06

D1-03-06

D1-04-06

Floor

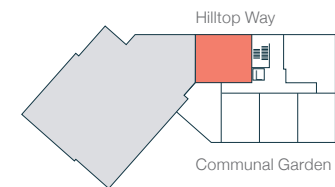
01

02

03

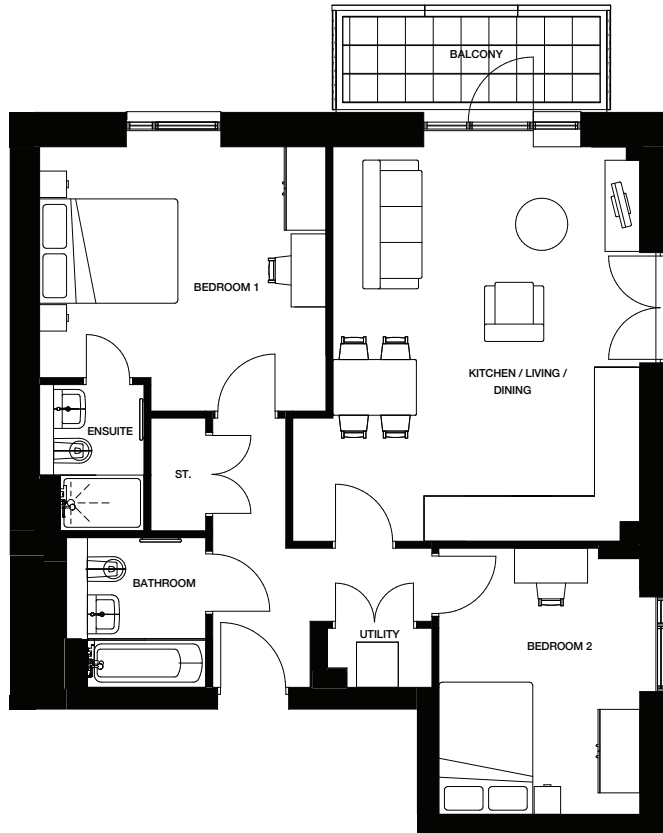
04

Floors 1-4



Customers should note the computer generated image shown is an illustration of Aspect House. External finishes, landscaping and roofing of final building may vary. Dimensions stated are maximum room measurements and within 50mm (2") but should not be used as a basis for furnishings, furniture or appliance spaces etc. Dimensions for such purposes must be verified against actual site measurements. Please check individual plot details with our sales team. ST denotes Store. L denotes Lift.

ASPECT HOUSE
 APARTMENT TYPE 11
 2 bedroom apartment
 71.4sqm | 769sqft



Dimensions

- Living/Dining/Kitchen** 5669mm x 4410mm 18'7" x 14'5"
- Bedroom 1** 4115mm x 3318mm 13'6" x 10'10"
- Bedroom 2** 3825mm x 2888mm 12'6" x 9'5"

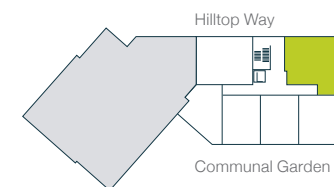
Plot numbers

- D1-01-01
- D1-02-01
- D1-03-01
- D1-04-01

Floor

- 01
- 02
- 03
- 04

Floors 1-4



Customers should note the computer generated image shown is an illustration of Aspect House. External finishes, landscaping and roofing of final building may vary. Dimensions stated are maximum room measurements and within 50mm (2") but should not be used as a basis for furnishings, furniture or appliance spaces etc. Dimensions for such purposes must be verified against actual site measurements. Please check individual plot details with our sales team. ST denotes Store. L denotes Lift.





SPECIFICATION

APARTMENTS

Lovell Homes come with a high specification included as standard, because we know the small things can make a big difference. To guarantee a quality finish for your home we have partnered with some of the most sought-after brands in interiors

Kitchen

- Plaza matt finish kitchen (Cashmere or Porcelain)
- Concrete effect laminate worktop with matching upstand
- Stainless steel splashback
- Stainless Steel 1.5 bowl sink
- Zanussi double oven
- Electrolux ceramic hob
- Zanussi built in extractor hood
- Zanussi integrated fridge freezer
- Zanussi dishwasher
- Zanussi free standing washer/dryer in utility cupboard
- Chrome downlighters
- LED under cupboard lighting

Bathroom

- Ceramic tiles applied around sanitaryware up to cill height (and returned)
- Ideal Standard white sanitaryware with chrome brassware
- Shaver socket
- Thermostatic shower
- Heated towel rail
- Chrome downlighters

En-Suites

- Ceramic tiles. Fully tiled shower cubicle and splash back to wash hand basin
- Ideal Standard white sanitaryware with chrome brassware
- Thermostatic shower
- Towel rail
- Chrome downlighters

Internal and decoration

- White paint to walls and ceiling
- White satinwood finish to internal joinery
- Weathered Oak Amtico flooring to hallway, kitchen, lounge and bathroom/WC/en-suite
- Carpet to all other rooms
- Double glazed Upvc windows

External

- Bike store
- Recycling Bin Enclosure
- Secure parking space to all apartments

Electrical and Security

- Video/Audio Access Control
- BT connection points to lounge and master bedroom
- TV aerial outlet and Sky Q to lounge
- Combination boiler
- Smoke detector
- Carbon monoxide detector
- 10 year NHBC Warranty

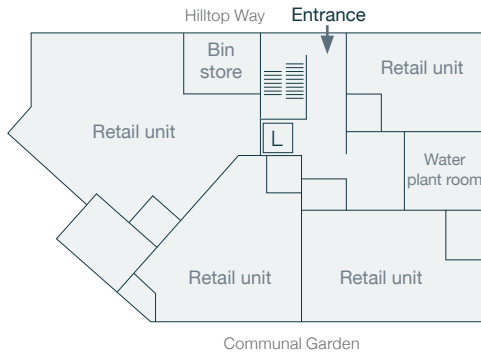
ASPECT HOUSE BLOCK PLANS



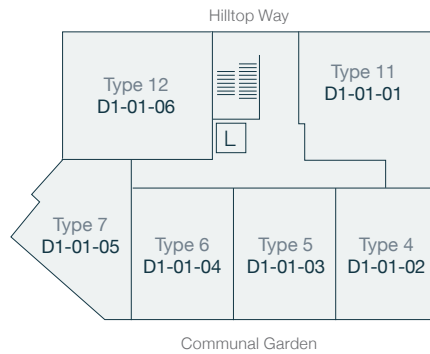
HATFIELD RISE

HATFIELD

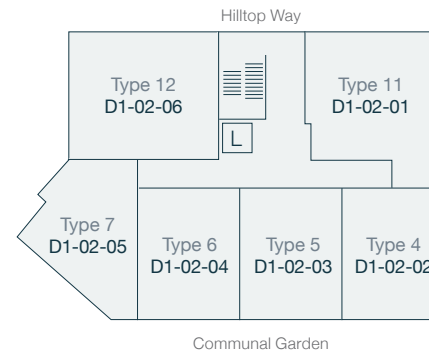
Ground Floor



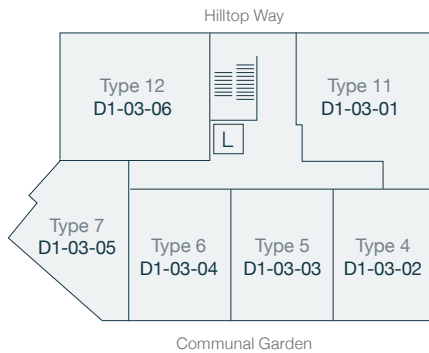
First Floor



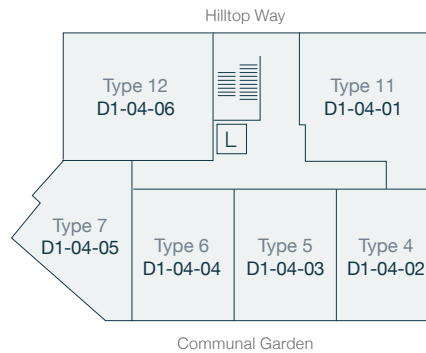
Second Floor



Third Floor



Fourth Floor



T: 020 3993 3558
hatfieldrise.co.uk



**LOVELL
HOMES**

A MORGAN SINDALL GROUP COMPANY