



SOLSTRAND, STATION ROAD, GU19

KIER CHARLES

SURREY • BERKSHIRE • HANTS

SOLSTRAND, STATION ROAD, GU19

VIEW WITH KIER CHARLES SURREY.

A DELAPIDATED DETACHED HOME WITH FULL PLANNING PERMISSION TO DEMOLISH AND BUILD THREE DETACHED FAMILY HOMES.

LAUNCH DAY FEBRUARY 11TH BY APPOINTMENT ONLY.

Kier Charles land department shall be showcasing this great opportunity to acquire this site with full planning permission granted via Surrey Heath Borough Council.

Final offers shall be received close of business Monday 13th February for our client to review.

Contact our Surrey branch to arrange a tour of the site on the 11th February via appointment only.

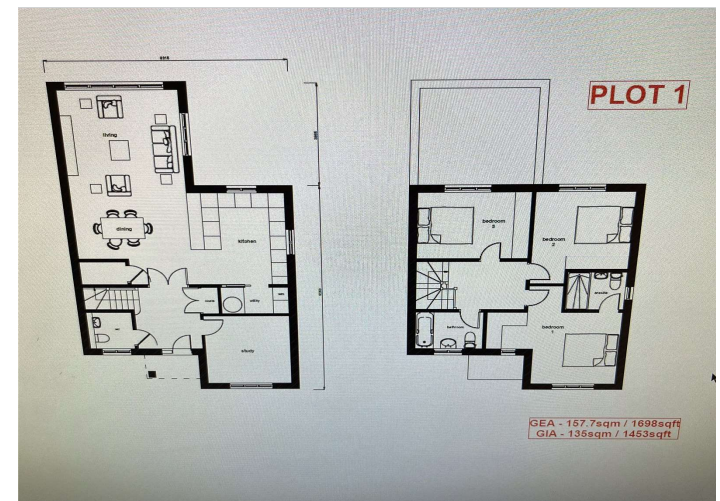
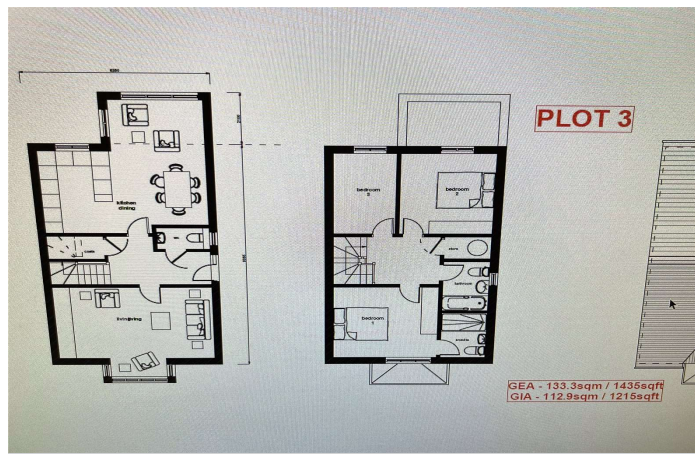
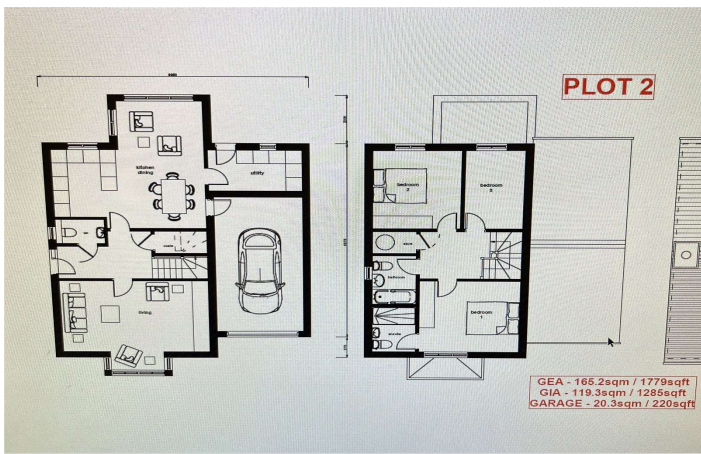
Appointments shall be staggered.

- **DEVELOPMENT OPPORTUNITY**
- **FULL PLANNING GRANTED**
- **THREE DETACHED UNITS**
- **CLOSE TO TRAIN LINE**
- **WONDERFUL VILLAGE LOCATION**
- **FINAL OFFERS 13TH FEBRUARY**

PROPERTY INFORMATION

Postcode | **GU19 5AS**
Tenure | **Freehold**
Price | **£850,000**
Viewing | **By appointment with Kier Charles**





CONTACT INFORMATION:

Surrey: 01276 949789

Berkshire: 01344 513789

Hampshire: 01252 213789

info@kiercharles.co.uk

KIER CHARLES

SURREY • BERKSHIRE • HANTS