



TEKELS COURT, GU15

KIER CHARLES

SURREY • BERKSHIRE • HANTS

TEKELS COURT, GU15

VIEW WITH KIER CHARLES SURREY.

Plot 8, Two Bedroom Garden Apartment.

Welcome to Dunmar Gardens, a selection of Ten stylish homes within the heart of the ever sought after Tekels Park.

A private estate of luxurious homes in the centre of Camberley, Surrey offering easy reach to major road, rail links to London and highly sought after Schools.

These wonderful homes have been traditionally built to a high standard and offering a blend of stylish Juliet balconies, multi fuel burners, high ceilings and stunning interiors.

The properties range from two-bedroom ground floor garden apartments to Four bedroom detached family homes offering southerly aspect gardens and ample living accommodation.

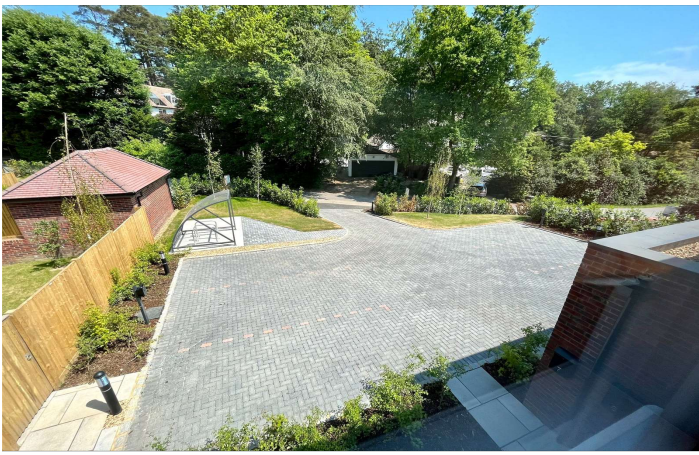
They are a short walk to the highly commended Tekels Park estate offering wonderful walks, peace, and tranquillity. (Fees apply for membership rights) To fully appreciate these sought-after, high-quality homes and personal tour with Kier Charles is highly recommended.

- **TEN LUXURIOUS HOMES**
- **HIGHLY SOUGHT AFTER PRIVATE ESTATE**
- **STUNNING VIEWS AND WALKS**
- **CLOSE TO TOWN CENTRE**
- **EXCELLENT SCHOOL CATCHMENT**
- **COMPLETION SPRING 2023**
- **GARAGES ON CERTAIN PLOTS**
- **ALLOCATED & DRIVEWAY PARKING**
- **SOUTH FACING GARDENS**
- **ZERO GROUND RENT**
- **250 YEAR LEASE**
- **ESTIMATED £1500 MAINTENANCE CHARGE**

PROPERTY INFORMATION

Postcode | **GU15 2LF**
Tenure | **Leasehold**
Price | **£450,000**
Viewing | **By appointment with Kier Charles**

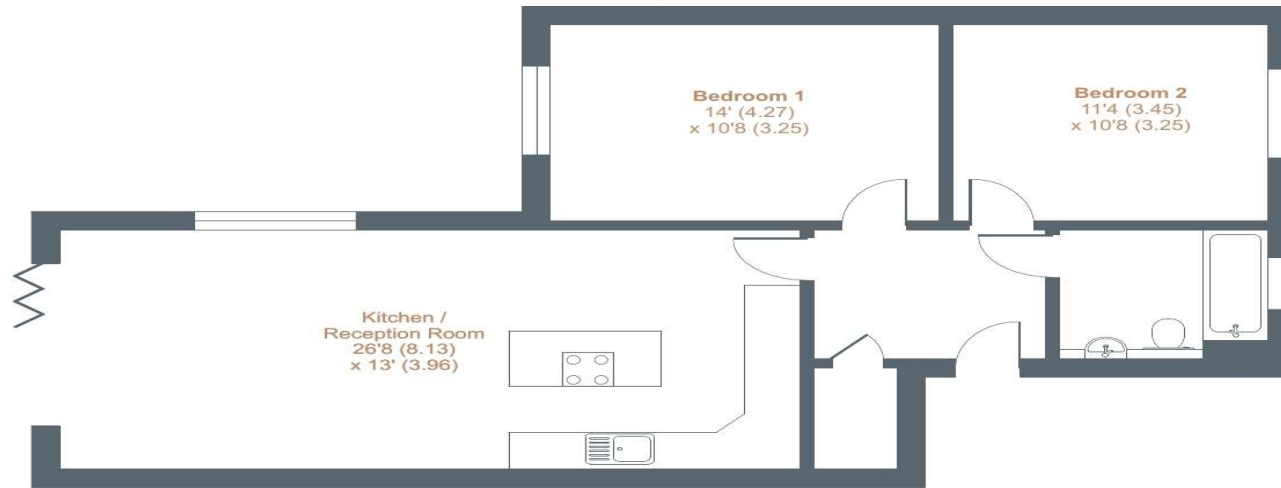




Tekels Park, Camberley, GU15

Approximate External Area = 913 sq ft / 84.8 sq m

For identification only - Not to scale



GROUND FLOOR

CONTACT INFORMATION:

Surrey: 01276 949789

Berkshire: 01344 513789

Hampshire: 01252 213789

info@kiercharles.co.uk



Floor plan produced in accordance with RICS Property Measurement Standards incorporating International Property Measurement Standards (IPMS2 Residential). © n̄che.com 2022. Produced for Kier Charles Property Services Limited. REF: 942981

KIER CHARLES
PROPERTY SERVICES

Kier Charles Limited give notice to anyone reading these particulars that: i) the particulars do not constitute part of an offer or contract; ii) this is protected by the laws of copyright. The owner of the copyright is Kier Charles Limited; This property sheet forms part of our database, and is protected by the database rights and copyrights laws. No unauthorised copying or distribution without permission; iii) the particulars including text, photographs and plans are for the guidance only of prospective purchasers and must not be relied upon as statements of fact; v) nothing in these particulars shall be deemed a statement that the property is in good condition or otherwise nor that any services or facilities are in good working order; vi) all measurements are approximate. Registered office Stanhope Gate, Surrey GU15 3DW
Reg number 12626727

KIER CHARLES

SURREY • BERKSHIRE • HANTS