



ST CATHERINES WOOD, GU15

KIER CHARLES

SURREY • BERKSHIRE • HANTS

ST CATHERINES WOOD, GU15

VIEW WITH KIER CHARLES SURREY.

A spacious and stylish two double bedroom apartment.

This property is on the second floor and benefits from a good size living/dining room, separate kitchen, ensuite to master bedroom, a further double bedroom and family bathroom.

Positioned behind electric security gates and having allocated parking plus visitor spaces.

There are communal grounds and you are only a short walk to Camberley town centre and close proximity to major road, rail links to London.

To fully appreciate the space, location and condition of this property a personal tour with Kier Charles would be highly recommended.

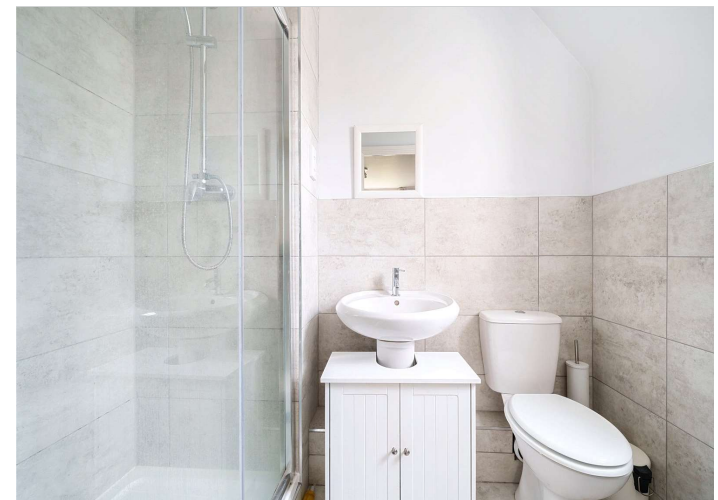
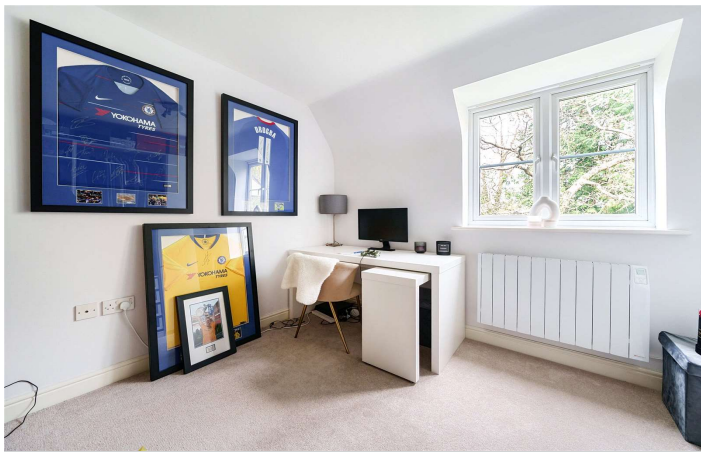


- **SOUGHT AFTER GATED DEVELOPMENT**
- **TWO DOUBLE BEDROOMS**
- **TWO BATHROOMS**
- **ALLOCATED PARKING**
- **SPACIOUS LIVING/DINING ROOM**
- **COMMUNAL GROUNDS**
- **NO CHAIN COMPLICATIONS**

PROPERTY INFORMATION

Postcode | **GU15 2NF**
Tenure | **Leasehold**
Price | **£285,000**
Viewing | **By appointment with Kier Charles**

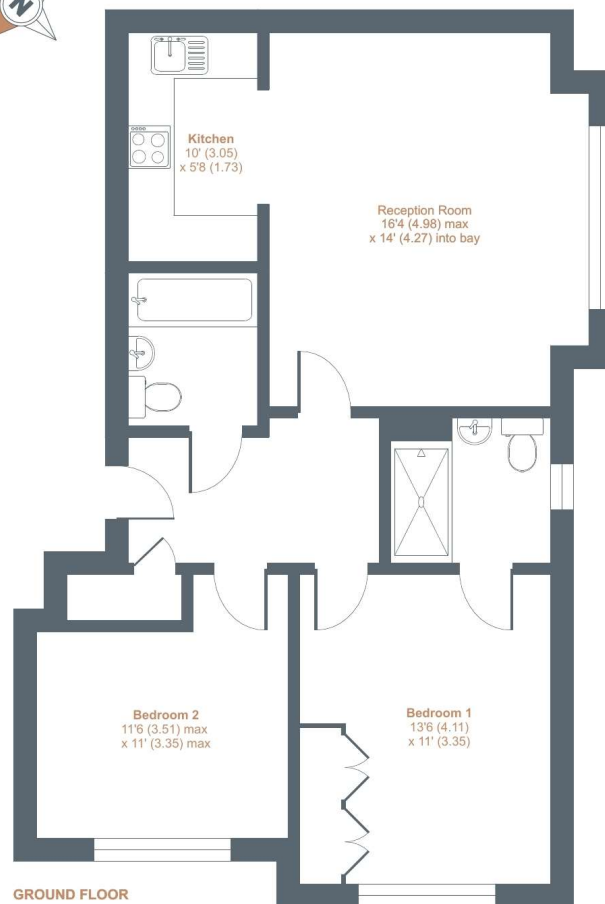




St. Catherines Wood, Camberley, GU15

Approximate External Area = 733 sq ft / 68 sq m

For identification only - Not to scale



Floor plan produced in accordance with RICS Property Measurement Standards incorporating International Property Measurement Standards (IPMS2 Residential). © richcom 2022. Produced for Kier Charles Property Services Limited. REF: 973708

KIER CHARLES
PROPERTY SERVICES

CONTACT INFORMATION:

Surrey: 01276 949789

Berkshire: 01344 513789

Hampshire: 01252 213789

info@kiercharles.co.uk

KIER CHARLES

SURREY • BERKSHIRE • HANTS